

New England Carnival Glass Association

New England
Carnival Glass
Association

40th Anniversary
1975-2015

www.NECGA.com



President
Don Dorais
150 Highland Avenue
Cumberland, RI 02864
(401) 724-4874
ksd24ddd24@cox.net

Vice President
Steve Lindquist
671 Ridge Road
Wethersfield, CT 06109
(860) 257-1816
stevenandgary@cox.net

Treasurer
Gary Sullivan

**Secretary/Recording
Secretary/Bulletin Editor**
Kristine Dorais

Board of Directors
Norm Spicher Harold March
Anna Ketola Bob Preseau
Joanne Andrews

Webmaster: Steve Lindquist

Vol. 35, No. 3 *CARNIVAL GLASS FOREVER* *JUNE 2016*

Meeting Highlights...Look Inside For More!

***SUNDAY,
JUNE 12th
12 Noon***



Millersburg Primrose Bowl in Amethyst
Northwood's Sapphire Stippled Grape & Cable
Variant Bowl



**JUNE MEETING IN
SOUTHBRIDGE, MA**

Show & Tell Theme
VANITY ITEMS (powder jars, dresser
sets, hatpin holders) **& NEW FINDS**

The President's Newsletter

Kris and I just returned from a 3,000 mile trip to the Smokey Mountains of Tennessee. We stopped in Grantville, PA for the Keystone Convention and previewed the glass. Jim Wroda was the auctioneer and they had a nice crowd. We said hi to our friends (they didn't want us to leave) and nine hours later arrived at our resort in Gatlinburg. We saw lots of carnival glass, but everything was marked with the correct pattern and color and in most cases, the actual cost was at least doubled. However, we did come home with a few pieces. We will be bringing them to the June meeting.

The Spring Fling was a fun time for all and we had a nice crowd...even some new faces. Chase attended for the first time and brought his new addition to his collection...check out his article.

Bob Smith is back! He was looking through some old articles that he had written and some of them hadn't been included in the NECGA bulletins, so he forwarded a few articles for us to use. To date, he has 1504 tumblers including ads and souvenirs tumblers, contemporary, vintage, enameled and newer tumblers. All I can say is WOW!

Dr. Larry Keig, who has been kind enough to let us publish his articles from The Carnival Pump, featured Bob Preseau's beautiful Smooth Rays Bowl. Read all about it!

Jocelyne looks sad but she is pretty attached to her new baby. As promised, she brought it to the meeting and this Rose Column Vase is just beautiful.



As you can see, we had a nice crowd Saturday night at the restaurant. Norm helped us out with the reservations. Unfortunately, he and Margie were unable to attend.

Convention is approaching and I think we are in very good shape. Here is a brief introduction to

Our 2016 Convention Guest Speaker...on Stretch Glass

Cal Hackeman was born in rural New Hampshire and grew up in a home with glass and other collectibles. When he was 12 years old one of his



grandmothers gave him an EAPG rose bowl as a thank you for helping clean the glass and china in her cupboards. That bowl turned out to be "Gala" aka "Hawaiian Lei" EAPG by JB Higbee of Bridgeville, PA. Over the next 50 years, Cal would acquire additional examples of EAPG and expand his interests to include Depression glass, furniture, Early American Flint glass, Iridescent stretch glass, carnival glass, cut glass and other collectibles and antiques, including various 'heirlooms' from grandparents and great grandparents. His interest in iridescent glass began in the mid-1980s and continues today resulting in a substantial collection of stretch glass as well as several examples of carnival glass.

Cal is a certified public accountant, a retired partner of Grant Thornton LLP, and currently serves as a corporate Director for two employee-owned companies as well as several not-for-profit organizations. He has served on the Stretch Glass Society Board of Directors for more than 20 years in various positions, including nearly 10 years as President during which the Society celebrated its 40th anniversary and is currently celebrating the 100th anniversary of stretch glass with a nationwide, year-long celebration.

Cal has two sons, one grandson and resides in Wake Forest, NC, with his partner, Jeff Hodges.

So, come on down in September and meet Cal. Hope to see everyone at the June meeting.

Sincerely, President Don

Notes from the Sunday, April 17th meeting.

Present at the meeting: Kris & Don, Gary & Steve, Bruce & Anna, Vickie & John Rowe, Lynne & Harold, Robin & Emile, Brian & Jocelyn, Dave & Sue Noyes, Bob Preseau, (those attending Saturday night: Christina, Joanne, Chase). Show & Tell took place at 10:10 a.m. and the meeting started at 11:25 a.m.

A motion to accept the bulletin minutes...All were in favor. A motion to accept the treasury report...all were in favor.

2016 Convention:

- President Don reported that the deposits were sent in for the 2016 and 2017 conventions. Both contracts were signed and returned back to the hotel.
- The room night cost for 2016 is \$98 per night; 2017 is \$99 per night. Meals are \$32.00 per person.
- Vickie Rowe made an offer to Cal Hackerman who is the Stretch Glass President and asked him to be our banquet speaker. It is the 100th anniversary for the stretch glass society. He accepted. Vickie will get a short bio so we can give a bit of background information to all.
- Once again, Gary Sullivan and Steve Lindquist will do a seminar on Imperial Glass.
- At the last meeting, we talked about subsidizing a breakfast, meal, etc. for the convention and suggested that we vote on it at the Spring Fling. A vote was taken and it was decided that a banquet meal would be reimbursed \$7.00 if a club member paid by August 14th. So the \$32.00 meal would now cost \$25.00 if paid by the deadline.

New Business:

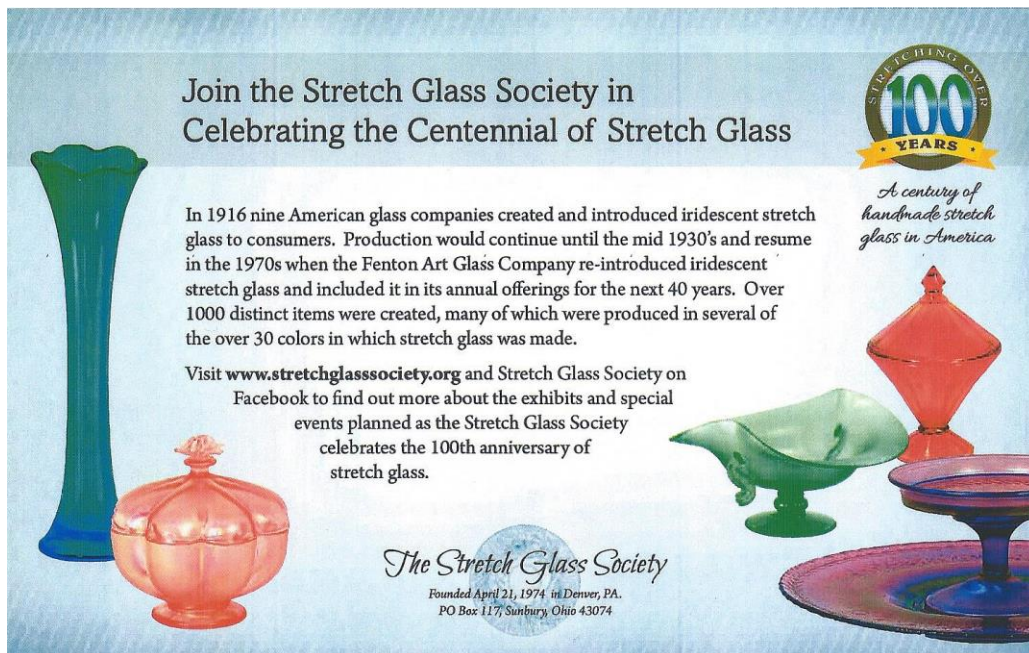
- Gary wrote up a contract for future guest speakers outlining what they receive from the club.
- Gary & Steve purchased 3 boxed lots from Tom's auctions for the card game prizes. It was voted on at the meeting to reimburse them. The cost was \$30.
- After the meal Saturday night, the consensus was to try another restaurant next year. More to come. We also discussed next year's Spring Fling dates and Robin is going to try to book the April 23rd weekend (if the rate is the same).

Meeting adjourned.

Theme: Vanity Items and New Finds

Next Meeting: Sunday, June 12th at noon.

Meal: Sandwiches & cold salads



Join the Stretch Glass Society in
Celebrating the Centennial of Stretch Glass

In 1916 nine American glass companies created and introduced iridescent stretch glass to consumers. Production would continue until the mid 1930's and resume in the 1970s when the Fenton Art Glass Company re-introduced iridescent stretch glass and included it in its annual offerings for the next 40 years. Over 1000 distinct items were created, many of which were produced in several of the over 30 colors in which stretch glass was made.

Visit www.stretchglassociety.org and Stretch Glass Society on Facebook to find out more about the exhibits and special events planned as the Stretch Glass Society celebrates the 100th anniversary of stretch glass.

*A century of
handmade stretch
glass in America*

The Stretch Glass Society
Founded April 21, 1974 in Denver, PA.
PO Box 117, Sunbury, Ohio 43074

The advertisement features several pieces of iridescent stretch glass, including a tall blue vase, a red glass bowl, a green glass lamp, and a red glass vase. A circular logo in the top right corner reads "STRETCHING OVER 100 YEARS".

NECGA Member

Carl & Eunice Booker, Griffith, IN
Robert & Kathy Shoemaker, Alburtis, PA
Welcome Aboard!

ICE GREEN & SQUATTY VASES



Northwood's Fruits
& Flowers Bon Bon
in Ice Green

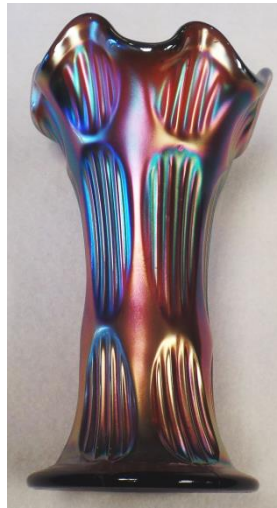
Fenton's April
Showers Vase in
Blue



Imperial
Smooth Panels
vase-smoke on
milkglass.

Fenton's Long
Thumbprint
Vase

Ice green
Peacock at the
Urn with bee
ice cream bowl



Northwood
Tree Trunk
vases in
marigold
and in blue



Northwood's Diamond
Point Vase in Ice
Green



Imperial's
Thumbprint
& Ovals in
Purple

Target Vase
in Purple



*Scenes
from the
2016
Spring
Fling!*

Jocelyne & Kris

*Jocelyne's prize possession...her Rose Column Vase
along with Brian's new acquisitions! I believe an article
is soon to happen!*

Bob Preseau did an informative talk on squatty vases!



Jocelyne, Steve, Sue in a group hug with Dave



Christina



Anna & Jocelyne



Chase, Lynne and Sue



*The
gang's
all here!
We had
a nice
turnout!*

NECGA Treasury Report For the period January 1, 2016 thru Mar 31, 2016		NECGA Convention Report 2016	
Opening Balance - January 1, 2016	\$7,255.16		
Revenues:		Convention Revenue:	
Dues	126.00	Banquet Meals	0.00
Fees	150.00	Mini Auction	0.00
Convention	(600.00)	Card Game/Barrel Raffle	0.00
Other	0.00	Tom Burns - Auction	0.00
Total Revenue	(324.00)	Total Convention Revenue	0.00
Expenses:		Convention Expenses:	
Postage	35.50	Hotel Costs/Meals	600.00
Ink/Paper	0.00	Guest Speaker Fee	0.00
Meeting supplies	4.45	Pizza Party Thus Night	0.00
Web site	0.00	Auction Dinner Sat Night	0.00
Hall Rental	270.00	Hospitality Room	0.00
PayPal Fees	0.00	Display Awards	0.00
Rack Cards	0.00	Banquet Favors	0.00
Other	0.00	40th Anniversary Cake	0.00
Total Expense	309.95	Total Convention Expenses:	600.00
Increase /(Decrease) in Fund Balance	(633.95)		
Ending Fund Balance - Mar 31, 2016	\$6,621.21	Net Convention Profit / (Loss)	(\$600.00)
2017 Convention Deposit	\$600.00		
Cash Balance	\$6,021.21		

New England Carnival Glass Association Membership Application

Dues: \$ 18.00 per year per household. (Membership renewal is due on your anniversary date)

Name _____
Address _____
City _____ State _____ Zip Code _____
Telephone # _____ - _____ Email address: _____

Send application form and dues (U.S. funds) to: Gary Sullivan, 671 Ridge Road, Wethersfield, CT 06109

Membership includes, bi-monthly meetings, bulletins and all functions and outings. If you would like the bulletin emailed to you (vs. mail), please let us know on this form.

Make checks payable to N.E.C.G.A.

Email _____ Mail _____

To pay with Paypal:

Paypal payments are accepted from anywhere in the world, but the cost is \$18 and must be in United States dollars. To pay with Paypal, go to the Paypal website and send \$18 payment to newenglandcarnivalglass@gmail.com. You must include all of your contact information, including name, mailing address and email address with your payment (in the memo section is fine).

www.CarnivalGlass.com

44 YEARS OF SATISFIED MAIL-ORDER CUSTOMERS
UPDATES EVERY TWO WEEKS—CARNIVAL GLASS IN MINT CONDITION

Lloyd R. Ward
P.O. Box 1006, Mayfield, KY 42066
Tel: (270) 251-2005 • Cell: (270) 970-0599
E-Mail: lrward@carnivalglass.com

**Thinking of Selling Your Collection?
Turn Your Carnival Glass into Cash!**

I buy one piece, 20 pieces, or a collection of Carnival

Visit www.CarnivalGlass.com-
THE Place for Carnival Glass!



New England Carnival Glass Association Convention 2016 - September 8-10 Doubletree by Hilton-Leominster, Mass.

Call for Reservations 1-978-534-9000

Call for discounted room rate of \$98 plus tax per night before Aug. 8th

Register under New England Carnival Glass Association

Banquet Dinner: Fri., Sept. 9

Auction: Sat., Sept. 10

Convention Schedule

Thursday night ... Pizza Party 6:00 p.m.

Friday... Seminar #1: 2:00-3:00 p.m...bring your piece of glass to
Stump Tom Burns

Banquet 6:00 p.m.

Guest Speakers: **Cal Hackeman on Stretch Glass**

Followed by Mini Auction

Saturday... Seminar #2: 11:15 a.m.-Noon...**Gary Sullivan & Steve
Lindquist...Imperial Glass!**

Auction Preview: 1:30 p.m. to 3:00 p.m.

Tom Burns Auction begins 3:00 p.m.

Call Don
Dorais
with
questions
401-
724-4874

Visit Brimfield...the largest Outdoor

Antiques event in New England from Sept. 8-13

6,000 dealers on hand – 60 minutes from hotel

AUCTION TEASERS: PICTURES OF THE GLASS WILL BE PLACED ON THE WEBSITE. KEEP CHECKING.... www.necga.com

The banquet buffet meal is \$32 a person. Plated meal: Chicken **OR** Beef (similar to last year). Please let Gary know your choice.

Send your payment by August 14th to: Gary Sullivan, 671 Ridge Road, Wethersfield, CT 06109. **If you pay by August 14th, the club will subsidize your banquet meal, so the cost would be \$25.00 per person.**

BRITT TUMBLER

by Bob Smith



© S & G Thistlewood

It is quite appropriate that the Britt tumbler should be featured now as it's been several years since his passing. John Britt was noted for his carnival research and articles and although the tumbler was found some time before his passing, he was not aware of it.

The tumbler was originally found in England back in 1984 by Ray Notley, who was a noted Carnival Glass writer. He named it the Britt tumbler in honor of John and Lucille Britt. At that time it was the only two known and the other was in the Whitley collection. Several more have shown up since that time.

The tumbler is slightly smaller than regular tumblers being 3 1/4" high. It measures 2 1/2" across the rim and 2" across the base. On the bottom is a twenty ray star design. The color is a cobalt blue, but the iridescence is such that it

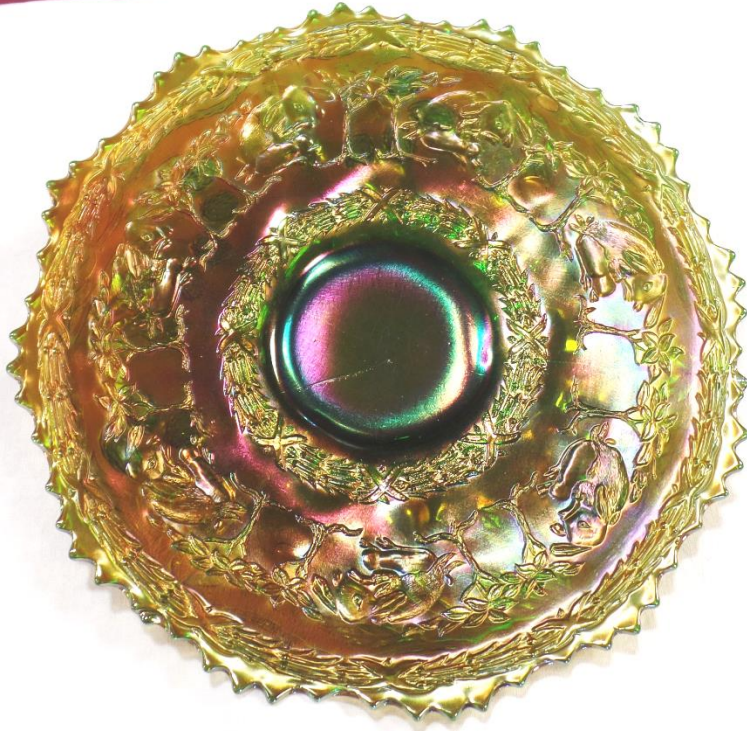
gives the top half of the tumbler a smokey type luster.

There is a plain band around the top beneath which is the main design – four circles spaced evenly around the tumbler, which in turn has two elongated circles surrounding each one. There is a fan-like design between each circle. Inside each circle is a square like design which has geometric squares and petal shapes both within and surrounding it.

We now know that the tumbler was made by Karhula Glass, a Finnish company. The tumbler can be found in their 1938 catalog listed as #4041. Karhula is one of three companies known to have made carnival glass in Finland. The other two being Litala and Riihimaki. This pretty little tumbler is a fitting tribute to John and Lucille Britt.

HAPPY HUNTING!

PETER RABBIT by Chase Marquis



(this is Chase's first article, and hopefully many more to come)

I've been collecting for about six years now and decided to join NECGA last summer. Still being new, I didn't know what to expect, but I'm glad I did. I have started a nice small collection with some killer pieces! But my newest piece that was just added from my wish list, is an awesome Fenton Peter Rabbit plate in green. Yes! One plate that I thought would take me a long time before I ever thought of owning it. It was purchased from a Seeck Auction last summer.

Fenton's Peter Rabbit patterns are known in plates, ruffled and ice cream shapes. Colors include blue, green and marigold with plates being on everyone's wish list. Rarely seen, all shapes are scarce. Most of the bowls and plates have been found in England and many think that they were produced for them and then brought back to the states.

Of course, when I saw the listing on the preview I thought, "man, what a nice plate. I'd love to have that and cross it off my "purchase bucket list." I couldn't attend the auction but I knew somebody that was going, so I asked if they could buy it, and pay on a layaway payment, which they agreed. I had to work the weekend and couldn't wait for the email saying that I won it...which I did. It just made my day. I made the final payment and it was shipped and I got it on April 11 just in time to show it at the Spring Fling in Wells, Maine.

It shows that you never know what's meant to be. Just wait and you'll get what you want. Because this is now my front and center piece and will continue to be for a long time. I hope to complete my wish over the many years, when I get together with everyone and share stories and finds. Now off to find my next killer piece!

ANNOUNCEMENT OF MARRIAGE



By Bob Preseau
and
Clint and Joanne
Andrews

Now that we've got your attention! Upon Bob arriving in Maine to stay with the Andrews for the annual Spring Fling, we do our usual little “show & tell” on Friday night. Bob showed a recent find that he had acquired and had packed for the Sunday club “show & tell”. In the Andrews tub of glass was a pair of candlesticks recently found by them in northern Maine; low and behold both pieces of stretch were of the same maker and in a very scarce color made by Northwood.

Northwood's stretch low cupped centerpiece bowl in Ivory Custard is a very scarce color and both the bowl and candlesticks are shown in [American Iridescent Stretch Glass by John Madeley and Dave Shelter](#). The low flared bowl is cupped in and the pattern is shown on Plate 510 and noted as Northwood's #638. It has 27 ribs, and measures 8 3/8” wide, stands 2” high with a 3 1/2” collar base.

The candlesticks are shown on plate 600 and are noted as Northwood's #657, they are six sides with a single ring under the cup, they measure 8 1/2” high with a 4 3/8” base. The color is very pale yellow and the glass is opaque with nice pastel iridescence. These pieces were not purchased as a set and were found in different states... the bowl ended up in Vermont and the candlesticks in Maine.

The candlesticks were at the “show and tell” on Sunday, but Bob suggested we **not** show them until this article was written. The announcement was made for everyone to anticipate this article in the June edition...someone said that was intriguing. So, here it is!!!

As usual, the Maine weekend was enjoyed by all and the weather really cooperated. It was quite warm in spite of the Spring Fling being earlier than usual in April.

Dugan's Smooth Rays/Jeweled Heart

by Dr. Larry Keig

That Smooth Rays would find its way on a collector's Top Ten (or Top One Hundred) list of choice patterns is unthinkable. Dugan's has an edge over other companies' similarly named designs because its Jeweled Heart exterior is among carnival's most elegant secondaries. Besides, the color of Dugan's can be stunning and the shapes beguiling.

The interior of large Dugan Smooth Rays bowls is made up of 30 highly embossed concave ribs. The rays cover the entire surface except for an unpatterned area directly above and within the confines of the collar base. There are 28 to 30 rays on the upper surface of small bowls, plates, and baskets. All large bowls have a 38-rayed star pressed into the underside of the base. Small bowls have either a 24-rayed star carved into the bottom of the base or a plain base. All plates appear to have unpatterned bases. The outer edge is serrated.

The ornately cast Jeweled Heart back is also found on the reverse of Dugan's collar-base Cherries, Farmyard, Petal and Fan, and once in a while collar-base Ski Star. Its key features are: (a) highly embossed outlines of eight hearts, (b) "jewels" that dangle like glittering pendants from the points at which the ventricles converge and rise like tied down, helium inflated balloons from the tucks at the base of the hearts, and (c) tiny beads which follow the interior contour of the hearts and jewels. Jeweled Heart is used as a primary pattern on water sets in marigold as well as a back pattern.

Smooth Rays are also a prominent element of other Dugan primary patterns: Caroline, where it is the only element on the top surface, and on Stippled Flower, where it appears on the interior along with the center blossom. A different pattern, sometimes called Sharp Rays, is found on the face of Single Flower Framed items.

Based on the reported colors and the other patterns on which its secondary is found, Smooth Rays/Jeweled Heart

is likely exclusively Dugan. There is no indication it was made after the firm was restructured as the Diamond Glass Company in July 1913.

Westmoreland, Fenton, and Northwood also produced Smooth Rays designs. Dave Doty describes these patterns in his Field Guide and at his website. It is possible Diamond or other firms made the even simpler rayed patterns.

Conventional Shapes

The most available shapes are six- and eight-ruffled bowls and small plates with tightly-crimped edge. Ruffled bowls are available in large and small sizes, crimped plates only in a small size. Small tightly-crimped bowls are also available, but seen less frequently.

Large ruffled bowls range from ten and one-half to eleven inches in diameter and stand from three to three and five-eighth inches tall. The eight-ruffled are deeper than the six-ruffled. The eight-ruffled are, in my opinion, more pleasing to the eye than the six-ruffled because all the heart medallions are situated within the folds of ruffles and because the depth makes visible the hearts and jewels.

The reported colors are peach opalescent and amethyst, the former seen more often. The surface color of the peach opal ranges from an anemic apricot or pale peach to a radiant Sunkist orange. The base color of the amethyst runs from a transparent, almost lavender shade to a deep purple plum. More often than not, the Jeweled Heart secondary is unridized. The amethyst and purple with electric or multicolor iridescence are without question the most sought.

Illustrated is a spectacularly iridized and exquisitely shaped large eight-ruffled bowl in purple from the collection of Bob Preseau of Orwell, Vermont. It measures ten and one-half inches in top diameter. It stands three and



Photo courtesy of Bob Preseau.

one-half inches at its tallest point, two and one-fourth inches at the fold. Bob is a forty-plus-year carnival collector who specializes in Imperial and other firms' purple and is a long-time NECGA member.

The small bowls are, like the large, found six- and eight-ruffled. Their top diameters range from six to six and one-half inches, and they stand from one and one-half to just under two inches tall. Peach opal and amethyst are the confirmed colors, the two seen in about equal numbers. I am surprised they have not been reported in marigold and white.



Photo courtesy of Neal Becker.

The top diameter of the pretty small eight-ruffled amethyst bowl pictured is six and three-eighth inches. It stands one and one-half inches tall. It has the star on the underside of the base. Its owners are Neal and Sue Becker from Davenport, Iowa.



Photo courtesy of Kate Lavelle.

Crimped-edge plates measure from six to six and three-fourth inches in top diameter, two and three-fourth inches in base diameter. The flatter they are, the greater their top diameter. The dazzling amethyst pictured, owned by Kate and Bill Lavelle from Illinois, is about as flat as they come. It is six and three-fourth inches in diameter and stands one and three-fourth inches tall at its highest point, one and one-half inches tall "in the valleys."

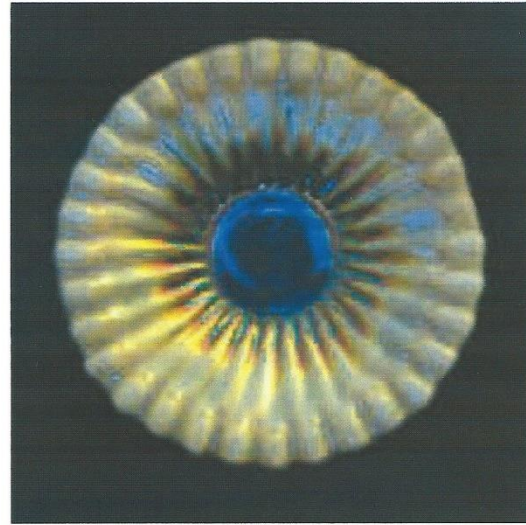


Photo courtesy of Carl Booker.

The nice peach opal shown, from Hoosiers Carl and Eunice Booker's collection, is six and one-half inches in diameter at its zenith, one and one-eighth inches at its nadir. The underside of the base of both plates is plain. Their Jeweled Heart exteriors are, like most, uniridized.

The tailoring of the illustrated crimped-edge peach opal bowl, also from the Becker collection, is noteworthy in that it has one crimp for each of its 30 interior rays, rays and crimps perfectly aligned, indicating just how carefully some Dugan pieces were crafted. The top diameter is six and three-eighth inches, and it stands one and three-fourth inches tall. The underside of the base is plain, not starred.



Above are the front and back view of Neal and Sue Becker's crimped-edge small bowl.

Seldom Seen Shapes

All reported out-of-the-ordinary shapes are peach opal pieces produced from a small mold. All have a star embedded in the bottom of the base. They are alluring shapes that collectors can buy at nominal cost.

Banana-Shape Bowl. Ruffled and tightly-crimped banana-shape dishes, with two opposite sides pulled in, measure from six and one-half to seven inches in length and from three and five-eighth to four inches at the tightest point of the fold. They stand about one and three-fourth inches tall. Most exhibit a dark orange surface color with plenty of opalescence. Banana bowls, while scarce, are not as difficult to find as once believed.

Basket in Metal Frame. A tightly-crimped banana-shape bowl is also available as part of a two-piece basket. In baskets, the bowl is set in a fancy metal frame with arched handle.

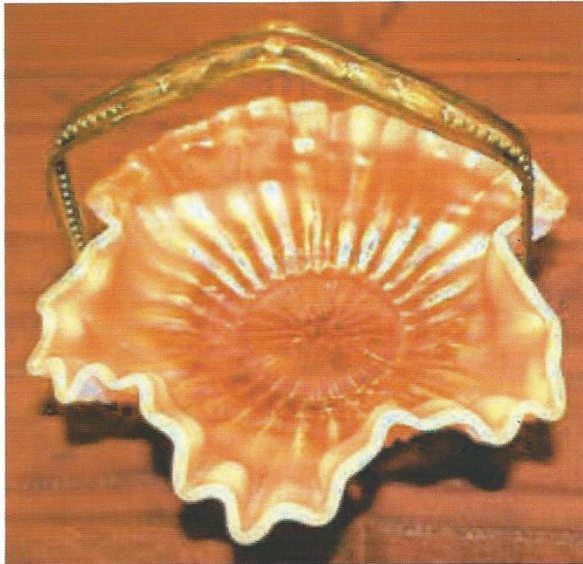


Photo courtesy of Diane Highnam.

The bowl of the illustrated basket measures six and three-fourth inches from end to end and five inches at its waist. The girth of the basket's bowl is greater than that of typical banana bowls, indicating that it was configured to fit snugly in the holder and that not just any banana bowl will do. In frame, the basket stands six inches tall. It sold on an eBay auction a few years back.

Other Dugan bowls set in metal frames—like large collar-base Ski Star, mid-size Daisy Dear, and small

deeply ruffled Fishscale and Beads, and ruffled and tightly-crimped banana-shape Petal and Fan/Jeweled Heart—also occasionally surface. Frames for baskets or condiment containers of this type were outsourced by the firm, not in-house produced. These baskets were marketed in small quantities, probably as novelty or niche items, from roughly late 1910 through 1911.



Basket in the Chamberlain collection.

Basket with Separately Attached Handle. The tightly-crimped (but not ruffled) banana-shape basket with separately attached, clear crystal handle is unique among Dugan's carnival baskets in that the handle is V-shaped rather than rounded or looped. The V-shape handle, however, is known to have been used by Dugan in pre-carnival basket production.

These baskets range from six and one-fourth to seven inches in length and from four and one-fourth to five inches wide where the handle is attached. They range in height from three and three-fourth to four and one-half inches. Their base diameter is two and three-fourth inches. Baskets like this are susceptible to damage where the handle was fused to the bowl.

This basket, while scarce, is more available than once thought, suggesting it was a line item. It is a highly desirable shape but rarely brings much money when sold. That's likely because the surface color and iridescence are hardly ever what can be described as lush. It is intriguing to think about what one in vivid orange would bring.

Tri-Cornered Bowl. The tightly-crimped tri-cornered bowl is an uncommon shape in the pattern but is not a bona fide whimsey because it is anything but an unusual or "strange" shape. The illustrated piece sold at Mickey Reichel's April 2, 2016, auction in Booneville, Missouri. It is six inches from one end to the other and one and seven-eighth to two and one-fourth inches tall, height dependent on where the measurement was taken on the perimeter. It has 30 rays on its top side. Dave Doty has reported that another sold in 2015.

Handgrip Plate. Dave also reported the 2015 sale of a peach opal handgrip plate. Because it brought but \$15, it must have been ugly as a mud fence or made by Westmoreland or another of Dugan's competitors.

I extend thanks to collectors who have provided photos, descriptions, "counts," and other information: Neal Becker, Carl Booker, Barb Chamberlain, April and Kevin Clark, Kate Lavelle, Bob Preseau, and Mickey Reichel. Without their help, an article like this would be difficult, if not impossible, to put together.

Larry.Keig@cfu.net

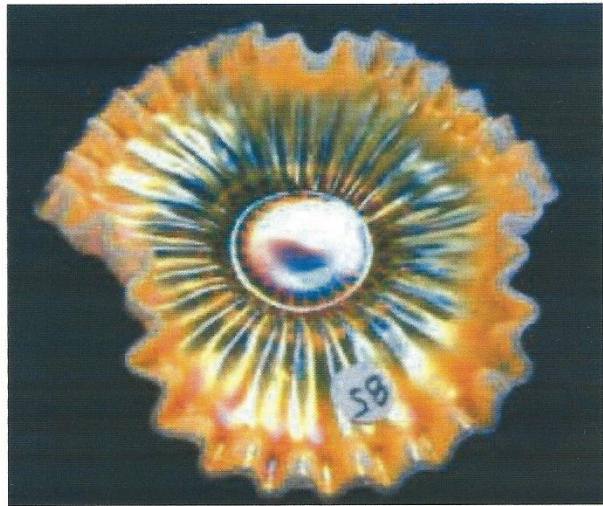


Photo courtesy of Mickey Reichel.

Don't forget the convention deadlines for room rate discounts and our special banquet dinner discount.

American Carnival Glass Convention, June 15-18, 2016, Wroda Auction Center, Greenville, OH. For information, see their website: myacga.com.

ICGA 2016 Convention, July 13-16, 2016, Blue Gate Inn, 800 South Van Buren St., Shippshewana, IN 48565. Reservations: 1-260-768-7688. Seeck Auction. Website: www.internationalcarnivalglass.com.

New England Carnival Glass Association, Sept. 8-10, 2016 at the Doubletree by Hilton, Leominster, Mass. (978) 534-9000. Tom Burns Auction. Contact Don Dorais at (401) 724-4874 or ksd24ddd24@cox.net. Visit our website at www.necga.com.

Air Capital Convention, October 5-7, 2016 at the Best Western Airport Inn, 6815 W. Kellogg, Wichita, KS. Reservations 316-942-5600 or Don Kime 316-733-8424. Banquet speakers Galen and Kathi Johnson

Mid- Atlantic Carnival Glass Club Jamboree, October 20-22, 2016 at the Ramada Plaza Hotel, Hagerstown, MD. Call 301-797-2500 to book your room and secure your rate \$82.00 a night! For information call, Beth Margerum bethmargerum@comcast.net

Great Lakes Convention, October 27 – 29, 2016 at the Ramada Convention Center, Lansing, MI 517-627-3211. For information call Maxine Burkhardt trippingranny@comcast.net or Mark Richter mark.richter@att.net. Website: www.greatlakescgc.com