

The President's Newsletter

While the attendance at our October meeting was small, the December meeting was a record attendance. What a great turnout with lots of good food. Kathy Bradfield even brought a fiber optic Christmas tree for a festive atmosphere. Everyone had a great time! Let's see if we can continue with old and new members attending throughout 2011.

We've elected two board members...one being a longtime member, Louie Carpick and a new member, John Bradfield. Their current term will be for the next two years.

Our Spring Fling plans have been finalized. THE DATE is APRIL 10th. I know many of our members are interested in returning to the picturesque town of Ogunquit for some good seafood and antiquing. I myself can't wait. The meal we had at Mike's last year was delicious. Make sure you look inside for information and the deadline date for hotel reservations.

I know of two members that need prayers and get well wishes. Bob Preseau from VT is recuperating from a heart procedure. Pam Myers is having another operation on her shoulder...let's hope it's a success.

Kris and I attended an auction in Latham, NY. Check out what we brought home and what members were there.

I've been in contact with Bob Smith. I have some exciting news to tell you about...Bob is going to make sure that he attends the September convention this year. He did some Internet bidding on 5 tumblers during the Seeck Auction/Cecil Whitley collection and was successful. These are now 5 tumblers that no one around here has ever seen before and now they are in New England to stay for awhile. He waited 25 years (talk about patience) to bid on them as they were only one or two of a kind. The five cost \$20,000, the very rarest one being the marigold Big Butterfly - the only one known and he purchased it for \$11,500. The other four were of one or two known. He always thought that Cecil had the biggest tumbler collection, but it turned out to be around 750, which included the Vintage, Late and Enameled tumblers. Bob's tumbler count at the moment is: 652 Vintage tumblers, 412 Late tumblers, 150 Enameled Tumblers, 264 Contemporary Tumblers and 42 Souvenirs and Advertising Tumblers. That gives Bob a total 1518 different tumblers. It even surprised him. Bob emailed me with another update...he's up to 1,525. **So come to the Convention in September and see his new finds.**

Wishing everyone a Happy Valentine's Day...let's hope you receive a piece of carnival glass instead of chocolate. In Kris's case, she would like both.

Sincerely, Don Dorais, President



HOPE TO SEE EVERYONE AT THE FEBRUARY 20th MEETING!

*Happy
Valentine's
Day!*

NECGA New Members

**Ralph Doyle, Delmar, NY
Welcome Aboard!**

Notes from the Sun., Dec. 5th meeting.

Present at the meeting: Kris & Don Dorais, Louie & Charlotte Carpick, Gary Sullivan, Steve Lindquist, John & Kathy Bradfield, Norm Spicher, Moe Myers, Henry & Freda, Robin & Emil, Harold & Lynn, John & Vicky Rowe...a terrific turnout and the food was fantastic!

Show & Tell took place and the meeting immediately started afterwards. Meeting began at 1:25 p.m. The bulletin notes were accepted. All were in favor. Robin gave us a treasury report balance which is \$4,227.41. This was accepted by all present.

New Business: necga.com has been renewed for 3 years. The cost was \$31.00. Gary needs to be reimbursed for this. All were in favor. Our hosting expires in July 2013. Necga.com will expire in January 2014. The club also voted on the purchase of a new printer (the current one was purchased in Dec. 2001). Norm made a motion and it was seconded by Emile to spend up to \$250 on a new printer. President Don has done the homework on purchasing a new HP printer.

Club business cards are being passed out to various antiques shops, auction locations, etc. to gain exposure for the club. Currently, it was decided that we don't need to order more.

Board of Directors: Two new members have been elected to the board. They are Louie Carpick and our new member John Bradfield. Congratulations.

2011 Convention: A club meeting will be scheduled during the convention for all members and guests. This will be added to the convention schedule. Donnie received a new contract from the hotel. It is a mirror image of the 2010 contract. It was returned to the hotel and Robin will be sending them a \$600 deposit check. All were in favor. The club will notify www.cga of our convention dates along with Samantha Prince. The convention information will also be put on the necga.com website. A club photographer still needs to be appointed for the convention (pending business).

Spring Fling: Robin is finalizing information on the fling. It will be published in the February bulletin. As stated, the location is Ogunquit, ME at the same hotel we were at last year. There is a very good chance that the Saturday night meal will be at Mike's in Wells (same as last year). The food was good and they accommodated us with no problem.

2011 Meeting Dates: - February 20th, April 10th (Spring Fling), June 12th, August 14th, October 16th and December 4th. Louie will pay the Polish Club for the dates and be reimbursed by Robin. The cost is \$270.

Miscellaneous: John Rowe is in grad school and working on his thesis...which is glass cast iron "molds". If anyone has any documentation, information, books, etc., please let him know (contact information on front page). Howard Suefer may be a good source for John. President Don will work on this.

Meeting adjourned at 2:15 p.m.

Next Meeting: Sunday, February 20th at noon.

Theme: Opal Edged pieces and pieces closest to your heart

Meeting Meal: Soup & Sandwiches

New England Carnival Glass Association Membership Application

Dues: \$ 18.00 per year per household within the U.S. \$ 21.00 per year per household outside the U.S.
(Membership renewal is due on your anniversary date)

Name _____

Address _____

City _____ **State** _____ **Zip Code** _____

Telephone # _____ - _____ **Email address:** _____

Send application form and dues (U.S. funds) to:

Robin Brown
57 Kimball Road
Fitchburg, MA 01420

Membership includes, bi-monthly meetings, bulletins
and all functions and outings. If you would like the bulletin
emailed to you (vs. mail), please let us know on this form.

Make checks payable to N.E.C.G.A.

Email _____ **Mail** _____

SHOW & TELL...

WINTER WHITE

Below Left: Dugan's Lined Lattice Vase
 Right: Dugan's Shell mug and Northwood's Daisy & Drape
 Below Middle: Dugan's Petal & Fan large bowl with smooth edge with the Jeweled Heart Exterior



Above: Dugan' Apple Blossom & Twig Plate
 Below: Northwood's Beaded Cable Rosebowl, Leaf & Beads Rosebowl and Finecut and Roses Rosebowl

Above: Northwood's Hearts & Flowers Ruffled Bowl
 Left: Singing Birds Mug
 Below: Painted Carniva/Stretch Dish with Cover



SPRING FLING
HAMPTON INN & SUITES
900 POST ROAD
WELLS, ME 04090
SAT. APRIL 9 & SUN. APRIL 10

Check-in time- after 2:00p.m. April 9th
MUST RESERVE BY MARCH 20TH
Room Rates- \$ 79- plus tax

Happy Hour- 4:00 p.m. – 5:30 p.m.
(common room will be available for everyone)

Dinner - 6:00 p.m.
Dinner: Most Likely Mike's Clam Shack
(where we ate last year)

Free Sunday Morning Breakfast

Meeting: Show & Tell - 11:00
Regular meeting to follow.

Register under NE Carnival Glass, Call 1-207-646-0555

See You There!!!!

MARY GREGORY TUMBLERS by Bob Smith



If you were to gather together a crowd of people and ask if they knew what Mary Gregory glass was, the chances are that most would say that it's the pretty glass that has the cute scenes and figures enameled upon it. If you asked the same question and substituted Carnival Glass for Mary Gregory, chances are only some of them would answer that it was iridized glass. Not surprising because Mary Gregory glass has been around much longer. Now if you were to gather a group of Carnival Glass collectors and ask if they had ever seen any Carnival Glass made in the Mary Gregory style, few if any, would say they had seen some.

The Mary Gregory story begins in the Boston and Sandwich Glass factory located on Cape Cod. A lady named Mary Gregory did work for the factory from 1880 to 1884 and left long before Mary Gregory glass as we know it today was made. In fact, this type of enameled glass was not named Mary Gregory until the 1920s, and then surprisingly it is said that Westmoreland Glass was the one that named it, but did not make Mary Gregory in Carnival Glass. Mary Gregory type glass was first made in the Bohemia section of Czechoslovakia and in Germany. Several companies made the glass, two prominent ones being the Hahn Factory at Gablonz in Bohemia and Moser glass at Karlsbad. At the time, most of Mary Gregory was blown rather than being pressed. It may surprise you to know that Westmoreland, Fenton and Jeannette made Mary Gregory after WWII, but there is no record or catalog mentioning any of it being iridized.

There are at least three different pairs of Mary Gregory carnival glass tumblers that are known. All three have the familiar Mary Gregory young boy and young girl design as their main enameled feature. Because all these were found as pairs, it raises the question as to whether these were only sold as pairs or are just part of larger water sets. Each of these pairs are very different from each other. So far as I can find out, no Mary Gregory style iridized pitchers have yet been found. That is a shame as they would make wonderful water sets.

The first pair of tumblers are rather unusual because of their sizes. One cannot help notice the difference in size right away – the glass with the young boy is taller than the one with the young girl. These tumblers were obviously meant for beer drinking – the larger difference sort of implies that men can drink more beer than the ladies. I have been told that this is a central European trait. Be that as it may, the one with the boy measures 7

1/4" high with a 3 3/8" rim. The base is 2 1/2" side to side. I believe the height is the largest drinking glass that I have ever come across. The one with the girl measures 6 3/4" high with a 2 7/8" rim. The base is 2 1/2" across. The thin glass looks blown as there are no mold lines visible. This was definitely made in Czechoslovakia as were similar ones mentioned in previous articles. The second pair of tumblers look more like conventional beer glasses. They are shorter in size and the glass is much thicker. Although there are no mold marks visible I do not think it is blown glass. Both tumblers are the same size – 5 5/8" high; 2 3/4" rim and a 2 1/8" base. The top part of the glass with the young boy is not iridized above the three rounded rings over the base. Both of these tumblers have all the characteristics that suggest they were also made in Czechoslovakia.

The last set of glasses are regular size tumblers and both have the same measurements: 3 7/8" high , 2 5/8" rim and a 2 3/8" base. These are definitely tumblers that were made by being blown into molds and are quite thin and light in weight. Most likely they were made before the other two pair of tumblers during an earlier period when Mary Gregory was being blown. These tumblers (in common with all the others mentioned) have the boy and girl with one arm extended and when placed side by side appear to have each child pointing toward the other. This makes for a pleasing display.

Needless to say, these tumblers are quite rare. Every now and then one does show up unexpectedly, even on eBay. For the collector they make a nice contrast with your usual flowered enameled American tumblers.

Happy Hunting!

Feedback – necgabobsm@aol.com



CAPTIVE ROSE BOWL by Moe Myers

This 9" Bowl presents a three-in-one and keyhole edge which distinguishes it from most Fenton Captive Rose Bowls.

The design is a combination of embroidery circles, scales, and diamond stitches which make up the ten roses that encircle the bowl as well as the rose that centers the bowl. The exquisite design is greatly enhanced by the highly iridized colors that makes this bowl stand out from reddish bronze edging to the geometric panels with electric green that emanates from the rose centers and all around the roses as well as the ring of bow ties. The ten electric rustic-red center elements truly directs one's eyes on the central rose which lets the cobalt blue base color eek through the glass adding a dash of another color along with the eight electric green paneling. The back of this bowl is clear but is fully electric blue and presents beautifully on a lighted cabinet shelf.

TRIP TO LATHAM, NEW YORK....by Kris Dorais

Donnie and I traveled up to Latham early Sunday morning a few weeks ago. I had talked to Gary and Steve the night before, so we knew they were showing up and knew we would have fun. Half the fun is the auction; half the fun is who you meet. Got there early and previewed the glass. There were some decent pieces there...probably 2 dozen pieces... I had my eye on a few....

As time went by, I noticed Christina Katsikas from New Hampshire (I hear she's a regular there), Joe Johannets, Ben & Gil, and of course, Steve and Gary. There was a lot of interest in the carnival glass and people were hovering around it. Next thing you know, we're talking to people we've never met before and Gary is networking and passing out NECGA business cards (hopefully, we end up with some new members). Then we end up talking to Ralph Doyle from New York. He tells us he's a new member of the club. We all welcomed him, told him about the spring fling, upcoming convention, etc.

Time marches on and the next thing you know, the auction is beginning. Donnie and I end up winning the bid on a 6 Petals beautiful tri-corner bowl that I absolutely had to have. Gary and Steve knew how badly I wanted it, so they passed on it. A circle scroll vase was the next addition to our collection.

By this time, Steve is downright depressed....nothing to take home YET.

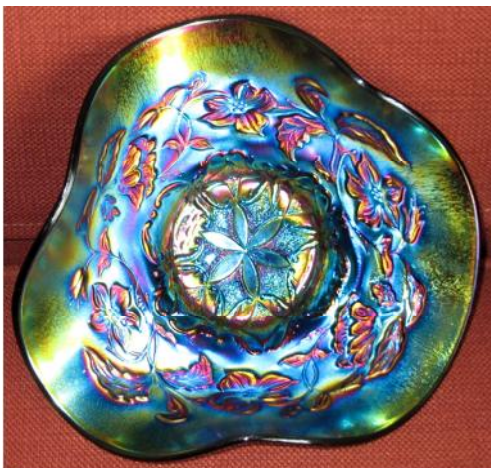
A blue Milady tankard goes by, an embroidered mums in AO goes by, a double stem domed plate in amethyst (Steve really wanted it) goes by...just to name a few.

But be patient...Steve wins a bid, actually three bids. They are taking home a Ragged Robin 3 in 1 edge bowl in Marigold, a squatty Leaf Columns vase in green and a gorgeous Freefold vase.

After a few hours, we're all smiling. Here are some pictures of what we brought home.

We'll probably have them at the February meeting for all to see.

Happy hunting.



FENTON'S GOLD IRIDESCENT CRYSTAL

by Bob Preseau and Joanne Andrews

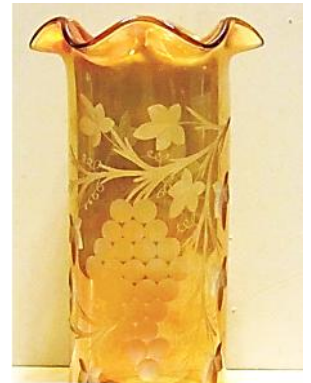
The Fenton Glass Company began their cutting and decorating shop in or around 1912. Plain Crystal Ware was decorated with Floral, Grape, and other wheel cutting designs. Fenton's golden iridescent finish was applied to their engraved glassware around 1914-15 Era. This line continued on into or around 1917 before their stretch glass line appeared and was productive around 1920. This was the beginning time period of their Gold Amber color called Grecian Gold in their stretch glass production. In the minds of many collectors, the two types of glassware are different since the earlier engraved iridized glassware does not have the stretch effect or sometimes referred to the onion peel design or texture. The pieces shown for this article are the earlier Iridized glassware as none have the stretch effect at all. There was a limited production of this type of glassware as there were labor shortages during World War I and after the war the cutting operation never regained momentum and the wheel cutting or engraved process ceased by the 1930's.

The Engraved Grape pieces shown below are prime examples of their Gold Iridescent Crystal. It has not been clear in any publications how many vase sizes that there are. However, it appears that there are not many of these pieces in the Far East. If any other members have any information on these Engraved Grape pieces, please forward this information to Don & Kristine Dorais to be used in a future updated article.



*Vase # 1- Engraved Grape
Mid- Size
10" Tall, 4-5/8" Wide, 3-7/8" Base*

Vase # 1 there are 17 grapes in a cluster with the vines extending around the vase with 12 engraved flowers that have 5 flower petals each. This vase size seems to be plentiful).



*Vase # 2- Engraved Grape
Funeral- Size
11-1/4" Tall, 6" Wide Top, 5" Base*

Vase # 2 there are 26 grapes in a cluster with vines extending around the vase with 16 engraved flowers that have 5 flower petals. NOTE: this funeral vase with its 5" base also has a 6-ruffled top.

Vase # 3 there are 15 grapes in a cluster and 8" tall.

Vase # 4 Not pictured –has been reported in a 6" tall size.

The Tumbler- There are 15 grapes in a cluster with 7 engraved flowers and 5 flower petals.



*Tumbler- 4" Tall, 3-7/8" Wide Top
2-1/4" Base*

*Fenton's Gold Iridized Crystal
1915- 1920*

The Juice Pitcher – there are 8 grapes in two bunches separated by one engraved flower

The engraved grape pattern is available in Juice Sets, Water Sets, Tumblers for each(hard to find as they are very fragile), Tumbler-up, Candy Dish, and Vases.



NOTE; The Fenton's 251 Bud Vases in the Jip Shape. Etched Flower (Corn Flower). I actually have THREE!



1915-1920

NEW ENGLAND CARNIVAL GLASS TREASURY REPORT

11/1/2010	\$4,245.39	
11/8/2010 Deposit	\$18.00	Dues
11/16/2010		Counter Credit \$18
11/24/2010	\$35.98	December bulletin/postage
12/6/2010 CK #127	\$31.00	Website dues
12/27/2010 CK #129	\$253.94	New printer
1/5/2011 CK #128	\$600.00	Deposit for 4 Points Sheraton/Convention
TOTAL PAYMENTS	\$920.92	
TOTAL DEPOSITS	\$18.00	
AVAILABLE BALANCE AS OF 1/18/11	\$3,342.47	

UNBELIEVABLE FIND...by Gary Lickver

Sold at an Antique Show (how I make my living) the end of January. I ended up being offered two fantastic Millersburg 6" amethyst "blackberry wreath" plates for well under \$100 (for the pair). One has slight damage, but with the rarity, I'll take it. Besides the score, I had a great show selling.

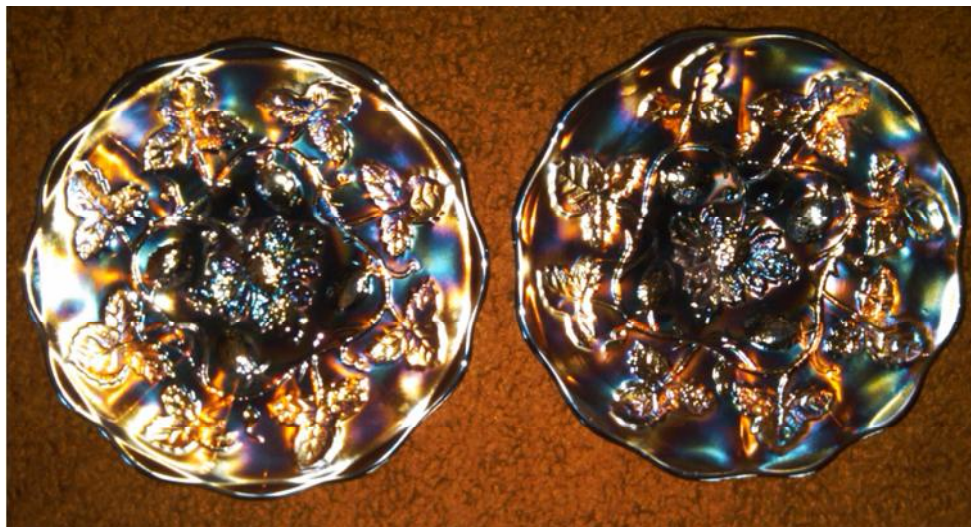
A little about these rare, rare plates...the overall design is similar to the Grape Wreath and Strawberry Wreath patterns, however, the Blackberry Wreath is the only one with a central berry that has three leaves. A rarely seen variant has four leaves attached to the central berry. They also come in green and marigold.

Here are some current prices...

Amethyst, 2,700 (2004), 3,500 (2005), 1,200 (2009)

Green, 2,750 (1996), 2,400 (2001)

Marigold, 1,350 (2006), 2,300, 2,800, 3,750 (all 2007), 2,000 (2008)



From: Tom Mordini

Our 2010 CARNIVAL GLASS AUCTION PRICE REPORT is ready for mailing. If you would like to use PAYPAL, send \$14 (postpaid) for one copy or \$13 each for multiple copies mailed to one address.

Send to my paypal address tommordini@aol.com or you can order by sending your check to Tom Mordini, 36 N. Mernitz Avenue, Freeport, IL 61032 (815) 235-4407

www.CarnivalGlass.com

43 YEARS OF SATISFIED MAIL-ORDER CUSTOMERS

UPDATES EVERY TWO WEEKS--CARNIVAL GLASS IN MINT CONDITION

15% Off Your Total Purchases
During January, February & March, 2011

PLUS Free Shipping and Insurance on Purchases

Now is The TIME To Add Quality Pieces To Your Collection At BIG SAVINGS!

Visit www.CarnivalGlass.com
THE Place for Carnival Glass!



Thinking of Selling Your Collection?
Turn Your Carnival Glass Into Cash!

Contact Lloyd R. Ward

P.O. Box 1006 • Mayfield, KY 42066 • Tel: (270) 251-2005

Cell: (270) 970-0599 • Email: lward@carnivalglass.com

2011 NECGA MEETING DATES

January-11						
S	M	T	W	TH	F	S
						1
2	3	4	5	6	7	8
9	10	11	12	13	14	15
16	17	18	19	20	21	22
23	24	25	26	27	27	28
30	31					

February-11						
S	M	T	W	TH	F	S
		1	2	3	4	5
6	7	8	9	10	11	12
13	14	15	16	17	18	19
20	21	22	23	24	25	26
27	28					

March-11						
S	M	T	W	TH	F	S
		1	2	3	4	5
6	7	8	9	10	11	12
13	14	15	16	17	18	19
20	21	22	23	24	25	26
27	28	29	30	31		

April-11						
S	M	T	W	TH	F	S
						1
2	3	4	5	6	7	8
9	10	11	12	13	14	15
16	17	18	19	20	21	22
23	24	25	26	27	28	29
30						

May-11						
S	M	T	W	TH	F	S
1	2	3	4	5	6	7
8	9	10	11	12	13	14
15	16	17	18	19	20	21
22	23	24	25	26	27	28
29	30	31				

June-11						
S	M	T	W	TH	F	S
			1	2	3	4
5	6	7	8	9	10	11
12	13	14	15	16	17	18
19	20	21	22	23	24	25
26	27	28	29	30		

Spring Fling - Ogunquit, ME

July-11						
S	M	T	W	TH	F	S
						1
2	3	4	5	6	7	8
9	10	11	12	13	14	15
16	17	18	19	20	21	22
23	24	25	26	27	28	29
30	31					

August-11						
S	M	T	W	TH	F	S
	1	2	3	4	5	6
7	8	9	10	11	12	13
14	15	16	17	18	19	20
21	22	23	24	25	26	27
28	29	30	31			

September-11						
S	M	T	W	TH	F	S
				1	2	3
4	5	6	7	8	9	10
11	12	13	14	15	16	17
18	19	20	21	22	23	24
25	26	27	28	29	30	

NECGA Convention,
Leominster, Mass

October-11						
S	M	T	W	TH	F	S
						1
2	3	4	5	6	7	8
9	10	11	12	13	14	15
16	17	18	19	20	21	22
23	24	25	26	27	27	28
30	31					

November-11						
S	M	T	W	TH	F	S
		1	2	3	4	5
6	7	8	9	10	11	12
13	14	15	16	17	18	19
20	21	22	23	24	25	26
27	28	29	30			

December-11						
S	M	T	W	TH	F	S
				1	2	3
4	5	6	7	8	9	10
11	12	13	14	15	16	17
18	19	20	21	22	23	24
25	26	27	28	29	30	31