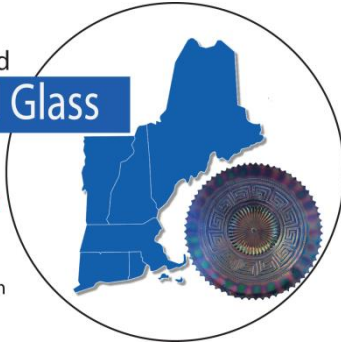


New England Carnival Glass Association

New England
Carnival Glass
Association

40th Anniversary
1975-2015

www.NECGA.com



President

Don Dorais
150 Highland Avenue
Cumberland, RI 02864
(401) 724-4874
ksd24ddd24@cox.net

Vice President

Steve Lindquist
671 Ridge Road
Wethersfield, CT 06109
(860) 257-1816
stevenandgary@cox.net

Treasurer

Gary Sullivan

**Secretary/Recording
Secretary/Bulletin Editor**
Kristine Dorais

Board of Directors

Norm Spicher Harold March
Anna Ketola Bob Preseau
Joanne Andrews

Webmaster: Steve Lindquist

Vol. 35, No. 1 *CARNIVAL GLASS FOREVER* *FEBRUARY 2016*

Meeting Highlights...Look Inside For More!



**SUNDAY,
FEB. 21st
12 NOON**



Imperial's Hattie Rosebowl in Marigold which is quite scarce
Fenton's Holly Ice Cream Bowl in Blue

**FEBRUARY MEETING IN
SOUTHBRIDGE, MA**

Show & Tell Theme
**ROSEBOWLS
& NEW FINDS**

The President's Newsletter



We've had an easy "winter" so far with little snow...hope it stays that way as we'll be traveling in a couple of weeks to Southbridge for the February meeting. Sometimes it can be tricky with the weather.

Some of our members will be traveling to the Tampa Bay auction...Robin & Emile taking an extended vacation and Gary & Steve. Snowbirds Deb & Greg Benoit, Paul and Yvette Berube and Dave & Sue Noyes are already there in Florida enjoying the nice weather. The auction glass looks great so maybe they'll "show and tell" what they purchased at our Spring Fling. If you remember, Jocelyne has promised to bring her beautiful Rose Column Vase for all to see!!!

So plan on driving to Wells, Maine in April and make your reservations at the Hampton Inn (207) 646-0555 before the cut off date that is March 15th. Room rate is \$89 plus tax (includes breakfast). We all go out to eat on Saturday night and the meeting is Sunday morning. We have a great turnout and get to spend some extra time with our carnival friends.

Sincerely,
President Don

Tampa Bay Carnival Glass Club Convention February 10 – February 13, 2016
The Dolphin Beach Resort, 4900 Gulf Blvd. – St. Pete Beach, FL, 800-237-8916 or 727-360-7011
Tom Burns Auction, <http://www.tbcbgc.com/convention.html>

Texas Carnival Glass Club Convention: March 16-19, 2016
Wyndham Dallas Suites – Park Central, 7800 Alpha Rd, Dallas, TX 75240. Room reservations: 972-233-7600 (option 2). Visit our website for more information: www.texascarnivalglass.com/convention

Heart of America Carnival Glass Convention, April 20 – 24, 2016
Embassy Suites Airport, Kansas City, MO 816-891-7788. Burns Auction: Galen and Kathi Johnson collection. Contact: Bob Grissom – bgrsm31@comcast.net. Visit our website at hoacga.com to register

Keystone Carnival Glass Convention, May 11-14, 2016 at the Holiday Inn, Grantville, PA (717) 469-1554. Wroda Auction. Contact Aaron Hurst at alanhurst6@gmail.com for information.

Lincoln Lands Convention, June 2-4, 2016 at Milwaukee's Best Western Airport. Their website is www.LLCGC.org

New England Carnival Glass Association, Sept. 8-10, 2016 at the Doubletree by Hilton, Leominster, Mass. (978) 534-9000. Tom Burns Auction. Contact Don Dorais at ksd24ddd24@cox.net. Visit our website at www.necga.com.

Mid- Atlantic Carnival Glass Club Jamboree, October 20-22, 2016 at the Ramada Plaza Hotel, Hagerstown, MD. Call 301-797-2500 to book your room and secure your rate \$82.00 a night!



Maurice "Moe" Myers unexpectedly passed away on Dec. 23, 2015. He was 77 years old and a long time member and past president of the New England Carnival Glass Association. Moe was a collector of vases, but I think his favorite was his collection of Dugan glass. He was a mentor and friend to many of our club members. He will be missed.



Notes from the Sunday, Dec. 6th meeting.

Present at the meeting: Kris & Don, Harold & Lynne, Joanne & Clint, Gary & Steve, Ben Perez, Sue & Dave Noyes, Jean Bennett, Vickie & John Rowe, Henry & Freda Simonis, Norm Spicher, Paul Berube, Louie and Charlotte Carpick. After our Pizza and delicious, decadent desserts, Show & Tell took place and the meeting started at 2:00 p.m.

A motion to accept the bulletin minutes...Kris reported that there was an error in the October bulletin. Incorrectly stated in the minutes was that the term for Anna Ketola and Norm Spicher were ending. It should have said that the terms for Robin Brown and Louie Carpick were ending. The correction was so noted. All were in favor. A motion to accept the treasury report...all were in favor.

2016 Convention:

- The club still hasn't sent in the \$600 deposit check. We are still waiting to get the updated contract from the hotel.
- A question was raised to see if the hotel could provide a daily breakfast like they do at the Mid-Atlantic Convention...possibly the club subsidize cost, hotel give a discounted cost, etc. Harold made a motion, Paul seconded it, all were in favor. Donnie will check with the hotel to see what our options are and this will be discussed further.
- Our banquet speaker is not confirmed, but hopefully, we should know by the Feb/April meeting.

New Business:

- The Spring Fling dates are April 16-17. Thanks Robin who spoke with the hotel and confirmed everything.
- A \$270 check was reimbursed to Louie as he paid the Polish Club for the 2016 meeting dates (see enclosed calendar).

Meeting adjourned at 2:35 p.m.
Theme: Rosebowl and New Finds

Next Meeting: Sunday, Feb. 21st at noon.
Meal: Soup & Sandwiches

Something different by Kathi & Galen Johnson

Carnival glass is one of our passions – and we wanted to do something different that would allow people to ‘see’ our upcoming auction glass in a new way. We’ve decided to part with some of our carnival glass at the HOACGA (Heart of America Carnival Glass Association) convention in Kansas City, MO. The auction is on April 23, 2016. We would like to invite you all to come – it’s really all about getting together with friends who enjoy the same hobby.

But to give you a different sort of preview, if you go to www.johnsoncarnival.com, you will be able to see the pieces that will be sold – Tom Burns is the auctioneer, and once his auctionflex is up and available for the auction, you can actually go directly to the piece to put in a bid (if you aren’t able to attend).

When you click on the ‘Auction Lots’ page in our website, you will be taken to a catalog of all of the pieces being sold. When you click on the description, we’ve got multiple pictures of each piece, a magnifier so that you can look at them in detail, and a video allowing you to see the way the light reflects off of the piece as well as the iridescence when the piece turns.

We hope you like it, and if nothing else, you get to enjoy some special carnival glass!

It’s impossible to pick a favorite piece – there are so many, and each one has a memory attached. Galen likes Millersburg, so that’s why we have 14 pieces of blue Millersburg and 7 pieces of Vaseline Millersburg in the sale (as well as the amethyst Pipe Humidor, the 3 Rose Columns vases, 3 Ohio Star vases, 3 Wild Rose lamps (one of which is the rare Ladies Medallion) and much more. Kathi loves Fenton (and plates!) – which is why there are 2 Kittens spittoons, the Goddess of Harvest bowl, the Rustic whimsy jardinière, the green Orange Tree Punch bowl (and the whimsy marigold flared punch bowl), and plates, plates, plates!

Add in some great Northwood, some beautiful Dugan, a little European/South American glass and some amazing Imperial – and you’ve got a very eclectic mix – which is what we collect! We tried to buy great color – and Tom picked the best of our collection. But we tried to have something for everyone, so check it out. We’d love to see you there.

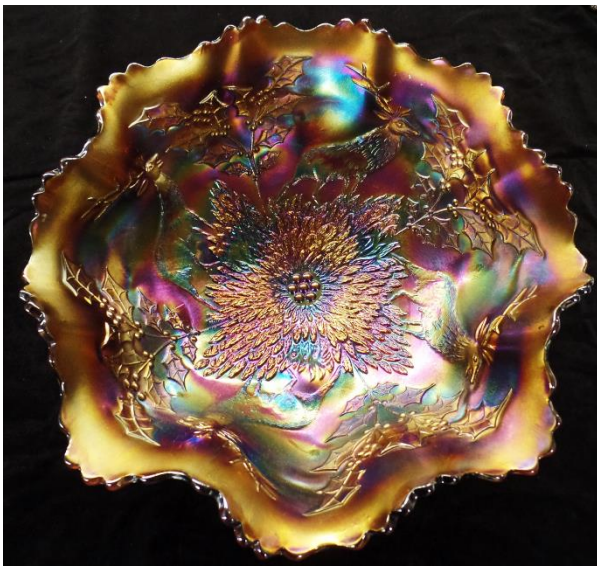
NEW FINDS



Imperial's 6 Sided Candlesticks in Marigold

Northwood's Diamond Point Vase in Blue

Northwood's Grape Arbor Tankard with 4 cups in White



Northwood's Fern Brand along with the Original Box...COOL!



Fenton's Stag & Holly Amethyst Ball Footed Bowl
Northwood's Acorn Burrs Punch set in green
Eda's Floral Sunburst 6" Vase in Blue



SPRING FLING
HAMPTON INN & SUITES
900 POST ROAD
WELLS, ME 04090
SAT. APRIL 16 & SUN. APRIL 17

Check-in time- after 2:00p.m. April 16th
MUST RESERVE BY MARCH 15TH

Room Rates- \$ 89.00 - plus tax

Happy Hour- 4:00 p.m. – 5:30 p.m.
(common room will be available for everyone)

Dinner - 6:00 p.m.
Dinner: Restaurant TBD

Free Sunday Morning Breakfast

Meeting: Show & Tell - 10:00 a.m.
Regular meeting to follow

Register under NE Carnival Glass, Call 1-207-646-0555

See You There!!!!

***Antique Shops Nearby, Marginal Way, Ogunquit, The Ocean
Great Seafood, Good Company!***

NECGA Treasury Report For the period January 1, 2015 thru Dec 31, 2015		NECGA Convention Report 2015	
Opening Balance - January 1, 2015	\$6,893.45		
Revenues:		Convention Revenue:	
Dues	962.00	Banquet Meals	1,020.00
Fees	450.00	Mini Auction	585.00
Convention	474.09	Card Game/Barrel Raffle	410.00
Other	0.00	Tom Burns - Auction	300.00
Total Revenue	1,886.09	Total Convention Revenue	2,315.00
Expenses:		Convention Expenses:	
Postage	175.36	Hotel Costs/Meals	1,230.08
Ink/Paper	256.40	Guest Speaker Fee	100.00
Dec Meeting food	140.39	Pizza Party Thus Night	201.93
Web site	323.64	Auction Dinner Sat Night	94.21
Hall Rental	270.00	Hospitality Room	74.70
PayPal Fees	1.64	Display Awards	50.00
Rack Cards	284.98	Banquet Favors	50.00
Other	71.97	40th Anniversary Cake	39.99
Total Expense	1,524.38	Total Convention Expenses:	1,840.91
Increase /(Decrease) in Fund Balance	361.71		
Ending Fund Balance - Dec 31, 2015	\$7,255.16	Net Convention Profit / (Loss)	\$474.09

Enclosed is the full year 2015 Treasurer's report. You can see that our fund balance increase by \$361.71 to \$7,255.16 in 2015. Even with the expenses of renewing our website, buying Rack Cards and celebrating our 40th anniversary, we still had a nice increase in our fund balance. The only activity so far in 2016 has been to pay our meeting room rental of \$270. Thus our fund balance at January 31, 2016 is \$6,985.16.

Respectfully submitted Your Treasurer, Gary Sullivan

New England Carnival Glass Association Membership Application

Dues: \$ 18.00 per year per household. (Membership renewal is due on your anniversary date)

Name _____
 Address _____
 City _____ State _____ Zip Code _____
 Telephone # _____ - _____ Email address: _____

Send application form and dues (U.S. funds) to: Gary Sullivan, 671 Ridge Road, Wethersfield, CT 06109

Membership includes, bi-monthly meetings, bulletins and all functions and outings. If you would like the bulletin emailed to you (vs. mail), please let us know on this form.

Make checks payable to N.E.C.G.A.

Email _____ Mail _____

To pay with Paypal:

Paypal payments are accepted from anywhere in the world, but the cost is \$18 and must be in United States dollars. To pay with Paypal, go to the Paypal website and send \$18 payment to newenglandcarnivalglass@gmail.com. You must include all of your contact information, including name, mailing address and email address with your payment (in the memo section is fine).

www.CarnivalGlass.com

44 YEARS OF SATISFIED MAIL-ORDER CUSTOMERS
 UPDATES EVERY TWO WEEKS—CARNIVAL GLASS IN MINT CONDITION

Lloyd R. Ward
 P.O. Box 1006, Mayfield, KY 42066
 Tel: (270) 251-2005 • Cell: (270) 970-0599
 E-Mail: lrward@carnivalglass.com

**Thinking of Selling Your Collection?
 Turn Your Carnival Glass into Cash!**

I buy one piece, 20 pieces, or a collection of Carnival

Visit www.CarnivalGlass.com-
 THE Place for Carnival Glass!



Fruit and Flowers 9" Plates question by Gary Sullivan

I sent the below letter to www.cga on December 7th 2015:

On Doty's website there is a listing for Fruit and Flowers 9" Plates (see below). My question is: Has anyone ever seen a Fruit and Flowers 9" plate?

Plates, 9 inch (scarce size)

Green, 95 (2007)

Marigold, 70 (2007), 90 (2009)

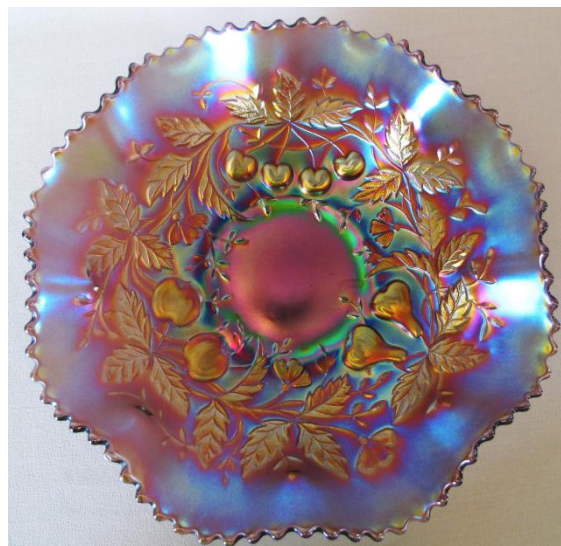


Fruit and Flowers pieces come in several shapes and sizes. Attached are photos showing the 7 to 8 inch pieces which include a plate, a single hand-grip plate, a double hand-grip plate and a ruffled bowl. I believe that all of these came from the same mould but may be differently sized due to the shaping that took place

when the piece was removed from the mould.

There is a variant to these small pieces found in ruffled bowls and plates that is stippled and has three leaves in the center.

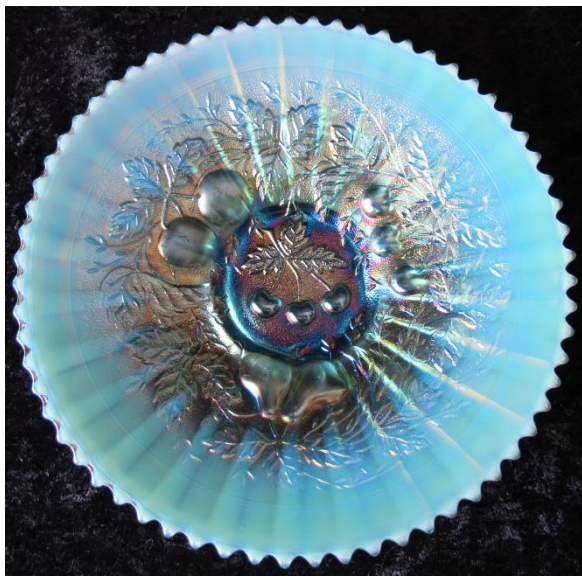
To the right is a Fruit and Flowers Large sized ruffled bowl in what I would call Lavender, but Tom Burns says is Light Amethyst. I still like Tom even though he disagrees with me on occasion. This piece is ten inches across. Nine inch plates could not have come from this mould. This piece could have been part of a berry set that would have included six small individual ruffled



The only other Fruit and Flowers shape is the two-handled stemmed bon-bon that can come stippled or non-stippled.

So, none of the moulds used to make the above pieces could be used to make a nine inch plate. Maybe the listings in Doty's were actually for the Three Fruits plates that were incorrectly listed in an auction brochure as Fruit and Flowers. Fruit and Flowers and Three Fruits can easily be confused as the only real difference is that Three Fruits has three cherries in the center while Fruit and Flowers have no center design (except for the stippled variant with three leaves).

Three Fruits pieces are found in nine inch plates, ruffled bowls and pie crust edge (PCE) bowls. Each of these pieces could be stippled or non-stippled. Attached are two photos of a stippled plate in aqua opal and an non-stippled plate in amethyst.



We have a collection of nine inch plates and I would love to add to it a nine inch Fruit and Flowers plate if one truly exists. Has anyone ever seen one or could one provide a picture of one as proof.

Thanks,
Gary Sullivan

A closing Note: Dave Doty sent us a note that he felt the listing of the 9" plates for Fruit and Flowers was probably a mistake. The plates were probably "Three Fruits". So Dave has taken down the listings for Fruit and Flowers 9" Plates.

Miniature Hobnail by Brockwitz of Germany or Koh-i-nor..... by Greg Dilian

A couple of years ago, I was browsing around eBay looking for some nice Carnival Glass finds when I came across a listing from Argentina. The seller had 3 pieces, listed separately, selling a little 1 ounce marigold cordial, a decanter and stopper, and a tray. All were in the Miniature Hobnail pattern made by Brockwitz of Germany a.k.a. Ko-i-nor. This is a rather rare pattern and not seen too often. After reading the listings, I found out that the tray and decanter had damage but the small cordial was perfect. So, I bought it hoping to find the rest of the set one day. You know how we collectors are.

So, we now fast forward to June of 2015. I was getting about 400 pieces of Carnival ready for Tom Burns to pick up for the Mid-Atlantic Carnival Glass Association Convention in October. I needed the space in my one bedroom apartment for me. I decided I would never find the rest of the Miniature Hobnail set so I was including the cordial (Lot #12). It was a cute little guy measuring 3.5" high. Not that it took up much room but...



It is now October 24th in Hagerstown, Md. People are previewing the glass which got some rather nice reviews. Lot #12 comes up and who wins the little cordial in our story but our own Don and Kris Dorais who were in attendance with several others from NECGA. The auction did well and I was quite happy with the results. I mean a marigold Figural Banana Novelty sold for \$520!



MINIATURE HOBNAIL aka KOH-I-NOOR (Germany)

A familiar pattern based on the simple, regular hobnail design, Brockwitz gave it the catalog #12150. A great many shapes were made in this pattern but only the liqueur set (cordial or decanter set, known in Germany as a *likorsatz*) is reported in Carnival so far. Found in the USA, a liqueur set in this pattern was sold at auction in 1998 for \$800.

Shapes: decanter and stemmed wines on a matching glass tray
Color: marigold

The delightful *MINIATURE HOBNAIL* liqueur or cordial set (pattern #12150) was called *KOH-I-NOOR* by Brockwitz. The catalog illustration notes that it came with either a round or an oval tray.

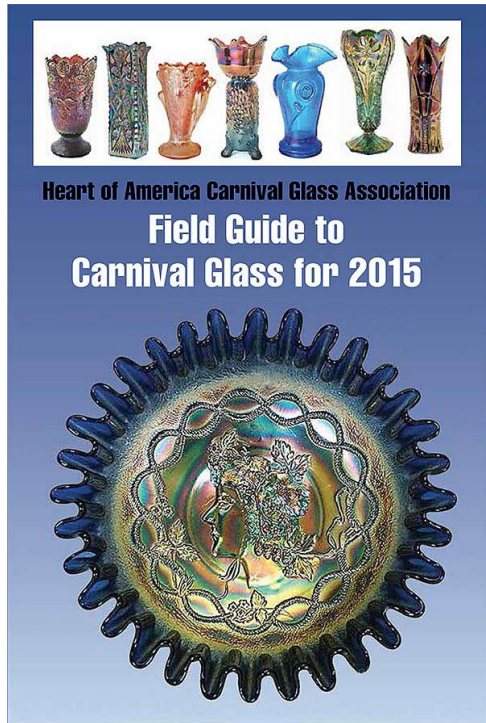
On the way back home to Long Island, I always stop at Renninger's Flea Market and the stores in Adamstown, Pa. In one of the stores I went into, I was walking around and look down on a shelf as my eye caught a glint of iridescent marigold. What do I see??? A Miniature Hobnail cordial set with 3 cordials, the decanter and tray. Do you know how long I looked for that set? But then my thoughts went to Don and Kris. I bought it and called them up as soon as I got home. I figured they might want the set that had eluded me for years. I mean what were the odds of finding another one? They talked about it and asked a few questions about condition and rarity and decided to buy it. So, the next day I shipped it off to Rhode Island.

I will let Kris tell the rest of the story... (from Kris...what more can I say. Greg told it all, but talk about coincidences...and we love the cute set!)

OH! By the way! Last month I was looking at one of Jim Seeck's online auctions (I need to replenish my cabinet shelves that were so bare) and what do I see but Miniature Hobnail cordial set with 4 cordials. So, now I have a set and Don and Kris do too.

See! This story has a nice ending.

The HOACGA Field Guide to Carnival Glass for 2015



HOACGA Field Guide to Carnival Glass		Alphabetical Listings	
<p>Mirrored Lotus rowboats Margarit 200 (07), 300 (08) White 190, 290 (10), 100 (12)</p> <p>Mirrored Diamonds and Pleats Margarit 45 (05), 18 (07) Creamer and open sugar Margarit 45 (05) Batter creamer, open sugar Margarit 145 (10) Bonboniere (covered dish) Margarit, small lid chg, 290 (05), 100 (12) Bowl, ruffled, 8-1/2 inches Margarit 20-30 Salad bowl, 8-inch, dome footed Margarit 75 (12) Fruit bowl, with base Margarit 175 (08), 200 (10) Coral set (decanter, 6 cordials, tray) 1,050 (12) Coral, 3 1/2 inches tall Margarit 200 (10) Decanter with stopper Margarit 91 (6 Bay 05) Decanter, 2 wine glasses Margarit 225 (14) Wine Glass Margarit 70 (02) Glen and Stephen Thirlwood report flared out bowls, straight up bowls, and this traditional shape. This knee blue rowboat (with pinholes) sold at a 2001 auction for \$75. A Margarit example, also 8 inches (and also with pinholes) brought the same price at the same auction. In 2003, a margarit rowboat brought \$25.</p> <p>Moonprint, Brockwitz Moonprint was made in a wide range of shapes, although not all shapes have yet appeared in carnival. The pattern consists of regularly spaced round depressions. At the junction between 4 of these round shapes there is a small 4-pointed star. Wine pitchers Margarit 650 (04), 225 (11) Margarit, pale ind., 300 (10) Batter dishes Margarit, both damaged, 60 (05), 95 (10) Creamers Margarit 50 (01), 40 (12)</p> <p>Opn sugar or creamer Margarit 45 (05), 18 (07) Creamer and open sugar Margarit 45 (05) Batter creamer, open sugar Margarit 145 (10) Bonboniere (covered dish) Margarit, small lid chg, 290 (05), 100 (12) Bowl, ruffled, 8-1/2 inches Margarit 20-30 Salad bowl, 8-inch, dome footed Margarit 75 (12) Fruit bowl, with base Margarit 175 (08), 200 (10) Coral set (decanter, 6 cordials, tray) 1,050 (12) Coral, 3 1/2 inches tall Margarit 200 (10) Decanter with stopper Margarit 91 (6 Bay 05) Decanter, 2 wine glasses Margarit 225 (14) Wine Glass Margarit 70 (02) Candlesticks, 8 1/2 inches Margarit 400 (12), 240 (14) Margarit, single 160 (08) Vases, see Vine wreath</p> <p>Morning Glory, Millersburg An extremely rare pattern known only in pitchers and tumblers. The pitcher is a very tall, tankard style with a morning glory around the middle. About 70 are known in approximately equal quantities of amethyst, green, and margarit. Water tankards Amethyst 38,000 (11), 25,000 (14) Margarit 22,000 (10), 17,000 (14) Tumblers Amethyst 950 (10), 475, 750 (11) Green 1,200 (05) Margarit 850, 1,200 (14) Green 600, 1,000 (14) Margarit 450 (14) Margarit 450 (14)</p> <p>Multi-Fruits and Flowers, Millersburg Millersburg's Multi-Fruits and Flowers is pretty much embodied in the name. The fruits—grapes, apples, and pears—are highlighted. Some collectors shorten the name to Multi-Fruits, but it's the same pattern. Don't confuse it with Dugan's Multi-Fruits, however. This one is so highly sought after and so few pieces exist that with the exception of pinch nups, all examples bring at least 3 figures—many 4 or even 5. Water pitchers Amethyst 11,000 (04), 15,000 (12) Green 11,000 (04) Margarit 14,000 (04) Tumblers Amethyst 1,800 (08), 900 (10) Green 1,800 (07), 1,400 (12) Margarit 1,400 (14), 1,700 (14) Margarit, 1,800 (13) Margarit, slip shape, 3,000 (11), 2,800 (14) Pitcher and bases Amethyst 700 (13), 1,400 (14) Blue, slip shape 22,000 (10) Margarit 750 (08) Pitcher base only Amethyst 175 (03), 300 (08) Blue 1,050 (07) Green 75, 85 (05), 95 (10) Margarit 200 (08), 100 (08) Pitcher cups Amethyst 50 (07), 40 (08), 35 (12) Blue, Star 2,450 (17 07) Green 23 (11) Margarit 35 (08)</p> <p>Near Cut, Northwood Dugan The Nautilus pattern predates the Carnival era and has been called Augustus Shell. Northwood produced an extensive line in cut and opalescent glass—some models have the early "Northwood" in script. The motifs were translated to Dugan who produced the few limited shapes in carnival. Apparently Dugan did not immediately remove the mark, so some pieces are found with the Northwood script. Creamer/teary Peach opt 25, 35, 100 (13), 35 (14) Purple 85 (12), 35, 40, 50 (14) Sugar bowls Purple 85, 150 (12), 115 (14) Purple 175 (10), 65, 80, 125 (14) Vases, see Vine wreath</p> <p>Near Cut, Cambridge Found in creamers and mugs of a similar design. Usually with no overall lettering. Creamers Margarit, Vista, Minn., 175 (03) Margarit, Ansonia, Iowa, 125 (03) Margarit, Sandston, Mass., 75 (03) Mugs Margarit 55 (07) Margarit, Graceville, Minn., 30 (11) Margarit, Barlow, Wis., 75 (02) Tumblers Margarit, Good Thunder, Minn., 55 (11) Margarit, Hamilton, Ont., 25 (14) Purple 80 (14)</p> <p>Near Cut, Northwood A vase pattern, known in the goblet and water set pieces. The height of goblet is 6 inches. Goblets Margarit 195 (07), 350 (14) Purple 90 (08), 50, 85 (07) Margarit 190 (11), 110 (14) Pitchers Margarit 450 (13), 140 (14) Margarit 800 (13), 500 (11) Purple 450 (13), 140 (14) Nesting Swan, Millersburg Amethyst 500 (12), 650 (13) Green 650 (11), 650 (12) Margarit 575 (12), 600 (14) Oven green 795, 790, 690, 675 (14) Nappy, shade shape Amethyst 3,700 (20) Nippon, Northwood Don't mistake Northwood's Nippon for Fortner Peacock's! Nippon has a peculiar design in the center. The Imperial Crest of the Empress of Japan. With the Peacock's tail pattern the design continues into the center. Bowls may have either a ball-and-stem back or the ribbon back although a few with plain backs have also been reported. Amethyst/purple 450, 550 (13), 300 (14) Green 575, 595 (13), 575 (14) Ice blue, one known, 6,000 (07) Ice green, only known, 12,000 (14) Margarit 475 (13), 300, 400 (14) White 11,000 (04)</p>	<p>Neutilus, Northwood Dugan The Nautilus pattern predates the Carnival era and has been called Augustus Shell. Northwood produced an extensive line in cut and opalescent glass—some models have the early "Northwood" in script. The motifs were translated to Dugan who produced the few limited shapes in carnival. Apparently Dugan did not immediately remove the mark, so some pieces are found with the Northwood script. Creamer/teary Peach opt 25, 35, 100 (13), 35 (14) Purple 85 (12), 35, 40, 50 (14) Sugar bowls Purple 85, 150 (12), 115 (14) Purple 175 (10), 65, 80, 125 (14) Vases, see Vine wreath</p> <p>Nesting Swan, Millersburg Amethyst 500 (12), 650 (13) Green 650 (11), 650 (12) Margarit 575 (12), 600 (14) Oven green 795, 790, 690, 675 (14) Nappy, shade shape Amethyst 3,700 (20) Nippon, Northwood Don't mistake Northwood's Nippon for Fortner Peacock's! Nippon has a peculiar design in the center. The Imperial Crest of the Empress of Japan. With the Peacock's tail pattern the design continues into the center. Bowls may have either a ball-and-stem back or the ribbon back although a few with plain backs have also been reported. Amethyst/purple 450, 550 (13), 300 (14) Green 575, 595 (13), 575 (14) Ice blue, one known, 6,000 (07) Ice green, only known, 12,000 (14) Margarit 475 (13), 300, 400 (14) White 11,000 (04)</p>		

Designed to be handy to use, the Field Guide is 6 x 9 inches. Within its 200 pages are listings for Carnival Glass patterns along with a photo of each pattern, a brief description, shapes found in each pattern, and prices for each shape in the colors available. Price reports are based on auction sales from the past 15 years with emphasis on the most recent years, up to and including some of 2015. This edition has 29,000 individual prices and 1,200 photographs.

Table of Contents
 Classic patterns, A-Z
 Lettered carnival
 Vases
 Novelties and miniatures
 Decorated carnival
 Lamps and shades
 Hatpins
 Spectacular Carnival sold at auction

Ordering information
 The 2015 Field Guide may be ordered from:
[Heart of America Carnival Glass Association](http://www.heartofamericacarnivalglass.com)

The price is \$20 for individual US shipments.



CARNIVAL GLASS SHOWCASE

Where collectors gather to strut their stuff and tell their stories.

CARNIVAL GLASS SHOWCASE

Where collectors gather to strut their stuff and tell their stories.



We have a passion! Join in on the fun!
 Sign up for our Newsletter and be sure to tell a friend!

www.CarnivalGlassShowcase.com

Petal and Fan

By Dr. Larry Keig

The stylized Petal and Fan pattern, attractive but unremarkable, is unfortunately sometimes dismissed as humdrum. That may be because it is customarily associated with a small number of shapes in a narrow range of colors. While it is undeniable the color spectrum is limited, more shapes are available than initially meet the eye.

The principal design elements of the interior are: (a) a center blossom with alternating long and short petals, all of them stippled, and (b) fans set between the long petals, their bases coming to within about three-eighth of an inch from the short and the tips of their folds extending outward toward the edge.

The exquisitely cast exterior is *Jeweled Heart*, a pattern also found on the reverse of Dugan's collar-based *Cherries*, *Farmyard*, *Smooth Rays*, and once in a while collar-based *Ski Star*, and on water sets. Its key features are: (a) highly embossed outlines of eight hearts, (b) "jewels" that dangle like a glittering pendant from the point at which the ventricles converge and rise like tied down, helium inflated balloons from the tuck at the base of the heart, and (c) tiny beads which follow the interior contour of the heart and jewels. The upper edge is serrated.

Two molds are known to have been employed in producing the small bowls. One has a 24-rayed star embedded on the undersurface of the base. The other has an unpatterned base. Yet another mold was, of course, used to make the large items, where all have a 38-rayed star cut into the underside of the base.

Based on advertising placed in trade publications of the day and the colors available, *Petal and Fan* appears to be exclusively Dugan. There is little indication to suggest it was made after Diamond assumed ownership of the company in July 1913.

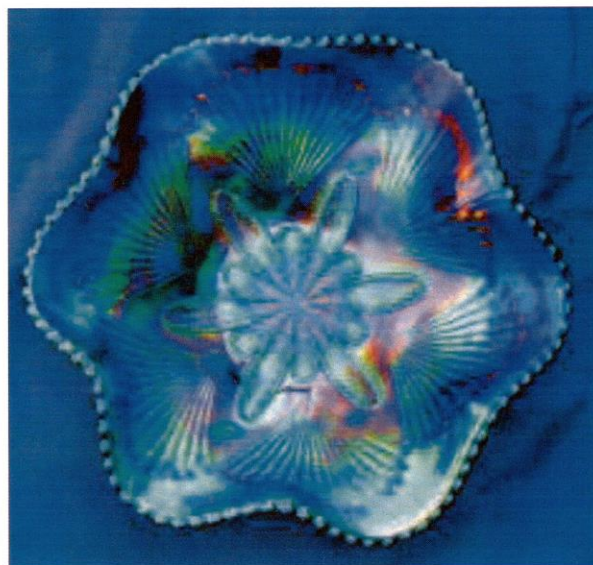
Conventional Shapes

The most available shapes are six- and eight-ruffled bowls, small plates with a tightly-crimped edge, and, in lesser quantities, small crimped-edge bowls. Ruffled bowls are seen regularly in both large and small sizes, crimped bowls and plates only in the small size.

The large ruffled bowls range from ten to eleven inches in diameter and stand from three to three and one-half inches tall. The eight-ruffled are deeper than the six-. The eight-ruffled are, in my view, more attractive than

the six-, because all the heart medallions are situated within the folds of ruffles.

The most available color is the peach opal. The next most often seen is the amethyst, typically a relatively dark purple. The white are seen less often. By far the hardest to find are the marigold, in all likelihood because marigold was a color made in comparatively small amounts by Dugan, production exploding only after the firm's 1913 restructuring. A honey amber is reported as having sold for \$750 in 2002. The amethyst with brilliant iridescence is normally considered the most desirable.



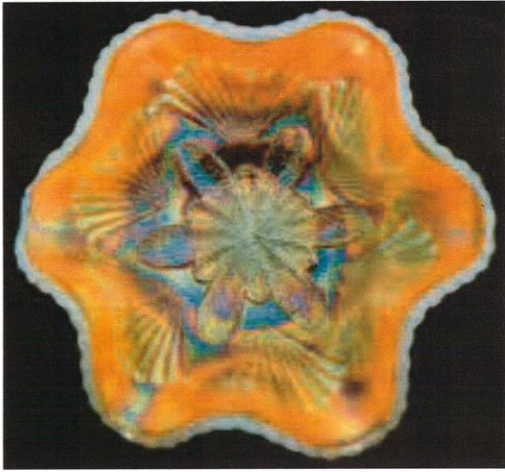
An eye-catching large ruffled bowl in purple.

Photo courtesy of Kevin and April Clark.

Illustrated is a showy large ruffled bowl in purple from Kevin and April Clark's collection. It measures ten inches in diameter and stands three and one-half inches tall. The Clarks also own large ruffled bowls in peach opal, white, and marigold.

The small bowls are also found six- and eight-ruffled. Peach opal and amethyst are the most often seen. The white are harder to locate. The small marigold are really difficult to track down, seen even less often than the large.

The six-ruffled small bowl illustrated, from Kate and Bill Lavelle's collection, has a 24-rayed star pressed into the bottom of the base. It has pretty surface color, opalescence, and iridescence. Not many peach opal *Petal and Fan* bowls are as attractive as this one.

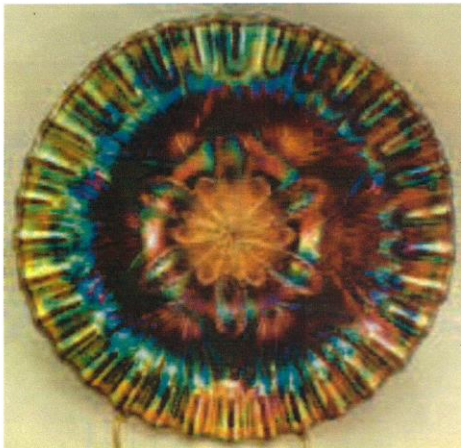


A pretty small ruffled bowl in peach opal.

Photo courtesy of Kate and Bill Lavelle.

Dugan also marketed berry sets. In recent years, sets—a master and six serving-size bowls, all ruffled—have sold in peach opal and white, the former easier to find than the latter. As the raconteur Tom Burns has on occasion noted, you know a set has been cobbled together if all items are well matched in color. That's because packers were unselective when sets were crated and because quality control in the classic carnival era was nothing like it is today. Regardless, I'd bet a contemporary collector would pay more for a well-matched set than for one with items of disparate base or surface color and iridescence.

Tightly-crimped plates are easier to locate than crimped bowls, but the plates are generally considered more desirable. The plates measure from six and one-half to seven inches in diameter, size dependent on the degree of flatness or uprightness of the crimps.



A beautifully iridized crimped plate in amethyst.

Photo courtesy of Don and Kris Dorais.

Crimped-edge plates have been reported only in peach opal and amethyst. The beautifully iridized amethyst illustrated is six and one-half inches in diameter and one and one-eighth inches tall. It belongs to Don and Kris Dorais. They bought it from Moe Myers, a well-known Dugan and vase collector and longstanding NECGA member, in 2005.

I am surprised no small plates have surfaced in white. It is also remotely possible a marigold may be out there somewhere. I have wondered if flat (non-crimped) plates exist.

Bowls with tightly-crimped edges, like plates, have been reported only in peach opal and amethyst, in about equal proportions. Some are quite shallow, others deeper. The attractive deep crimped illustrated had been owned by Joan and Tom Steskal until it sold at the 2015 ICGA convention auction in St. Louis.



An unusually deep crimped-edge small bowl in amethyst.

Photo courtesy of Seeck Auctions.

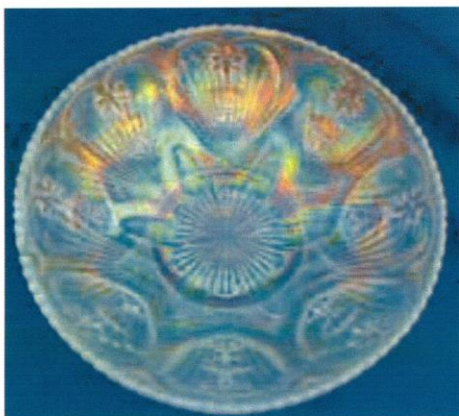
Seldom Seen Shapes

Several out-of-the-ordinary shapes have been confirmed. Some are known to have been made from the large mold, others from the two small molds.

Large Bowls. Large ice-cream-shape bowls are dimensionally substantial and visually impressive. Measuring about ten inches in diameter, they have been confirmed in white and marigold, the former seen more often. They may also be available in peach opal and amethyst.

The illustrated white ICS bowl had been in Bill and Carole Richards's collection before it sold at a Burns auction in May 2014. Its top diameter is nine and three-fourth inches, and it is three and one-half inches tall. It would look nice at Christmas heaped high with

spherical ornaments in assorted vivid colors or holiday-wrapped Hershey Kisses.



Striking in appearance, a large ICS bowl in white.

Photo courtesy of Burns Auction Service.

A large square-ruffled bowl is known. As far as I have been able to determine, it has been confirmed only in amethyst. The one of which I am aware sold at the 2004 Lincoln Land convention auction conducted by David and Amy Ayres.

Someone out there owns an amethyst rose bowl. Until it changed hands at the 1998 ICGA convention auction conducted by the Seecks, it had been in John and Lucile Britt's collection. It brought \$235, a reasonable price for what may be a one-of-a-kind. I presume it was produced from the large mold but am not certain. It should display the striking Jeweled Heart secondary pattern to its best advantage.

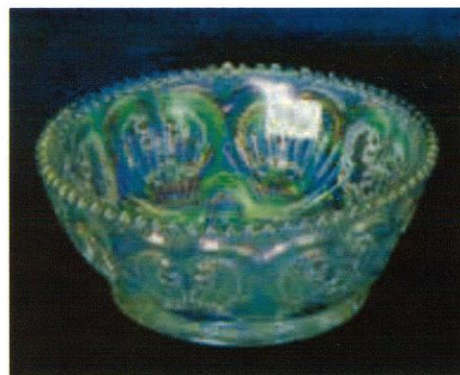
Small Bowls. Small bowls are occasionally found in a banana-shape and in a non-crimped deep round sauce. The banana-shape, with two sides folded, has been reported only in peach opal. While scarce, it is not as hard to find as once believed.

The peach opal banana-shape bowl is also available as part of a two-piece basket. In baskets, the bowl is set in an ornate metal frame. One sold at the ACGA convention auction, conducted by the Burns Auction Service, in 1998. Another was offered for sale by Tom and Sharon Mordini at the 2000 ICGA convention in Des Moines.

Other Dugan bowls set in metal frames—for example, large collar-based Ski Star, mid-size Daisy Dear, and small deeply ruffled Fishscale and Beads and ruffled and tightly-crimped banana-shape Smooth Rays/Jeweled Heart—also occasionally surface. Frames for baskets or condiment containers of this type were outsourced by the firm, not in-house produced. These

baskets were marketed in small quantities, probably from late 1910 through 1911.

The non-crimped deep round sauces measure four and three-fourth inches in diameter and stand just over two inches tall. I believe they are the proofs from which the other small bowls and plates were configured. Two slightly different versions are known. One has a ledge around the top interior. This ledge resembles ledges that hold in place the tops to covered sugars and creamers. The illustrated white sold at Seeck Auctions in Mason City, Iowa, in November 2013. The under-surface of its base is unpatterned.



A non-crimped deep round sauce.

Photo courtesy of Seeck Auctions.

The other deep sauce is absent the ledge, and it has a star embedded in the bottom of the base. The illustrated example was sold by the Burns Auction Service in August 2015. I believe its base color is amethyst, although it looks "sorta horehound" as Tom described it in the listing. The light base color is atypical of a piece presumably made by Dugan. I suspect this is the same bowl pictured in the Edwards-Carwile *Encyclopedia* (7th ed., p. 406) as the iridescence on the two looks identical.



A "sorta-horehound" non-crimped deep round sauce.

Photo courtesy of Burns Auction Service.

Also illustrated is what I am inclined to call a tightly-crimped ice-cream-shape bowl. It is five and one-half inches in diameter and one and three-fourth inches high. In size, it is similar to Northwood's Peacock and Urn small ICS, though the edge treatments are different: the Northwood scalloped, the Dugan crimped. Until Don and Kris Dorais purchased this interesting shape in 2000, it had belonged to Paul Berube, a long-time NECGA member also active in other clubs.



What some may call a small ice-cream-shape bowl in amethyst.

Photo courtesy of Don and Kris Dorais.

It is sometimes difficult to categorize bowl shapes. What one collector may, for example, call deep round, another may describe as ICS. I've grappled with distinctions like this for years, without arriving at an entirely satisfactory conclusion. But for Dugan small bowls, I currently apply two "rules," both of which must be met: a "two-inch rule" for height and a "five-inch rule" for top diameter. To qualify as a "deep sauce," the bowl must be at least two inches tall and less than five inches in diameter. A bowl that is less than two inches tall and five or more inches in diameter is something else.

Hartung's Petal and Fan

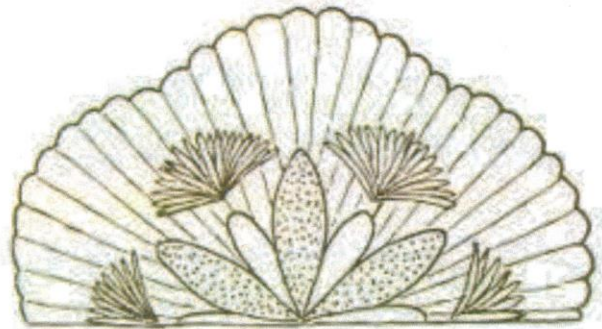
Marion Hartung's Petal and Fan line drawing (*First Book of Carnival Glass*, p. 41) differs from the above description. In Hartung's (see drawing), the long petals are stippled, the short non-stippled. On every Petal and Fan I have seen or heard of, all petals are stippled.

According to Hartung, the petals and fans are superimposed over a background of "smooth even ribs." I

have yet to see ribs (or smooth rays) of this type and suspect she was conflating ribs with the folds of fans.

While it's possible the Hartung pattern exists, I have doubts. My guess is that she got sidetracked while sketching and forgot to stipple the short petals.

PETAL AND FAN



Marion Hartung's Petal and Fan line drawing from Book 1.

Permission granted by HOACGA.

If examples of the Hartung are available, they are exceedingly rare. And if they exist, the Petal and Fan we regularly see is a Variant.

This situation reminds me of discussions of differences between Garden Path and Garden Path Variant. Hartung provides line drawings for both although, as far as I know, no Garden Path bowl or plate has been confirmed. I suspect, in this case, either she got waylaid while drawing Garden Path, forgetting to add the "palm trees" and "winged hearts" around the outer edge, or (more likely) those elements were cloaked by the ruffles on the bowl from which she sketched. But it's possible a Garden Path will sometime surface so I keep looking, as I have for more years than I care to remember.

I continue to search for the Hartung Petal and Fan, too.

Acknowledgements

I am grateful for photos provided by the carnival community: Tom Burns, Kevin and April Clark, Don and Kris Dorais, Kate and Bill Lavelle, and Jan and Jim Seeck. Thanks also to a cadre of conferees who, along the way, fact-checked, verified or refuted, and supplied information: Neal Becker, Carl Booker, Barb Chamberlain, and Dick Thorne.

2016 NECGA MEETING DATES

January						
S	M	T	W	TH	F	S
					1	2
3	4	5	6	7	8	9
10	11	12	13	14	15	16
17	18	19	20	21	22	23
24	25	26	27	28	29	30
31						

February						
S	M	T	W	TH	F	S
	1	2	3	4	5	6
7	8	9	10	11	12	13
14	15	16	17	18	19	20
21	22	23	24	25	26	27
28	29					

March						
S	M	T	W	TH	F	S
		1	2	3	4	5
6	7	8	9	10	11	12
13	14	15	16	17	18	19
20	21	22	23	24	25	26
27	28	29	30	31		

April						
S	M	T	W	TH	F	S
					1	2
3	4	5	6	7	8	9
10	11	12	13	14	15	16
17	18	19	20	21	22	23
24	25	26	27	28	29	30

Spring Fling - Wells, ME

May						
S	M	T	W	TH	F	S
1	2	3	4	5	6	7
8	9	10	11	12	13	14
15	16	17	18	19	20	21
22	23	24	25	26	27	28
29	30	31				

June						
S	M	T	W	TH	F	S
			1	2	3	4
5	6	7	8	9	10	11
12	13	14	15	16	17	18
19	20	21	22	23	24	25
26	27	28	29	30		

July						
S	M	T	W	TH	F	S
					1	2
3	4	5	6	7	8	9
10	11	12	13	14	15	16
17	18	19	20	21	22	23
24	25	26	27	28	29	30
31						

August						
S	M	T	W	TH	F	S
	1	2	3	4	5	6
7	8	9	10	11	12	13
14	15	16	17	18	19	20
21	22	23	24	25	26	27
28	29	30	31			

September						
S	M	T	W	TH	F	S
				1	2	3
4	5	6	7	8	9	10
11	12	13	14	15	16	17
18	19	20	21	22	23	24
25	26	27	28	29	30	

NECGA Convention,
Leominster, Mass

October						
S	M	T	W	TH	F	S
						1
2	3	4	5	6	7	8
9	10	11	12	13	14	15
16	17	18	19	20	21	22
23	24	25	26	27	28	29
30	31					

November						
S	M	T	W	TH	F	S
		1	2	3	4	5
6	7	8	9	10	11	12
13	14	15	16	17	18	19
20	21	22	23	24	25	26
27	28	29	30			

December						
S	M	T	W	TH	F	S
				1	2	3
4	5	6	7	8	9	10
11	12	13	14	15	16	17
18	19	20	21	22	23	24
25	26	27	28	29	30	31

