

# New England Carnival Glass Association

New England  
**Carnival Glass**  
Association

40th Anniversary  
1975-2015

www.NECGA.com



## President

Don Dorais  
150 Highland Avenue  
Cumberland, RI 02864  
(401) 724-4874  
[ksd24ddd24@cox.net](mailto:ksd24ddd24@cox.net)

## Vice President

Steve Lindquist  
671 Ridge Road  
Wethersfield, CT 06109  
(860) 257-1816  
[stevenandgary@cox.net](mailto:stevenandgary@cox.net)

## Treasurer

Gary Sullivan

## Secretary/Recording Secretary/Bulletin Editor

Kristine Dorais

## Board of Directors

Norm Spicher

Anna Ketola

Harold March

Bob Preseau

Joanne Andrews

**Webmaster:** Steve Lindquist

\*\*\*\*\*

*Vol. 35, No. 2*

*CARNIVAL GLASS FOREVER*

*APRIL 2016*

\*\*\*\*\*

*Meeting Highlights...Look Inside For More!*

***SUNDAY,  
APRIL 17<sup>th</sup>  
10 A.M.***



Fenton's Orange Tree Loving Cup in Green  
Millersburg's Strawberry Wreath's Square Shaped  
Bowl in Amethyst



**APRIL MEETING IN  
WELLS, MAINE**

Show & Tell Theme

**ICE GREEN, SQUATTY  
VASES & NEW FINDS**

# The President's Newsletter

Kris is writing this letter as we see it snowing outside. Don't they know it is April...Oh, well, it's New England.



For those attending the Spring Fling, we'll be meeting all of you in a couple of weeks. Looking forward to seeing Jocelyne's beautiful Rose Column Vase. I have it on record that Brian is bringing a surprise for all to see...a recent find! He wouldn't even tell Kris!

So plan on driving to Wells, Maine to attend our Saturday night dinner at Mike's Clam Shack located at 1150 Post Rd, Wells. Thanks Norm for making the reservations. Dinner will be around 6:00/6:30 p.m. Plan on meeting for cocktail hour(s) at the hotel for snacks and drinks around 4:00 p.m. The Sunday morning meeting will start at 10:00 a.m. with Show & Tell. Looking forward to seeing everybody on the 16<sup>th</sup>.

Sincerely,  
President Don

## **Heart of America Carnival Glass Convention, April 20 – 24, 2016**

Embassy Suites Airport, Kansas City, MO 816-891-7788. Burns Auction: Galen and Kathi Johnson collection. Contact: Bob Grissom – [bgrsm31@comcast.net](mailto:bgrsm31@comcast.net). Visit our website at [hoacga.com](http://hoacga.com) to register.

**Keystone Carnival Glass Convention, May 11-14, 2016** at the Holiday Inn, Grantville, PA (717) 469-1554. Wroda Auction. Contact Aaron Hurst at [alanhurst6@gmail.com](mailto:alanhurst6@gmail.com) for information.

**Lincoln Lands Convention, June 2-4, 2016** at Milwaukee's Best Western Airport. Their website is [www.LLCGC.org](http://www.LLCGC.org).

**American Carnival Glass Convention, June 15-18, 2016**, Wroda Auction Center, Greenville, OH. For information, see their website: [myacga.com](http://myacga.com).

**ICGA 2016 Convention, July 13-16, 2016**, Blue Gate Inn, 800 South Van Buren St., Shipshewana, IN 48565. Reservations: 1-260-768-7688. Seeck Auction. Website: [www.internationalcarnivalglass.com](http://www.internationalcarnivalglass.com).

**New England Carnival Glass Association, Sept. 8-10, 2016** at the Doubletree by Hilton, Leominster, Mass. (978) 534-9000. Tom Burns Auction. Contact Don Dorais at (401) 724-4874 or [ksd24ddd24@cox.net](mailto:ksd24ddd24@cox.net). Visit our website at [www.necga.com](http://www.necga.com).

**Mid- Atlantic Carnival Glass Club Jamboree, October 20-22, 2016** at the Ramada Plaza Hotel, Hagerstown, MD. Call 301-797-2500 to book your room and secure your rate \$82.00 a night!



A past member, Bill Mizell from Silver Spring, Maryland passed away last month. Many of you will remember Bill as a very spiritual man who loved carnival glass. A giant of a man with a voice that everyone listened to.

Also, Ralph Doyle from Delmar, NY passed away last year. We just found this out. His wife Judy told me that he was unable to attend conventions, but looked forward to reading our NECGA newsletter and read every article.

Notes from the Sunday, Feb. 21<sup>st</sup> meeting.

Present at the meeting: Kris & Don, Gary & Steve, Ben Perez, Bruce & Anna, Vickie & John Rowe, Norm Spicher, Chase Marquis from Maine (his first meeting), Louie and Charlotte Carpick. After soup and sandwiches and delicious desserts, Show & Tell took place and the meeting started at 1:10 p.m. A motion to accept the bulletin minutes...All were in favor. A motion to accept the treasury report...all were in favor.

2016 Convention:

- President Don passed out the hotel contract (2 year contract) and basically it is the same. The differences are: a \$2.00 increase to meals for 2016 and 2017 and in 2017, the hotel room rate will go up \$1.00. It was decided that the club would mail the \$600 down payment and also send in the payment for 2017.
- We raised the idea of offering to provide a breakfast at the hotel for those attending the convention. The cost per person was \$14.00 which seemed to be too costly for the club to provide at this time.
- Another idea was offered to either provide a free breakfast for those attending the banquet or possibly subsidize the banquet meal and offer a discount to those that paid for their meal by the cutoff date. We decided to table this until the April meeting. Gary made the motion and it was seconded by Norm. All were in favor.
- Another motion made by Gary was to put together a convention banquet speaker contract in writing outlining what they receive (stipend, hotel room nights, banquet meal). This will be brought to the April meeting to finalize and vote on. The seminar speakers do not receive a stipend, but recently the hotel has offered to reduce their hotel room fee.
- Pizza and antipasto on Thursday night was a big hit and will be repeated for 2016.

Meeting adjourned at 1:55 p.m.

Theme: Ice Green, Squatty Vases and New Finds

Next Meeting: Sunday, April 17<sup>th</sup> at 10:00 a.m.

Meal: Munchies for the cocktail hour.

Join the Stretch Glass Society in  
Celebrating the Centennial of Stretch Glass

In 1916 nine American glass companies created and introduced iridescent stretch glass to consumers. Production would continue until the mid 1930's and resume in the 1970s when the Fenton Art Glass Company re-introduced iridescent stretch glass and included it in its annual offerings for the next 40 years. Over 1000 distinct items were created, many of which were produced in several of the over 30 colors in which stretch glass was made.

Visit [www.stretchglassociety.org](http://www.stretchglassociety.org) and Stretch Glass Society on Facebook to find out more about the exhibits and special events planned as the Stretch Glass Society celebrates the 100th anniversary of stretch glass.

*A century of  
handmade stretch  
glass in America*

*The Stretch Glass Society*  
Founded April 21, 1974 in Denver, PA.  
PO Box 117, Sunbury Ohio 43074

## SPRING FLING

**Hampton Inn & Suites**

**900 Post Road, Wells, Maine 04090**

**Sat., April 16 & Sun., April 17th**

**Check-in time- after 2:00p.m. April 16<sup>th</sup>**

**Happy Hour- 4:00 p.m.**

**Saturday Dinner - 6:00/6:30 p.m.**

**Restaurant: Mike's Clam Shack**

**Free Sunday Morning Continental Breakfast**

**Sunday Meeting starts at 10:00 a.m.**



# ROSEBOWLS



Northwood's  
Drapery in  
White

Millersburg's  
Hobnail Swirl in  
Marigold



Contemporary  
Faberge  
Rosebowl in  
Red by Fenton.  
It was the final  
design before  
it was put in  
production  
dated 3/23/06.



Northwoods's Leaf &  
Beads in Green



Northwood's Finecut  
& Roses in Ice Blue

Dugan's  
Grape Delight  
in Purple.  
Notice the  
smooth  
crimped edge  
that is harder  
to find.



NECGA Treasury Report		NECGA Convention Report	
For the period January 1, 2016 thru Mar 31, 2016		2016	
Opening Balance - January 1, 2016	\$7,255.16		
Revenues:		Convention Revenue:	
Dues	126.00	Banquet Meals	0.00
Fees	150.00	Mini Auction	0.00
Convention	(600.00)	Card Game/Barrel Raffle	0.00
Other	0.00	Tom Burns - Auction	0.00
Total Revenue	(324.00)	Total Convention Revenue	0.00
Expenses:		Convention Expenses:	
Postage	35.50	Hotel Costs/Meals	600.00
Ink/Paper	0.00	Guest Speaker Fee	0.00
Meeting supplies	4.45	Pizza Party Thus Night	0.00
Web site	0.00	Auction Dinner Sat Night	0.00
Hall Rental	270.00	Hospitality Room	0.00
PayPal Fees	0.00	Display Awards	0.00
Rack Cards	0.00	Banquet Favors	0.00
Other	0.00	40th Anniversary Cake	0.00
Total Expense	309.95	Total Convention Expenses:	600.00
Increase /(Decrease) in Fund Balance	(633.95)		
Ending Fund Balance - Mar 31, 2016	\$6,621.21	Net Convention Profit / (Loss)	(\$600.00)
2017 Convention Deposit	\$600.00		
Cash Balance	\$6,021.21		

### New England Carnival Glass Association Membership Application

Dues: \$ 18.00 per year per household. (Membership renewal is due on your anniversary date)

Name \_\_\_\_\_  
 Address \_\_\_\_\_  
 City \_\_\_\_\_ State \_\_\_\_\_ Zip Code \_\_\_\_\_  
 Telephone # \_\_\_\_\_ - \_\_\_\_\_ Email address: \_\_\_\_\_

**Send application form and dues (U.S. funds) to: Gary Sullivan, 671 Ridge Road, Wethersfield, CT 06109**

Membership includes, bi-monthly meetings, bulletins and all functions and outings. If you would like the bulletin emailed to you (vs. mail), please let us know on this form.

Make checks payable to N.E.C.G.A.

Email \_\_\_\_\_ Mail \_\_\_\_\_

#### To pay with Paypal:

Paypal payments are accepted from anywhere in the world, but the cost is \$18 and must be in United States dollars. To pay with Paypal, go to the Paypal website and send \$18 payment to newenglandcarnivalglass@gmail.com. You must include all of your contact information, including name, mailing address and email address with your payment (in the memo section is fine).

# www.CarnivalGlass.com

44 YEARS OF SATISFIED MAIL-ORDER CUSTOMERS

UPDATES EVERY TWO WEEKS—CARNIVAL GLASS IN MINT CONDITION

Lloyd R. Ward

P.O. Box 1006, Mayfield, KY 42066

Tel: (270) 251-2005 • Cell: (270) 970-0599

E-Mail: lrward@carnivalglass.com

## Thinking of Selling Your Collection? Turn Your Carnival Glass into Cash!

I buy one piece, 20 pieces, or a collection of Carnival

Visit [www.CarnivalGlass.com](http://www.CarnivalGlass.com)-  
THE Place for Carnival Glass!



# New England Carnival Glass Association Convention 2016 - September 8-10 Doubletree by Hilton-Leominster, Mass.

Call for Reservations 1-978-534-9000

Call for discounted room rate of \$98 plus tax per night before Aug. 8<sup>th</sup>

**Register under New England Carnival Glass Association**

Banquet Dinner: Fri., Sept. 9

Auction: Sat., Sept. 10

## Convention Schedule

Thursday night ... Pizza Party 6:00 p.m.

Friday... Seminar #1: 2:00-3:00 p.m...bring your piece of glass to  
**Stump Tom Burns**

Banquet 6:00 p.m.

Guest Speakers: **Will be finalized at the April meeting**  
Followed by Mini Auction

Saturday... Seminar #2: 11:15 a.m.-Noon...**Gary Sullivan & Steve  
Lindquist...More to Come!**

Auction Preview: 1:30 p.m. to 3:00 p.m.

Tom Burns Auction begins 3:00 p.m.

Call Don  
Dorais  
with  
questions  
401-  
724-4874

***Visit Brimfield...the largest Outdoor***

***Antiques event in New England from Sept. 8-13***

***6,000 dealers on hand – 60 minutes from hotel***

### AUCTION TEASERS:

PICTURES OF THE GLASS WILL BE PLACED ON THE WEBSITE. KEEP  
CHECKING.... [www.necga.com](http://www.necga.com)

The banquet buffet meal is \$32 a person. Plated meal: Chicken **OR** Beef  
(similar to last year). Please let Gary know your choice.

Send your payment by August 10<sup>th</sup> to: **Gary Sullivan**  
671 Ridge Road, Wethersfield, CT 06109

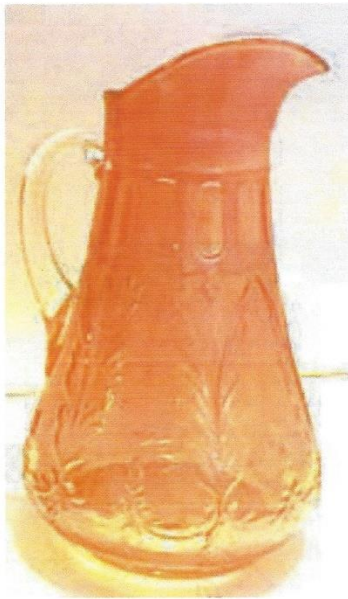


## Quill Pitchers and Tumblers

by Larry Keig

Rose Presznick's Feather and Scroll pattern name is more descriptive, but it's Marion Hartung's Quill label that has stuck. In fact, the pattern bears scant resemblance to a quill. Regardless, Quill is an attractive pattern, produced in carnival during the Dugan years but not beyond.

Dugan probably created the pattern design soon after launching its carnival line in 1909. It has been written that the firm first offered Quill in non-iridescent pattern glass and in the Filigree line in the pre-carnival era. I can find no evidence in the "Fry" anthology of Butler Brothers (and other wholesalers') catalog reprints or elsewhere to confirm this claim. However, it is possible it may have been advertised in other early promotional materials.



This beautiful marigold Quill pitcher was once owned by the Schroeders, but is now in Gerald Welsh's collection.

What I have found is that Dugan produced pattern glass and Filigree in what is now called Wavy Quill. This pattern is not to be confused with carnival Quill.<sup>1</sup>

### Pitchers

The principal design elements of Quill pitchers are: (a) six double feather figures, each "tied" at the bottom, one of which is partially obscured by the handle; this element occupies about two-thirds of the available

portion of the) surface, (b) a one and one-half inch enclosed band of twelve standing ovals just above the feathers, and (c) an unpatterned one-inch self-contained band above the ovals. There are also non-descript small stylized figures interspersed among the feathers.

Mold blown, the pitchers are about ten and one-half inches tall at their highest point, ten inches on the sides opposite the spout and handle. Their handles—clear

crystal on the marigold, a nearly opaque deep purple (or oxblood) on the amethyst—are separately attached. The handle is sometimes rough where it was attached to the body, especially at the top.

Pitchers are available in marigold and amethyst. The color quality is highly variable. The surface color on the marigold ranges from a wispy light to an intense dark. The base color of the amethyst is almost always a rich wine purple. Iridescence on the marigold runs from weak and washed out to a strong marigold with pastel pink or rose highlights. Iridescence on the amethyst can be electric, multicolor, "good gold," or silver. The shiny silver treatment is what the manufacturer alternately called "steel" and "gun metal." Surface color is on occasion even all around and from top to bottom but more often uneven with a combination of the aforementioned iridescent treatments.

Dugan marketed gun metal and steel as color options, I suspect to unload ghastly cast glass that came into being when something went awry during production to avoid taking a financial hit. This is, of course, a color that is almost universally shunned by today's collectors.

The pretty marigold pitcher pictured had been in the collection of former ICGA president Carl and editor Ferne Schroeder until selling last April. At that auction, it was purchased by Gerald Welsh from Iowa. Gerald is fortunate to have something tangible by which to remember the Schroeders.

The extremely nice amethyst example of the Quill pitcher is courtesy of Shirley and Ray Henry.





The vibrant amethyst pitcher illustrated is owed by Ray and Shirley Henry from South Carolina. They specialize in collecting pitchers with matching tumblers, and they are constantly on the lookout for upgrades. Their Quill had been in Lawrence Renn's collection until it was sold by Seck Auctions in November 2015.

### Tumblers

The Quill tumbler design is different from the pitcher. It is defined solely by the double feathers, as the enclosed band of standing ovals and the contained plain band above the ovals on the pitcher are absent on the tumbler.

Tumblers are three and fifteen-sixteen inches tall. They have a two and seven-eighth inch top diameter and a two and five-eighth inch base diameter. The base of the tumbler is unpatterned. They were made from a three-part mold.

Tumblers, like pitchers, are available in marigold and amethyst. Besides the typical iridescent treatments, the amethyst is also found with the steel overlay.



The marigold and purple Quill tumblers are seen above.

*Purple tumbler courtesy of Richard Cinclair.*

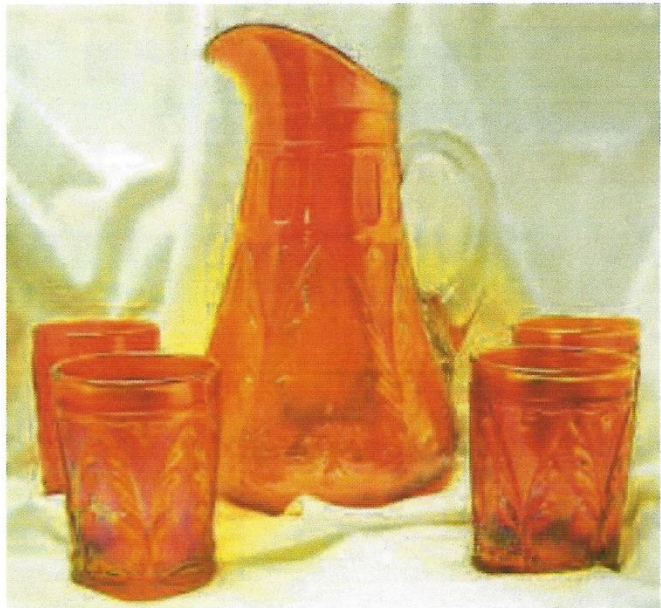
Both of the featured tumblers have sparkling iridescence. The shimmering marigold had been in Carl and Ferne Schroeder's collection and remained with Ferne until she died in 2015, after which Barb and Don Chamberlain bought it at auction. It may have been providence and is certainly fitting that its ownership passed from one Pump editor to another.

Until recently, the radiant multicolor amethyst was in former ICGA president Richard Cinclair's hands. In this case, there is no coincidence as to how its ownership passed from him to a new owner. He responded to a

WWWCGA Mailing List call for photos of nice Quill pieces and then agreed to sell it to a grateful Dugan collector.

No made-from-tumbler whimsies have been reported.

### Water Sets



This well matched marigold water set is courtesy of Steve Gregg.

Quill pitchers and tumblers, especially those with great color, are hard to find. Water sets are even tougher to come by.

The well-matched marigold set pictured is from the collection of Steve Gregg. He purchased it from Lloyd R. Ward, a luminary in the world of carnival glass sales.

I have been unable to track down an amethyst water set to show.

My thanks to those who provided the great photos and relevant information for the article.

### Note

<sup>1</sup>A picture of a gold-decorated green Wavy Quill pitcher can be viewed in Heacock, Measell, and Wiggins's Dugan/Diamond: The Story of Indiana, Pennsylvania, Glass (p. 84, n. 191). An advertisement for a Wavy Quill lemonade set from a 1909 Butler Brothers catalog is reproduced in the same book (p. 65).

[Larry.Keig@cfu.net](mailto:Larry.Keig@cfu.net)



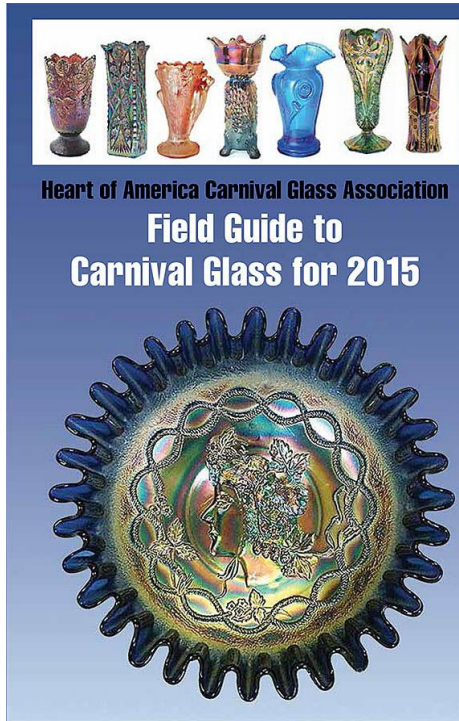
# Butterfly and Berry Water Pitcher Variant

A piece Steve and I picked up in Tampa is this Butterfly and Berry water pitcher in amethyst. As we were previewing the Tampa auction glass, Tom Burns mentioned it was a variant, so I had to take a closer look. We already have a Butterfly and Berry Water Set in Blue, so we pulled up a photo to compare. Sure enough, this amethyst pitcher is different than our blue one. On the panels with the butterfly, our blue one has a leaf under the butterfly but the amethyst does not. On the panels with berries, the blue one has seven berries while the amethyst only has five. Tom said that the amethyst version came first, and then someone at the Fenton factory decided that the piece needed some more added to the design, so extra leaves and berries were added. I've seen other water pitchers that have had changes to the pattern to add more detail including Northwood's Dandelion tankard and Fenton's Orange Tree. So always keep your eyes open for something different...Gary Sullivan





# The HOACGA Field Guide to Carnival Glass for 2015



**84 HOACGA Field Guide to Carnival Glass**

**Mirrored Lotus meadows**  
 Margarid 200 (07), 300 (08)  
 White 160, 250 (12), 100 (13)

**Mirrored Diamonds and Pleats**  
 Possibly made by Swartz; I've only heard of the pattern in margarid. Rose bowls and bowls are worth \$15 to \$25.

**Mirrored Diamonds and Pleats**  
 Margarid 145 (13)  
 Blue 145 (13)  
 Blue, cream, open sugar Margarid 145 (13)  
 Blue 145 (13)  
 Blue, cream, open sugar Margarid 145 (13)  
 Solid bowl, 8-inch, dome footed Margarid 75 (12)

**Frank bowl, with base**  
 Margarid 175 (08), 200 (10)

**Cordial set (decanters, 6 cordials, tray)**  
 Margarid 1,050 (12)

**Molter, Ede**  
 Cordial, 3 1/2 inches tall Margarid 200 (13)  
 Decanter with stopper Margarid \$1 (6 day 05)  
 Decanter, 2 wine glasses Margarid 225 (14)

**Wine Glass**  
 Margarid 70 (02)

**Candlesticks, 8 inches**  
 Margarid, pair 400 (13), 240 (14)  
 Margarid, single 195 (03)

**Wine, see New Year scene**

**Moonprint, Brockwitz**  
 Margarid, slip shape, 2,000 (11), 2,800 (14)  
 Amethyst 200 (13), 1,400 (14)  
 Blue, tulip shape 22,000 (07)  
 Margarid 750 (08)

**Punch bowls and bases**  
 Amethyst 175 (08), 200 (08)  
 Blue 1,050 (07)  
 Green 75, 85 (08), 85 (10)  
 Margarid 200 (08), 100 (08)

**Punch cups**  
 Amethyst 55 (03), 40 (05), 26 (12)  
 Green 817 (03)  
 Green 28 (11)  
 Margarid 26 (02)

**Alphabetical Listings**

**Multi-Fruits and Flowers sheetsets**  
 Amethyst 300 (13), 475 (14)  
 Green 500 (12), 275 (14)

**Nauticus, Northwood/Dugan**  
 The Nauticus pattern predates the Carnival era and has been called Argonaut Shell. Northwood produced an extensive line in tussard and opalescent glass—some molds have the early "Northwood" in script. The molds were transferred to Dugan who produced the few limited shapes in carnival. Apparently Dugan did not immediately remove the mold, so some pieces are found with the Northwood script.

**Decanter/gray**  
 Peach spot 25, 58, 100 (13), 35 (14)  
 Peach spot, stone, Lisbon NY, 95 (05)  
 Purple 85 (13), 35, 40, 50 (14)

**Sugar bowls**  
 Peach spot 65, 150 (13), 115 (14)  
 Purple 115 (13), 60, 80, 125 (14)

**Wine, see New Year scene**

**Near Cut, Cambridge**  
 Found in creamers and mugs of a similar design. Usually with reverse lettering.

**Creamers**  
 Margarid, Vicks, Ames, 125 (03)  
 Margarid, Amata, Jones, 105 (03)  
 Margarid, Sandstone, Minn, 75 (05)

**Mugs**  
 Margarid 55 (03)  
 Margarid, Gravelin, Minn, 30 (11)  
 Margarid, Baden, Wis, 70 (03)

**Tumblers**  
 Margarid, Good Thunder, Minn, 55 (11)  
 Margarid, Hamble, Ont., 38 (14)  
 Purple 800 (10)

**Near Cut, Northwood**  
 Margarid, light comp. 425 (03)  
 Margarid, round, blue ind., 3,700 (02)  
 Vaseline 725 (09), 600 (12)  
 Chip plate, 10 inch, 1 Crown Green 6,000 (09)  
 Margarid 3,100, 3,500 (08)  
 Spitzer known

**Night Stars, Millersburg**  
 A scarce pattern, known in this goblet and water set pieces. The height of goblet is 6 inches.

**Goblets**  
 Margarid 195 (07), 350 (14)  
 Purple 90 (08), 50, 85 (07)

**Flasks**  
 Margarid 190 (01), 110 (14)

**Tumblers**  
 Margarid 400 (13), 100 (14)  
 Purple 900 (13), 500 (11)

**Nesting Swan, Millersburg**  
 Amethyst 500 (13), 500 (12)  
 Green 650 (11), 550 (12)  
 Margarid 575 (12), 600 (14)  
 One green 225, 200, 190, 175 (11)

**Nippy, upside shape**  
 Amethyst 3,700 (09)

**Nippon, Northwood**  
 Don't mistake Northwood's Nippon for Feltus's Peacock. But Nippon has a circular design in the center. The Imperial Diet of the Empress of Japan. While the Peacock's tail pattern the design continues into the center. Bowls may have either a sustenance back or the ribbon back although a few with plain backs have also been reported.

**Plates, 8 inches**  
 Amethyst/purple 480, 500 (12), 300 (14)  
 Green 525, 500 (13), 175 (14)  
 Ice blue, one known, 5,000 (07)  
 Ice green, only known, 12,000 (14)  
 Margarid 475 (13), 300, 400 (14)  
 White 11,000 (08)

Designed to be handy to use, the Field Guide is 6 x 9 inches. Within its 200 pages are listings for Carnival Glass patterns along with a photo of each pattern, a brief description, shapes found in each pattern, and prices for each shape in the colors available. Price reports are based on auction sales from the past 15 years with emphasis on the most recent years, up to and including some of 2015. This edition has 29,000 individual prices and 1,200 photographs.

**Table of Contents**  
 Classic patterns, A-Z  
 Lettered carnival  
 Vases  
 Novelties and miniatures  
 Decorated carnival  
 Lamps and shades  
 Hatpins  
 Spectacular Carnival sold at auction

**Ordering information**  
 The 2015 Field Guide may be ordered from:  
[Heart of America Carnival Glass Association](http://www.HeartofAmericaCarnivalGlassAssociation.com)

The price is \$20 for individual US shipments.



We have a passion! Join in on the fun!  
 Sign up for our Newsletter and be sure to tell a friend!  
[www.CarnivalGlassShowcase.com](http://www.CarnivalGlassShowcase.com)

**CARNIVAL GLASS SHOWCASE**  
 Where collectors gather to strut their stuff and tell their stories.