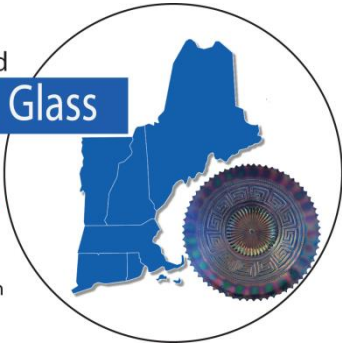


New England Carnival Glass Association

New England
Carnival Glass
Association

40th Anniversary
1975-2015

www.NECGA.com



President
Don Dorais
150 Highland Avenue
Cumberland, RI 02864
(401) 724-4874
ksd24ddd24@cox.net

Vice President
Steve Lindquist
671 Ridge Road
Wethersfield, CT 06109
(860) 257-1816
stevenandgary@cox.net

Treasurer
Gary Sullivan

**Secretary/Recording
Secretary/Bulletin Editor**
Kristine Dorais

Board of Directors
Norm Spicher Robin Brown
Anna Ketola Louie Carpick
Joanne Andrews

Webmaster: Steve Lindquist

Vol. 34, No. 4 *CARNIVAL GLASS FOREVER* *AUGUST 2015*

Meeting Highlights...Look Inside For More!

*SUNDAY,
AUG. 9th
12 Noon*



16" Thin Rib
Mid-Size Vase
in Vaseline by
Northwood

Imperial Grape
Bowls in
Green/Teal



**AUGUST MEETING IN
SOUTHBRIDGE, MA**

Show & Tell Theme
**THE COLOR "AQUA"
& NEW FINDS**

Well, by the time you receive this bulletin, Kris and I will be leaving for Tom's auction in Hagerstown, MD...Steve and Gary are also coming along for the road trip.

The summer is flying by and the September convention will be here before you know it. Complimentary banquet invitations were sent out to our charter members....Louie and Charlotte Carpick, Paul and Yvette Berube, Ben Perez and Henry and Freda Simonis. Hopefully, everyone can attend. Maybe we'll see some new faces at the convention.

Tom is bringing us some great glass to celebrate the club's 40th anniversary....so start saving your "quarters". Keep checking the website for listing and auction pictures. www.necga.com

Remember to make your hotel reservation as the cutoff for the discounted room rate is Aug. 10th!

Once again, we will need snacks for the hospitality room and mini auction items. If anyone would like to donate a piece of carnival glass for the card game, Bob Preseau would be happy to take your donation.

I also wanted to let everyone know that Tom's (Burns) mother passed away on Aug. 7th. The club sent flowers as the memorial service was in Bath, NY.

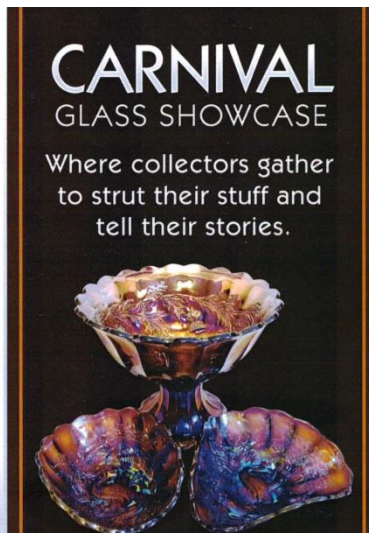
Hope to see you at the August meeting.

Sincerely,
President Don Dorais

NECGA Member
Chase Marquis, Augusta, Maine
Steve & Cynthia Linsky, Norwood, Mass.
Welcome Aboard!

NECGA Auction Sneak Preview:

- Blue Stippled G&C Punch Set
- Tree Trunk Funeral Vase in Blue
- N G&C Grape Leaves Bowl in Elec. Blue
- Lattice & Poinsettia Elec. Blue Bowl
- Dugan Heavy Web Large 8 Ruffled Two Sided Banana Bowl in PO
- Squatty Lime/Ice Green Diamond Pt. Vase
- Drapery Vase in AO
- Squatty Parlor Panels Vase in Pastel Mari.
- LGO Blackberry Spray Hat
- 7 1/2" G&C Ruffled Bowl in Elec. Blue
- Many Fruits Ruffled Punch Set in Purple & Marigold
- White Many Fruits Ruffled Punch Top
- AO Tree Trunk Vase
- 4 Pillar Ribbed Vase in AO & IGO
- Plume Panels Vase in red
- Daisy & Drape Flared Vases in AO & Dark Marigold
- Ice Green Beaded Cable Rosebowl



We have a passion! Join in on the fun!
Sign up for our Newsletter and be sure to tell a friend!

www.CarnivalGlassShowcase.com

Notes from the Sunday, June 14th meeting.

Present at the meeting: Kris & Don, Bruce & Anna, Robin & Emil Seymour, John & Vickie Rowe, Bruce and Anna and Norm, David & Sue Noyes, Louie and Charlotte Carpick. Show & Tell took place and the meeting started at 12:45 p.m..

A motion to accept the bulletin minutes...all were in favor. A motion to accept the treasury report...all were in favor.

2015 Convention:

We are still trying to get the information for the Thursday night food that we offer in the hospitality room...whether we have pizza again or order something else from the hotel.

2016 Convention:

Don is still trying to get a 2-year hotel contract finalized for 2015/2016. The meal price may go up but the room rates hopefully will stay the same.

New Business:

- Steve & Gary (they could not attend the meeting, but Kris and Don brought them) had the rack cards printed and they were handed out at the meeting to the members. Anyone can leave them at an antique shop/flea markets etc. They came out really nice and Gary and Steve did a great job on the layout.
- We need to renew our website hosting. We use Godaddy and it expires in July. Price for 1 year was \$107.88; 2 years \$215.76; 3 years \$323.64. A motion was made by John Rowe and it was seconded by Sue for Steve to purchase the 3 year package.

Meeting adjourned at 1:55 p.m.

Theme: Aqua Pieces and New Finds

Next Meeting: Sunday, Aug. 9th at noon.

Meal: Sandwiches & Cold Salads



Mid-Atlantic Carnival Glass Club Jamboree

October 22-24th 2015 Featuring the collection of Greg Dilian

Ramada Plaza Hotel 1718 Underpass Way Hagerstown, Md.

301-797-2500 A Tom Burns Auction

Contacts: Steve Grayson sgrayson@copper.net

Beth Margerum bethmargerum@comcast.net

Club membership \$10 p/yr. via email

Contact: bethmargerum@comcast.net

New England Carnival Glass Association Membership Application

Dues: \$ 18.00 per year per household. (Membership renewal is due on your anniversary date)

Name _____

Address _____

City _____ State _____ Zip Code _____

Telephone # _____ - _____ Email address: _____

Send application form and dues (U.S. funds) to: Gary Sullivan, 671 Ridge Road, Wethersfield, CT 06109

Membership includes, bi-monthly meetings, bulletins and all functions and outings. If you would like the bulletin emailed to you (vs. mail), please let us know on this form.

Make checks payable to N.E.C.G.A.

Email _____ Mail _____

To pay with Paypal:

Paypal payments are accepted from anywhere in the world, but the cost is \$18 and must be in United States dollars. To pay with Paypal, go to the Paypal website and send \$18 payment to newenglandcarnivalglass@gmail.com. You must include all of your contact information, including name, mailing address and email address with your payment (in the memo section is fine).

**DON'T FORGET TO MAKE YOUR HOTEL ROOM RESERVATIONS.
TO RECEIVE THE DISCOUNTED RATE, THE DEADLINE IS AUG. 10th.**

SHOW & TELL...50 shades of Green



Northwood's
Singing Birds
Butter Dish in
Green



Fenton's Holly Plate in Green
Northwood's Greek Key Bowl



Vintage Compote by Fenton

Paneled Dandelion Tumbler
Orange Tree Mug in Vaseline



Ice Green Opal Leaf and Beads Rosebowl

New England Carnival Glass Association Convention 2015 - September 10-12 Doubletree by Hilton-Leominster, Mass.

Call for Reservations 1-978-534-9000

Call for discounted room rate of \$97 plus tax per night before Aug. 10th

Register under New England Carnival Glass Association

Banquet Dinner: Fri., Sept. 11

Auction: Sat., Sept. 12

Convention Schedule

Thursday night ... Pizza Party 6:00 p.m.

Friday... Seminar #1: 2:00-3:00 p.m...bring your piece of glass to
Stump Tom Burns

Banquet 6:00 p.m.

Guest Speakers: **Tom & Sandy Monoski ...Aunt Helen's
Bookmarks and Memories**

Followed by Mini Auction

Saturday... Seminar #2: 11:15 a.m.-Noon...**Gary Sullivan & Steve
Lindquist...Northwood's Grape & Cable**

Auction Preview: 1:30 p.m. to 3:00 p.m.

Tom Burns Auction begins 3:00 p.m.

Call Don
Dorais
with
questions
401-
724-4874

Visit Brimfield...the largest Outdoor

Antiques event in New England from Sept. 8-13

6,000 dealers on hand - 60 minutes from hotel

AUCTION TEASERS: Amethyst Tree Trunk Funeral Vase, Blackberry
Open Edge Whimsey Vase and Plate in Marigold, April Showers Vase in Amethyst
Opal, Pumpkin Pumpkin Flared Daisy & Drape Vase...**PICTURES OF THE GLASS
WILL BE PLACED ON THE WEBSITE. KEEP CHECKING.... www.necga.com**

The banquet buffet meal is \$30 a person. Plated meal: Chicken **OR** Beef
(similar to last year). Please let Gary know your choice.

Send your payment by August 10th to: Gary Sullivan

671 Ridge Road, Wethersfield, CT 06109

calendar Listings for 2015

July 31/Aug. 1., 2015 – Tom Burns Auction

Ramada Plaza Hotel, 1718 Underpass Way, Hagerstown, MD – (301) 797-2500

August 19-22, 2015 – [WWW.CGA](#) Annual Convention - Jim Wroda Auction

Best Western Airport Inn and Conference Center, 6815 W Kellogg (US 54), Wichita, KS, 67209 Phone: (316) 942-5600

Sept. 10-12, 2015

New England Carnival Glass Convention and Auction, Tom Burns Auction, Doubletree by Hilton, 99 Erdman Way, Leominster, Mass. (978) 534-9000

October 7-9, 2015

Air Capital Carnival Glass Convention and Online Auction, Best Western Airport Inn & Conference Center, 6815 W. Kellogg, Wichita, KS. Res: 1-888-942-5666 or 1-316-942-5600. Jim Seeck Auction.

October 9-10, 2015

Millersburg Glass Association Fall Gathering, Millersburg, OH, Jim Wroda Auction.

October 22-24, 2015

Mid-Atlantic Carnival Glass Jamboree and Auction, Ramada Plaza Hotel, 1718 Underpass Way, Hagerstown, MD. Res: 1-301-797-2500, Tom Burns Auction.

November 5, 2015

NECGA				NECGA			
Treasury Report				Convention Report			
For the period January 1, 2015 thru July 20, 2015				2015			
Opening Balance - January 1, 2015		\$6,893.45					
Revenues:				Convention Revenue:			
Dues		468.00		Banquet Meals		150.00	
Fees		150.00		Mini Auction		0.00	
Convention		(450.00)		Card Game/Donations		0.00	
Other		0.00		Tom Burns - Auction		0.00	
Total Revenue		168.00		Total Convention Revenue		150.00	
Expenses:				Convention Expenses:			
Postage		83.53		Hotel Costs/Meals		600.00	
Ink/Paper/Envelopes		203.98		Guest Speaker Fee		0.00	
Supplies		0.00		Pizza Party		0.00	
Web site		0.00		Room Display Awards		0.00	
Hall Rental		270.00		Hospitality Room		0.00	
Paypal Fees		1.64					
Rack Cards		284.98					
Other		71.97					
Total Expense		916.10		Total Convention Expenses:		600.00	
Increase /(Decrease) in Fund Balance		(748.10)					
Ending Fund Balance - July 20, 2015		\$6,145.35		Net Convention Profit / (Loss)		(\$450.00)	

Great Lakes Carnival Glass Club, Ramada Convention Center, Lansing MI. (517) 627-3211, Tom Burns Auction

THE TIME TO BUY IT... IS WHEN YOU SEE IT by Gary Sullivan



Steve and I watch American Pickers on TV... well, I watch and Steve tolerates it. Mike and Frank travel the country picking antiques; “rusty gold” as they say. Well, one of Mike’s favorite sayings is “The Time to Buy It, Is When You See It”. We should have taken him up on that advice.

Three Tampa conventions ago, we walked into a room that was selling glass, and I picked up a Dugan/Diamond Beauty Bud with Twigs vase. We have all seen hundreds of these, but this one was different, it was much taller. There wasn’t a standard size vase there to compare it to, but I knew that it was much bigger than usual. The price was \$35 and I’m sure that we could have gotten it for less if we asked. But I was unsure as I had never seen this vase this size before. So I put it down and we left the room. As we were walking the halls of the Dolphin Beach Resort, we talked a little about the vase and decided that for \$35, it was worth the risk of not knowing what it was, simply because it was so unusual. So we headed back to the room. When we walked into the room, it was gone. I couldn’t believe it, in the 30 minutes since we left, someone had bought it.

So we left and continued to visit some more rooms. One room we hadn’t visited yet was Gary Lickver’s. Walking into Gary’s room is always exciting as he has great glass, a lot of it and it is displayed and lit so well. We walked in, looked around some and then I saw it. There on the credenza behind the television was tucked the vase we wanted to buy. Gary Lickver! He had beaten us once again.

So that brings us to 2015, April in Kansas City at the HOACGA convention. We walk into Gary’s room and I see the large size Beauty Bud with Twigs vase. I pick it up and Gary comes over to talk to us. He says that he has only seen four or five of these in all his travels. I told him, I knew where he bought it and we laughed at our story. I offered him a fair price and Gary agreed to it. So three years later, we finally went home with the vase.

So the time to buy something is the time you see it, because if you don’t Gary Lickver will.

The photo shows the large size Beauty Bud with Twigs vase on the far left. It is 12 inches tall and its base is $2 \frac{7}{8}$ inches. Next to it is the standard sized Beauty Bud with Twigs vase. It is 9 inches tall and its base is $2 \frac{3}{8}$ inches. In the center is the Beauty Bud vase without twigs. It is $8 \frac{1}{4}$ inches tall and its base is $2 \frac{1}{4}$ inches. The two vases on the right are part on Don and Kris’s collection and are called “Twigs” vases, also by Dugan. Their height depends on how the top edge is formed and their base is $2 \frac{1}{16}$ inches. On Don and Kris’s two Twigs vases, there is a bark texture on the top surface of the base that extends all the way down to the edge. The Beauty Bud vase without twigs has no texture and both Beauty Bud with Twigs vases have this bark texture, but it stops short of the edge, so there is a smooth surface on the outer edge of the base.

NEW FINDS

Hi There...On June 27th, a Saturday afternoon with nothing to do, Jocelyne and I decided to go to an antique store in Alexandria, Ontario about an hour away from home. We hopped in the car on this beautiful day, and on the way, stopped at a few garage and yard sales. When we arrived in Alexandria the antique store was closed, so on the way home we stopped at a store called The Glassblowing Place and Gift Boutique on the main street in Alexandria. Out front was a sign with antiques for sale and they had a few pieces of old furniture there. As we walked in the front door there was glass cabinets full of colored hand crafted blown glass and on one of the shelves was a carnival glass Green Rustic Small Vase. Of course, I picked it up to look at and also to check the bottom in case it was slag glass or maybe have a penny on the bottom. I always pick up a vase when I see one and everyone should even



if you have the vase already because you never know what you'll find underneath it. But it

was just plain green and the color was a bit silvery, nothing special.

Jocelyne came over to me and told me there was carnival glass bowl in a glass table top cabinet on the other side of the store along with a marigold vase. As I checked out the cabinet I knew what I was looking at right away.....It was an opal piece with a BEAUTIFUL butterscotch overlay with the FANCY interior.....YES it was a Fine Cut and Roses Candy Dish in Aqua Opal by Northwood. They had a price tag on it but I could not see the whole thing just a two and a five, so I thought it had to be two hundred and fifty ??? I asked the sales lady to see the piece so she took it out of the glass table top cabinet and started to tell me it was carnival glass and it was old. So me playing along



as usual, I asked her what it was and who made it ... She told me it was a footed dish and didn't know the maker but knew they made a lot of carnival glass around the FIFTIES!!!! SOOO I looked it over closely and it was in PRISTINE condition...What great color and iridescence...Now, I could see the price tag and it was \$25. Not \$250. Of course as any carnival glass collector would do I asked her if she could do better on the price... Then she said, "make me an offer", so I said "Would you be offended if I offered you \$18?" She said, " No, I'll take the eighteen". I said, " Sold" and she started wrapping it up for me.

Now before I end this story, let me tell you a little bit about this beautiful piece of carnival glass. It's made by Northwood and is named Finecut and Roses Ruffled Candy Dish in Aqua Opalescent with a butterscotch overlay and it has the embroidered design inside called Northwood's FANCY. Harry Northwood purchased this mold from the Jefferson Glass Company around 1908, and in 1909, they started production in carnival for about five years. Finecut and Roses is found in two shapes....a footed rose bowl and a ruffled candy dish... both are made from the same mold, and yes, there are a few whimsies out thereSome have the plain interior and others the fancy

interior with the fancy bringing higher prices. Now back to my story, EH!!!! After she wrapped my new find, I asked her where she gets her carnival glass from ? She told me she picks them up at yard sales and garage sales and she gets them quite often. So I told her I'd be back more OFTEN.... and thanked her again.

As I said before "Carnival Glass People Are The Best " .. What a great find and a GREAT PRICE..... I hope you enjoyed the story and the pictures. Jocelyne and I will see you all in September...

Your carnival friends, Brian and Jocelyne

P.S. I'd thought I'd put a picture in of the rosebowl and the candy dish made from the same mold. Also, they made a Finecut and Roses Variant that has no collar base between the feet and a smooth interior and does not have the Northwood trademark on it.



CARNIVAL GLASS WAS AT PRE-1900 OKTOBERFEST by Greg Dilian

Surprisingly, the Germans may have been drinking from Carnival Glass tankards and steins prior to 1900! What a great way to celebrate Oktoberfest!

What I want to write about is the vessels that held the amber grog. First, we have the lidded tankard



pitcher. It is actually shown in the 12th Edition of the Standard Encyclopedia of Carnival Glass by Mike Carwile. Mike calls it 'Floral and Melon Rib'. The pitcher has matching tumblers but I have never seen them. It is 13" in height and has a pewter lid with an eagle finial. It was made of blown glass as it has a polished pontil. It is hand painted around the middle with a very intricate design of leaves and some sort of berries and a sprig of wheat at each side. It has German writing that I think says "Auf, singet und trinket". That translates to "Let's sing and drink",

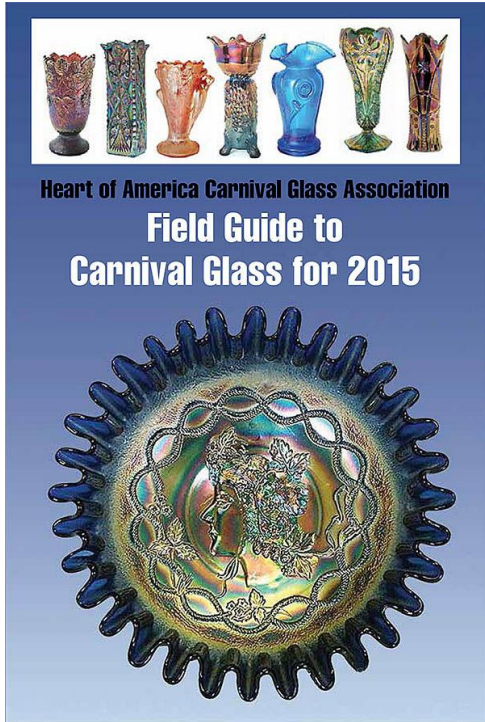
according to my German friend. It has a nice flashy marigold iridescent finish similar to the iridescence on some Mary Gregory items. I found this very early one morning at Brimfield.

The two lidded steins are similar in shape. Like the tankard, both have similar enameled leaves, berries and wheat. Both have polished pontils and pewter lids with plume-like lid openers. One is a dark, strong marigold with a faceted glass finial that is marigold, as well. The other is a flashed marigold with a pewter acorn finial. They are both marked 1/2L which means they hold ½ of a liter. The writing on them translates (roughly) to say, "For your wedding day" and the other "For Souvenir" on Google translate.



In Carwile's book, similar steins are pictured under 'German steins' and one is marked 'Stuttgart 1892'. So, these were made way before Carnival Glass in the U.S.

The HOACGA Field Guide to Carnival Glass for 2015



Heart of America Carnival Glass Association
**Field Guide to
 Carnival Glass for 2015**

84		HOACGA Field Guide to Carnival Glass		85	
Mirrored lobes Marigold 200 (07), 300 (08) White 150, 250 (13), 100 (12)	Open sugar or cognac Marigold 45 (03), 100 (07)	Multi-Fruits and Flowers, Millersburg Marigold 145 (13)	Multi-Fruits and Flowers, Millersburg Marigold 145 (13)	Neutulis, Northwood/Dugan Marigold 145 (13)	Near Cut, Northwood Marigold 145 (13)
Mirrored Diamonds and Plates Marigold 145 (13)	Boobies (covered dish) Marigold, small lid chip, 290 (09), 160 (12)	Bowls, ruffled, 9-11 inches Marigold 20-30	Sailed bowl, 8-inch, dome footed Marigold 75 (12)	Fruit bowl, wild base Marigold 175 (08), 200 (13)	Cordial set (decanter, 8 cordials, tray) Marigold 1,050 (12)
Moller, Eda Marigold 200 (13)	Decanter with stopper Marigold 91 (03/02)	Decanter, 2 wine glasses Marigold 225 (14)	Wine Glass Marigold 70 (02)	Castleschick, 8 1/2 inches Marigold, pair 400 (12), 240 (14) Marigold, single 100 (08)	Vases, see Vine section
Mooprunt, Brockwitz Marigold 650 (04), 225 (11) Marigold, pair ind., 300 (10)	Water pitchers Amethyst 2,000 (11), 2,100 (13) Amethyst, tall shape, 2,300 (10) Amethyst, 6 pieces, 1,500 (07)	Water pitchers Amethyst 11,000 (04), 15,000 (13) Green 11,000 (04) Marigold 14,000 (04)	Teapots Amethyst 1,850 (08), 900 (10) Green 1,800 (07), 1,400 (10) Marigold 700, 2,300 (02) Marigold 1,100 (13)	Teapots Amethyst 1,850 (08), 900 (10) Green 1,800 (07), 1,400 (10) Marigold 700, 2,300 (02) Marigold 1,100 (13)	Teapots Amethyst 1,850 (08), 900 (10) Green 1,800 (07), 1,400 (10) Marigold 700, 2,300 (02) Marigold 1,100 (13)
Water pitchers Amethyst 2,000 (11), 2,100 (13) Amethyst, tall shape, 2,300 (10) Amethyst, 6 pieces, 1,500 (07)	Water pitchers Amethyst 11,000 (04), 15,000 (13) Green 11,000 (04) Marigold 14,000 (04)	Teapots Amethyst 1,850 (08), 900 (10) Green 1,800 (07), 1,400 (10) Marigold 700, 2,300 (02) Marigold 1,100 (13)	Teapots Amethyst 1,850 (08), 900 (10) Green 1,800 (07), 1,400 (10) Marigold 700, 2,300 (02) Marigold 1,100 (13)	Teapots Amethyst 1,850 (08), 900 (10) Green 1,800 (07), 1,400 (10) Marigold 700, 2,300 (02) Marigold 1,100 (13)	Teapots Amethyst 1,850 (08), 900 (10) Green 1,800 (07), 1,400 (10) Marigold 700, 2,300 (02) Marigold 1,100 (13)
Water pitchers Amethyst 2,000 (11), 2,100 (13) Amethyst, tall shape, 2,300 (10) Amethyst, 6 pieces, 1,500 (07)	Water pitchers Amethyst 11,000 (04), 15,000 (13) Green 11,000 (04) Marigold 14,000 (04)	Teapots Amethyst 1,850 (08), 900 (10) Green 1,800 (07), 1,400 (10) Marigold 700, 2,300 (02) Marigold 1,100 (13)	Teapots Amethyst 1,850 (08), 900 (10) Green 1,800 (07), 1,400 (10) Marigold 700, 2,300 (02) Marigold 1,100 (13)	Teapots Amethyst 1,850 (08), 900 (10) Green 1,800 (07), 1,400 (10) Marigold 700, 2,300 (02) Marigold 1,100 (13)	Teapots Amethyst 1,850 (08), 900 (10) Green 1,800 (07), 1,400 (10) Marigold 700, 2,300 (02) Marigold 1,100 (13)
Water pitchers Amethyst 2,000 (11), 2,100 (13) Amethyst, tall shape, 2,300 (10) Amethyst, 6 pieces, 1,500 (07)	Water pitchers Amethyst 11,000 (04), 15,000 (13) Green 11,000 (04) Marigold 14,000 (04)	Teapots Amethyst 1,850 (08), 900 (10) Green 1,800 (07), 1,400 (10) Marigold 700, 2,300 (02) Marigold 1,100 (13)	Teapots Amethyst 1,850 (08), 900 (10) Green 1,800 (07), 1,400 (10) Marigold 700, 2,300 (02) Marigold 1,100 (13)	Teapots Amethyst 1,850 (08), 900 (10) Green 1,800 (07), 1,400 (10) Marigold 700, 2,300 (02) Marigold 1,100 (13)	Teapots Amethyst 1,850 (08), 900 (10) Green 1,800 (07), 1,400 (10) Marigold 700, 2,300 (02) Marigold 1,100 (13)
Water pitchers Amethyst 2,000 (11), 2,100 (13) Amethyst, tall shape, 2,300 (10) Amethyst, 6 pieces, 1,500 (07)	Water pitchers Amethyst 11,000 (04), 15,000 (13) Green 11,000 (04) Marigold 14,000 (04)	Teapots Amethyst 1,850 (08), 900 (10) Green 1,800 (07), 1,400 (10) Marigold 700, 2,300 (02) Marigold 1,100 (13)	Teapots Amethyst 1,850 (08), 900 (10) Green 1,800 (07), 1,400 (10) Marigold 700, 2,300 (02) Marigold 1,100 (13)	Teapots Amethyst 1,850 (08), 900 (10) Green 1,800 (07), 1,400 (10) Marigold 700, 2,300 (02) Marigold 1,100 (13)	Teapots Amethyst 1,850 (08), 900 (10) Green 1,800 (07), 1,400 (10) Marigold 700, 2,300 (02) Marigold 1,100 (13)

Designed to be handy to use, the Field Guide is 6 x 9 inches. Within its 200 pages are listings for Carnival Glass patterns along with a photo of each pattern, a brief description, shapes found in each pattern, and prices for each shape in the colors available. Price reports are based on auction sales from the past 15 years with emphasis on the most recent years, up to and including some of 2015. This edition has 29,000 individual prices and 1,200 photographs.

- Table of Contents**
 Classic patterns, A-Z
 Lettered carnival
 Vases
 Novelties and miniatures
 Decorated carnival
 Lamps and shades
 Hatpins
 Spectacular Carnival sold at auction

Ordering information
 The 2015 Field Guide may be ordered from:
[Heart of America Carnival Glass Association](http://www.HeartofAmericaCarnivalGlass.com)

The price is \$20 for individual US shipments.

www.CarnivalGlass.com

44 YEARS OF SATISFIED MAIL-ORDER CUSTOMERS
 UPDATES EVERY TWO WEEKS—CARNIVAL GLASS IN MINT CONDITION

Lloyd R. Ward
 P.O. Box 1006, Mayfield, KY 42066
 Tel: (270) 251-2005 • Cell: (270) 970-0599
 E-Mail: lrward@carnivalglass.com

**Thinking of Selling Your Collection?
 Turn Your Carnival Glass into Cash!**

I buy one piece, 20 pieces, or a collection of Carnival

Visit www.CarnivalGlass.com—
 THE Place for Carnival Glass!

