

# New England Carnival Glass Association



New England  
**Carnival Glass**

Association

40th Anniversary  
1975-2015

www.NECGA.com

## President

Don Dorais  
150 Highland Avenue  
Cumberland, RI 02864  
(401) 724-4874  
[ksd24ddd24@cox.net](mailto:ksd24ddd24@cox.net)

## Vice President

Steve Lindquist  
671 Ridge Road  
Wethersfield, CT 06109  
(860) 257-1816  
[stevenandgary@cox.net](mailto:stevenandgary@cox.net)

## Treasurer

Gary Sullivan

## Secretary/Recording Secretary/Bulletin Editor

Kristine Dorais

## Board of Directors

Norm Spicher      Harold March  
Anna Ketola      Bob Preseau  
Joanne Andrews

**Webmaster:** Steve Lindquist

\*\*\*\*\*  
Vol. 34, No. 6                                      CARNIVAL GLASS FOREVER                                      DECEMBER 2015  
\*\*\*\*\*

## Meeting Highlights...Look Inside For More!



Millersburg's Blackberry Wreath  
"3 in 1" Edge in Green

Fenton's Coinspot Bowl in Cherry Red with the  
Brackett Edge

**SUNDAY,  
DEC. 6<sup>TH</sup>  
12 NOON**



## Show & Tell Theme

**DECEMBER MEETING  
IN  
SOUTHBRIDGE, MA**

**HOLIDAY THEMES  
& NEW FINDS**



# The President's Newsletter

Time is flying... Thanksgiving and the Holiday season are right around the corner.

We had an educational meeting (learning about carnival edges and shapes) in October with a nice surprise...we met Janet Haddock from Newburyport, who found out about our club through the Internet/our website. Janet enjoyed herself, however, a bit overwhelmed with all the glass she saw...i.e. colors, shapes, new, vs. old, etc. Hopefully, we didn't scare her away and she joins our club.

As stated in my last letter, Kris and I were flying out to Cleveland to attend the Millersburg auction for the first time. Once we landed, we drove an additional 1600 miles in 5 days through the northeastern part of Ohio, all the way to Allentown, PA. We went to every antique shop we could find and went to 2 additional auctions while we were out there. We saw hundreds of pieces of glass, but Kris and I came to the conclusion that the shops all know what they have – we didn't have to look up the pattern...it was already on the tag! We were on the hunt for Millersburg Frosted Hobstar & Feather pieces for our friend, Bob Preseau and only saw the pattern in 2 shops. In fact, the piece we found for him, he didn't have in his collection, so we were happy and he was thrilled.



We visited the Millersburg Museum and read about Lola Johnson's pipe humidor. The glass at the museum was amazing. We stayed overnight in Millersburg at the Millersburg Hotel and attended the auction the next morning where we met Brian and Jocelyne. They introduced us to Ray Miller, and, of course, Jocelyne was on "cloud nine" with her recent



purchase (see her article included in this bulletin). Did I tell you that Lola attended the auction, so we were able to meet her. The auction went well and we did bring home a souvenir. The facility where the auction was held was very nice and the owner also owned the furniture store across the street...it was their 25<sup>th</sup> anniversary. Here is a picture showing how they celebrated the milestone, along with an Amish horse and buggy driving by. Oh, and did we tell you, we saw the People's Vase in Blue. Wow! Wow! Wow!



Millersburg Glass  
on loan from  
members of the  
**Millersburg Glass  
Association**



We left the auction to travel to another 2 auctions,

driving MORE miles. At one point, we were closer to home and easier to simply drive home, but we had to travel back to Cleveland. Oh, well!

So at the 2<sup>nd</sup> auction, luckily we met up with Doug and Sue Siska because we bought a bunch of glass and there was no way we were flying back with it on the plane. They were kind enough to lend us a bin with diapers, and we filled it! We had plans to drive to Hagerstown in two weeks, so we made plans to pick it up then. Problem solved!

Oh, we also visited the Hershberger Antique Mall on Friday night...luckily they were open until 8:00 p.m. because we had gone to eat and then took a ride to the shop. Did I tell you how awestruck we were. There was so much glass to see. We spent a couple of hours just looking around before we made our decision to bring home a few more "souvenirs". What a way to end the day!

All in all, a great time. We are planning to take our "new finds" to the December meeting. Hope to see you there.

Sincerely,

President Donnie & Kris

P.S. Congrats to our two newly elected board of directors, Bob Preseau and Harold March.

**Tampa Bay Carnival Glass Club Convention** February 10 – February 13, 2016

The Dolphin Beach Resort, 4900 Gulf Blvd. – St. Pete Beach, FL, 800-237-8916 or 727-360-7011

Tom Burns Auction, <http://www.tbccg.com/convention.html>

**Texas Carnival Glass Club Convention: March 16-19, 2016**

Wyndham Dallas Suites – Park Central, 7800 Alpha Rd, Dallas, TX 75240

Room reservations: 972-233-7600 (option 2)

Visit our website for more information: [www.texascarnivalglass.com/convention](http://www.texascarnivalglass.com/convention)

**Heart of America Carnival Glass Convention, April 20 – 24, 2016**

Embassy Suites Airport, Kansas City, MO 816-891-7788. Burns Auction: Galen and Kathi Johnson

Contact: Bob Grissom – [bgrsm31@comcast.net](mailto:bgrsm31@comcast.net)

**Lincoln Lands Convention, June 2-4, 2016 at Milwaukee's Best Western Airport. Their website is**

[www.LLCCG.org](http://www.LLCCG.org)

Notes from the Sunday, Oct. 18<sup>th</sup> meeting.

Present at the meeting: Kris & Don, Dave & Sue Noyes, Paul Berube, Gary & Steve, Ben Perez, Robin & Emile, Louie and Charlotte Carpick (guest Janet Haddock). Show & Tell took place and the meeting started at 1:35 p.m..

A motion to accept the bulletin minutes...all were in favor. A motion to accept the treasury report...all were in favor.

2016 Convention:

- Preliminary plans are coming along.
- Convention 2015 recap....all good.
- The club can send in the \$600 deposit check for 2016 when needed.

New Business:

- 2 board of directors, Robin and Louie were coming off the board. The new board members elected were Bob Preseau and Harold March....Congrats!
- The Spring Fling will be either April 16-17 or April 23-24. Robin will call the hotel to see what weekend is available for us in Wells, Maine.

Meeting adjourned at 2:00 p.m.

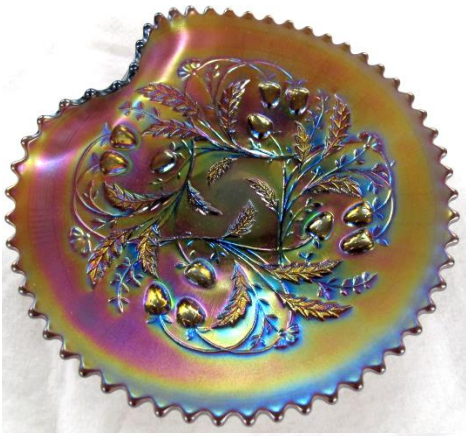
Theme: Holiday Theme and New Finds

Next Meeting: Sunday, Dec. 6<sup>th</sup> at noon.

Meal: Pizza & Antipasto



# SHOW & TELL... EDGES



Northwood's  
Strawberry  
Single  
Handgrip Plate  
in Amethyst

Fenton's  
Peacock Tail  
Square Bowl in  
Green



Dugan's  
Raindrops  
in Peach  
Opal 3 & 1  
Edge

Fenton's  
Blackberry  
Banded  
Ruffled Hat  
Marigold  
over  
Moonstone



US Glass Cosmos & Cane in Spittoon, Square and  
Tulip  
Dugan's Amaryllis Plate and Tri-Corner Compote



Petal & Fan  
Tight Crimped  
Edge Plate

Fenton's Scroll  
Embossed:  
Round and  
Ruffled  
Compotes

Two Row Open Edge Basked in  
Reverse Amberina Opal





# A SPECTACULAR TRIP TO MILLERSBURG !...by Jocelyne Grainger

I want to begin by saying that this is my 1st newsletter and I hope not to disappoint anyone with my story. Brian and I thought that our trip last year was memorable, but when we returned again this year, we found this trip back to Millersburg was PHENOMENAL!

We started our 5 day journey with a stay-over at the Wroda's in Ashville, NY, where we stayed at their beautiful home with the breathtaking backyard view of Lake Chautauqua. We all went out to Guppy's for some drinks and to try their delicious mussels and some other yummy stuff. When we returned to Jim and Laurie's home, we stayed up

reminiscing about carnival glass and stuff and then headed to bed. We did also have a chance to visit a few antique shops in Westfield and Lakewood and found a few pieces of glass.

The next day after breakfast, we headed for Millersburg, Ohio and stopped at the Medina Antique Mall... what great antiques and carnival glass also. We then proceeded to downtown Millersburg and stopped at the local restaurant BAGS for a few cold ones, when 10 minutes later, Bo & Randy Jones and Ray Miller joined us for some more cold ones and munchies. What a great surprise !! We talked, laughed and then headed over to the Jones home in Holmesville, which we were invited to stay for the remainder of our trip. WOW!!! What a beautiful home they have and let's not forget that beautiful glass. AMAZING!! That evening Bo & Randy had an open house for the members and what a spread they had for everyone to enjoy...the sangria was delish and the host and hostess were right up there... Exceptional! We got to talk to some old friends and made some new ones also, what a great evening.

The following day after breakfast, we were chauffeured by the Jones, shown the surroundings of this beautiful part of Ohio. We visited the Hershberger Antique Mall and saw beautiful antiques and lots of remarkable pieces of Millersburg glass. We then visited with Ray Miller and his family, and, of course, his glass and that is when I saw that Dream Piece that I saw and licked last year at his humble abode...THAT BEAUTIFUL EXQUISITE DREAMY HEAVENLY ROSE COLUMN VASE. I asked him if my DNA was still on it and he answered me, YES! and



you can take it home with you if you want it. That is when I was in a daze just thinking about owning it and bringing it home. I looked at Brian, took it outside, spoke to it and licked a few more roses before I returned it. I couldn't stop thinking about it and Brian and Ray knew it. It must of been the look on my face, because we did strike a deal, and it did end up in my arms, and it was finally coming home with me to Canada. YIPPEE!!!! That evening, we went to Millersburg Hotel for the gathering where we enjoyed some great food which was offered to everyone, met some more great old and new friends and heard some great stories. We then returned to the Jones's still on CLOUD NINE, looked at my dreamy vase, and hugged it before putting it away only because I don't handle glass when I have had a few drinks which is what we did before retiring for the big day tomorrow. The following day is the auction and that is what it is all about, glass, glass and more beautiful glass. Today is actually Brian's day since I still have a hard time concentrating on anything else but that vase of mine. This Gardens of Homestead Activity Center was a great and superb place to hold the auction. Jim supplied everyone with coffee, drinks, breakfast sandwiches and great service indeed. There was a great attendance and we even had our president Don and his wife Kris Dorais of the NECGA which they flew in from Rhode Island when we enticed them to come from our visit last year. We hope to entice more people next year after they read about it in this newsletter and by more stories. At the auction, Brian managed to get a few pieces of beautiful glass and he did buy his first piece of Hobstar and Feather...an applesauce bowl in Crystal and his first piece of a Hobnail Spittoon.

What marvelous pieces we did get and bringing back home to Ontario, Canada. EH!!

After the auction, Ray Miller, Brian and I dropped in at Lola and Jack Johnson's home to see their stupendous collection of Millersburg glass including their great vaseline collection as well. WOW !!!!! again.

On our way back to Bo & Randy's home, we stopped in downtown Millersburg where they still had the Antique Fest and there we saw some more carnival glass and some familiar faces. Now, we are heading back to Holmesville for the rest of our journey. Jim & Laurie Wroda, Bo & Randy and us sat outside under their beautifully decorated gazebo with the fireplace started. There, we finished our day with drinks, pizza and of course, talking about carnival glass, the great times, the beautiful breathtaking views of this part of the world where there are a lot of great people like Bo and Randy that graciously invited us into their amazing and beautiful home. Thanks Bo & Randy, we are so fortunate to have friends like you two.

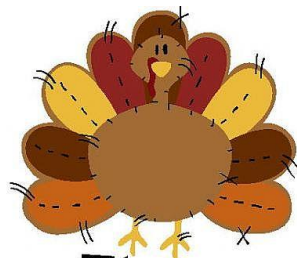
We were sad to leave the next day for our 11 hr. drive back home but the only good thing is that we are bringing home several fantastic pieces of glass and of course my HEAVENLY, ENTRANCING, EXCEPTIONAL ROSE COLUMN VASE that I got from my great friend RAY Miller. Thanks Ray from the bottom of my heart. I will Love it forever and ever.....especially because it came from your home to mine.

To all of our friends we leave behind from this journey.....until next year ....can't wait....

As Brian always says CARNIVAL GLASS PEOPLE ARE THE BEST !!!!!!! EH!!!

Jocelyne

Kris Dorais has added....she will be bringing her HEAVENLY, ENTRANCING, EXCEPTIONAL ROSE COLUMN VASE to the Spring Fling for all to see. So, make your reservations in April and maybe she'll let you lick a rose!



Happy Thanksgiving





Marigold  
Pipe Humidor

When Donnie and I traveled to Millersburg in October and visited the Millersburg Museum, I was so touched by this story, and after meeting the author of this article at the auction, the lovely Lola Johnson, I wanted to share it with you all...Kris Dorais

## **Basement Find by Lola Johnson, Millersburg, OH**

Nineteen years ago, I was preparing to auction off the house I grew up in, along with its contents. The memories of my childhood there were many. My brothers decided that they didn't want any items from the house. Before loading the items for auction, I went through the house one more time. With each room having its own special memories, I recalled that the kitchen sink was where mom always shampooed her hair. It was a freestanding double porcelain fixture with metal drawers and cabinets. The one thing I spotted

on top of the sink was mom's curler jar. I remember her always wrapping her hair in the metal and rubber curlers before going off to bed. Of course, this was one of the items that I wrapped up and put into my box of memories, which also included pictures and old cigarette lighters that no longer worked.

Once I arrived home, I took the box to the basement and placed it under the stairs in a closet and never thought of it again...that is until last June. In June of 2012, my husband Jack and I decided to clean out the closet under the stairs. Way at the back of the closet was the box of mom's things that I had placed there nineteen years earlier.

I began going through the box checking out the pictures, as well as, the other items when I came across the curler jar wrapped in newspaper. I forgot that I had even saved it. As I unwrapped the larger piece, I noticed that it was a piece of marigold carnival glass. I thought to myself, I should be so lucky if it was a piece of Millersburg. Ha Ha! I noticed that it had a design around the piece that appeared to be acorns. I removed the newspaper from the lid and found it in perfect condition. I believed it to be a piece of Fenton and not really too excited about the find. I wrapped it back up and placed it back in the box keeping only the pictures from the box.

I took the pictures upstairs to go through, and as I was sitting on the couch, I told Jack that I had unwrapped mom's curler jar. I began telling him about the piece and I mentioned to him that the lid had a handle on it. A light bulb finally went off in my head! I retrieved my carnival glass book and looked up the Pipe Humidor and how and behold, YES:, there it was...a Millersburg Pipe humidor in perfect condition!! No, it couldn't be, could it? I ran down the steps and grabbed the box hurrying back up the stairs to examine it further. I removed it from the newspaper and compared it to the book.

There it was, a Millersburg Pipe Humidor that had survived years of my mother using it as a curler jar. Jack kept saying, "It can't be" and I kept saying, "OH, Yes it is!!!" This was the very first time I had seen a Pipe humidor. I was shaking so badly and had Goosebumps all up and down my arms. Needless to say, I could barely speak. The excitement was like no other I had encountered in finding a Millersburg piece. My mother and I used to attend local auctions now and then; perhaps we bought it at one of those. I do know that we would not have paid more than fifty cents for it. When I packed it away nineteen years ago, I had no idea it was a piece of Millersburg Glass. What a basement find! What do you have stored away in your basement?



Here I am with Lola and Jocelyne (who also attended the Millersburg auction). It was great meeting Lola...what a great story!



## Dugan and Diamond Target Vases

By Dr. Larry Keig

Target, or Paneled Hobnail, is an uncomplicated, easily recognizable pattern. Found on the exterior of vases, its principal design elements are: (a) six vertical panels, (b) raised ribs separating the panels, (c) five up-and-down hobs on each panel, and, on most, (d) six short flames, one atop each rib. (The hobs on the Dugan swung Target differentiate it from the otherwise identical 1013-R.)

A many-rayed star is pressed into the underside of the base, number of rays positively correlated with base diameter, though that relationship is imperfect. Dugan vases, for the most part, have larger bases and more rays than the Diamond. Dugan and Diamond vases are, in most instances, also distinguishable in another significant respect: The star inside the rim on Dugan vases is flat; on the Diamond, conical.

Dugan introduced non-iridescent Target vases no later than 1907. Carnival vases were initially offered in 1909, the year the firm first produced the line. Dugan and Diamond marketed the pattern in carnival for many years, until the late twenties.

Vases made by Dugan are available in its staple colors—peach opal, non-black amethyst deep purple, oxblood, and white—and in green, a seldom seen Dugan-Diamond color. They are also known in marigold and the more exotic colors thought to be Diamond. Some colors—the staples and green—bridge the Dugan and Diamond eras.

Target vases are seen in two styles: “chunky” and “slender.” Most of the chunky are Dugan, the slender Diamond. Style is determined, as Joan Doty pointed out to me, by the number of rays on the marie in relation to base diameter and by the sheer weight of the product as well as by physical appearance. The chunky are seen in both squatty and swung versions. Nearly all the slender are swung.

### Dugan Target

Dugan’s Target vases are dimensionally substantial. Dugan Targets—with base diameters of three and five-eighth, three and three-fourth, three and seven-eighth, and three and fifteen-sixteenth inches—come in squatty and swung versions. Distinguishing between the two is no problem, even as the squatty varies in height from less than four inches to as much as seven. The easiest way to tell the difference is by the virtually infallible eye test: the squatty look chunky; the swung

appear trimmer, yet “muscular.” The squatty have “big mouths,” the swung smaller apertures.

**Squatty.** Peach opal squatty can be found as short as three and one-half inches, although most measure about six inches tall. On the shortest squatty, the uppermost hobs rest on the top edge of the vase. Marigold squatty are also available in the diminutive size. However, they are probably Diamond, as the base diameter is three and three-eighth inches in contrast to the three and three-fourth inches of the peach opal Dugan.

Peach opal and white are the most often seen of the six- to seven-inch squatty. Deep purple and oxblood are a good deal tougher to track down. The squatty marigold, surprisingly, are almost impossible to find, probably because this color was made in vastly greater quantities by Diamond than by Dugan. I know of no cobalt blue or other colors in the squatty.



Scarce oxblood squatty from Kate and Bill Lavelle's collection.

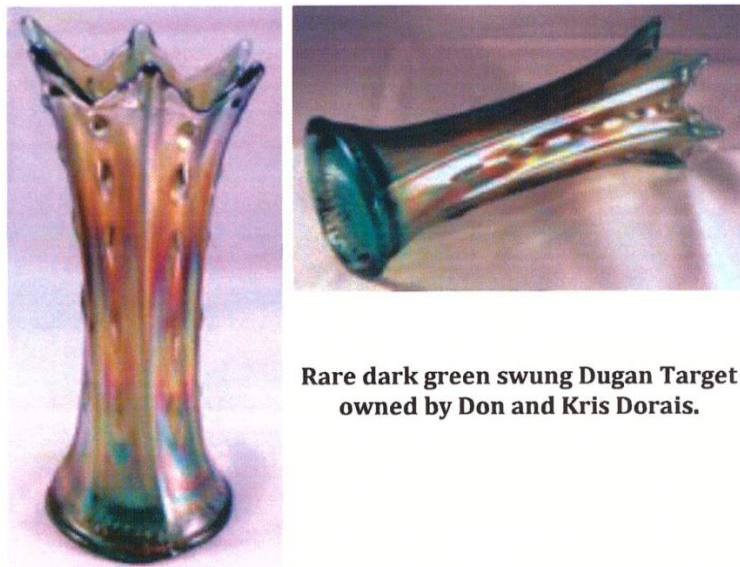
The squatty illustrated is a handsome oxblood. It displays fiery amethyst when held toward the sun. It is owned by Kate and Bill Lavelle from Illinois. Earlier this year, Samantha Prince, from Pennsylvania, sold an appealing non-oxblood deep purple by way of eBay. Its exterior iridescence is predominantly green, its interior electric blue.

The base color of Dugan’s generic amethyst is dark, ranging from virtually opaque, like Kate and Bill’s vase, to the more translucent purple Samantha sold. What contemporary collectors call amethyst is associated



with glass made after Diamond assumed ownership of the factory in 1913.

**Swung Chunky.** Swung vases produced by Dugan normally range in height from nine to twelve inches. They come in all the staples and in green and "ice lavender." Peach opal and white are the most available, purple and oxblood harder to find. The Dugan swung look more robust than the Diamond, likely because of their broader bases and greater girth.



**Rare dark green swung Dugan Target owned by Don and Kris Dorais.**

Green Target vases hardly ever surface. The base diameter of the one pictured is three and three-fourth inches. A 36-point star is pressed into the underside of the base. It is nine and three-fourth inches tall.

Don and Kris Dorais, from Rhode Island, found it in a dimly-lit barn near Bainbridge, New York, in 2005, while they were en route to a Burns auction. They bought it for \$20. I hope they don't feel like they got taken on the price.

Kevin and April Clark, from Iowa, own two green Target vases. Their Dugan green, a ten-incher with a three and three-fourth inch base and 36-point star, is a non-fluorescent lime. They bought it via eBay, where it elicited little interest and sold for a pittance. April recalls that it was filthy when it arrived and that Kevin spent a good deal of time with Dawn, Soft Scrub, a rag, and a bottle brush bringing its color to life. The Clarks don't miss much when it comes to online auctions.

Their dark green is eleven inches tall. Its relatively small, three and three-eighth inch base diameter and 30-point star suggest it was made by Diamond.

Dugan and Diamond must have had trouble stabilizing the chemical cocktail for green carnival as it has been

reported in standard, lime, and, in other vases, olive. These firms surely did not set out to make three shades of green.

The Clarks most recent find, acquired this summer at the ICGA convention, is an eleven-inch ice lavender. Because it has a three and three-fourth inch base and a 36-point star, it is likely Dugan rather than Diamond. How the color came into being is a mystery.

Its lavender base is very light, the iridescence predominantly pastel pinks and blues and evenly dispersed. The color reminds me of pastel lavender Constellation compotes, though the vase is lighter yet—see Carnival Glass 101:

[http://www.carnivalheaven.com/carnivalglass106/id67.htm#constellation\\_compote\\_in\\_scarce](http://www.carnivalheaven.com/carnivalglass106/id67.htm#constellation_compote_in_scarce)



**Highly unusual "ice lavender" swung, a recent find of Kevin and April Clark.**

## **Diamond Target**

Compared to the well-built Dugan, Diamond Target vases look scrawny. Their bases are small, their bodies slim.

Their bases ordinarily measure three and one-eighth, three and one-fourth, three and three-eighth, or three and one-half inches in diameter. Almost all are swung, the majority ten to eleven inches tall, though some are an inch or two taller. The shorter they stand, the more highly raised and prominent the hobs. On the tallest, the hobs look like teardrops rather than hobs and the ribs are flatter. They have varying numbers of rays on the underside of the base, and the star itself is in the shape of a cone.

Made over a span of 15-plus years, the Diamond marigold are plentiful. While they can be nicely



colored, many are dull or washed out in appearance. Though phased out of production by the mid to late teens, the peach opal are also available in large numbers. The most desirable of these have abundant opalescence on hobs, ribs, and tops. The slender Diamond white are seen less often than the chunky Dugan. Diamond's amethyst, with a base color that is lighter than Dugan's, are not hard to come by, but finding them with great color can be challenging. Horehound and cobalt blue are seen less often.

In the late teens and early twenties, Diamond produced a wave of uncommon carnival colors, three of which have been confirmed in Target. These colors may have been experimental, as examples are few and far between.

A vaseline opal, with marigold overlay, sold on the McKenna auction, conducted by Tom Burns in 1996, for \$400. With opalescence confined to the top edge, not on hobs or ribs, it stands eleven and one-fourth inches tall. The base diameter is three and three-eighth inches. The star on the underside of the base has 30 points.

The vaseline opal in the Fry collection, as Diane noted, glows under a black light which distinguishes it from the non-fluorescing lime green. It is pictured in Carl O. Burns' *Dugan & Diamond Carnival Glass*, where it is identified as vaseline rather than vaseline opal, and at the Carnival Glass 101 website.



First-reported amber, a swung vase owned by the Clarks.

The illustrated amber Target, owned by Kevin and April Clark, is the first reported in this scarce Diamond color. It is 12 inches tall. The base, with a 24-point star pressed into its underside, is three and one-half inches in diameter.

According to Carl Burns, Diamond produced its amber during a narrow span of years, probably from 1922 to 1925. In shade, it closely resembles the amber made by Imperial in much greater quantities and in far more patterns.

Kevin and April have indicated that an amethyst opalescent, with opal on the tips of flames, was sold by Seeck Auctions a few years back. I have not been able to locate it but would like to know its whereabouts. Dugan or, more likely, Diamond produced little amethyst opal in any pattern.

Sadly, no Target vases have been reported in celeste, sapphire, or ice blue.

### Anomalous Dugan and Diamond Target

Not all Dugan and Diamond Target vases "fit the mold." Here are two of them.



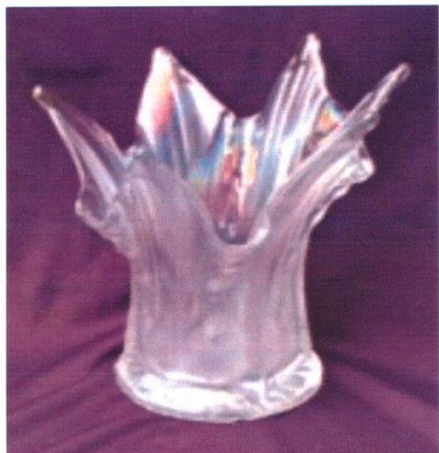
A "chunky" amethyst with Diamond's domed base from Neal and Sue Becker's collection.

The illustrated eleven and one-half inch amethyst has the largest reported Target base diameter: three and fifteen-sixteenth inches. It has a 36-point star embedded in the underside of the base. A vase that otherwise would be thought of as Dugan, it has the Diamond coned star rather than the Dugan flat. As Neal Becker, the owner, has observed: "The domed area starts where the star shape begins. It indents a full three-fourth of an inch." Thus, Diamond in all likelihood produced limited numbers of chunky vases as well as its trademark slender.

Workers at the plant must have enjoyed their play time. Every now and then, a Dugan or Diamond vase surfaces with longer than normal flames or uniquely shaped tops. The squatty white vase shown, from the

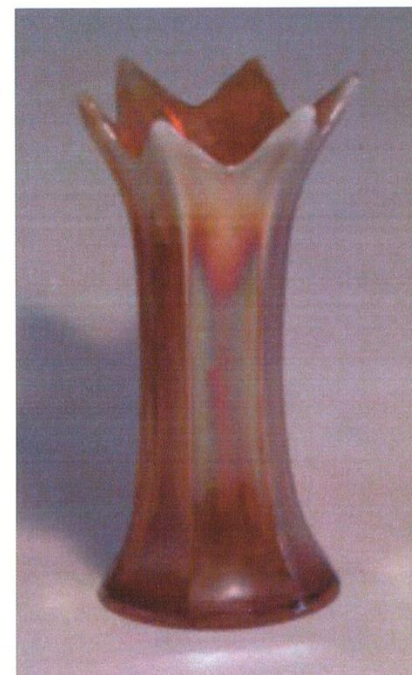


Clarks' collection, has flames that have been greatly elongated: two and one-half to three inches in contrast to one to one and one-half inches on typical Targets. (Lined Lattice vases have also been seen with long thin flames.)



**Squatty white with atypically long thin flames from Kevin and April Clark's collection.**

**A swung 1013-R in peach opal from Joan Doty's collection.**



My guess is that other out-of-the-ordinary Targets exist. Vase collectors would be interested in learning what else may be out there.

### **Dugan 1013-R**

The hobs found on the Dugan swung Target vase differentiate it from the hob-absent 1013-R. Confirmed 1013-R vases have three and three-fourth inch bases and 36-point stars pressed into their bases. Reported examples range in height from just under nine to thirteen inches. All known 1013-R are peach opal. They hardly ever change hands.

The impressive 1013-R illustrated is Joan Doty's. It stands eight and three-fourth inches tall.

Dugan introduced this vase in non-iridescent opalescent glass. The early vase was called 1013, without the "R" that was attached to the carnival. There is no indication the pattern was produced beyond 1913, the year the firm was restructured as the Diamond Glass Company.

I am grateful to Neal Becker, Kevin and April Clark, Don and Kris Dorais, Joan Doty, Diane Fry, and Kate and Bill Lavelle for offering me the opportunity to showcase vases from their collections and for graciously responding to repeated requests for detail and clarification. The Clarks and Joan, especially, must be relieved the article is finally in print so I will no longer pepper them with questions. I got a kick out of discussing "deep purple" with Kate Lavelle, who in turn debated the matter with her family. Their deliberations forced me to think anew about Dugan's staple colors.

Joan Doty's article, *A Tale of Three Vases*, from Carnival Glass Society UK, is indispensable reading for vase collectors. The patterns covered are Target, Pulled Loop, and Wide Panel/Spiralex.

[Larry.Keig@cfu.net](mailto:Larry.Keig@cfu.net)

**Photo attributions are included in the photo captions.**

\*\*\*\*\*

**Part of the Display Room of Decorated carnival glass organized by Cathy and Roger Dunham.**





# www.CarnivalGlass.com

44 YEARS OF SATISFIED MAIL-ORDER CUSTOMERS  
 UPDATES EVERY TWO WEEKS—CARNIVAL GLASS IN MINT CONDITION

Lloyd R. Ward  
 P.O. Box 1006, Mayfield, KY 42066  
 Tel: (270) 251-2005 • Cell: (270) 970-0599  
 E-Mail: lrward@carnivalglass.com

## Thinking of Selling Your Collection? Turn Your Carnival Glass into Cash!

I buy one piece, 20 pieces, or a collection of Carnival

Visit [www.CarnivalGlass.com](http://www.CarnivalGlass.com)-  
 THE Place for Carnival Glass!



NECGA Treasury Report For the period January 1, 2015 thru Nov 15, 2015		NECGA Convention Report 2015	
Opening Balance - January 1, 2015	\$6,893.45		
Revenues:		Convention Revenue:	
Dues	944.00	Banquet Meals	1,020.00
Fees	450.00	Mini Auction	585.00
Convention	474.09	Card Game/Barrel Raffle	410.00
Other	0.00	Tom Burns - Auction	300.00
Total Revenue	1,868.09	Total Convention Revenue	2,315.00
Expenses:		Convention Expenses:	
Postage	143.21	Hotel Costs/Meals	1,230.08
Ink/Paper	256.40	Guest Speaker Fee	100.00
Supplies	0.00	Pizza Party Thus Night	201.93
Web site	323.64	Auction Dinner Sat Night	94.21
Hall Rental	270.00	Hospitality Room	74.70
PayPal Fees	1.64	Display Awards	50.00
Rack Cards	284.98	Banquet Favors	50.00
Other	71.97	40th Anniversary Cake	39.99
Total Expense	1,351.84	Total Convention Expenses:	1,840.91
Increase /(Decrease) in Fund Balance	516.25		
Ending Fund Balance - Nov 15, 2015	\$7,409.70	Net Convention Profit / (Loss)	\$474.09

### New England Carnival Glass Association Membership Application

Dues: \$ 18.00 per year per household. (Membership renewal is due on your anniversary date)

Name \_\_\_\_\_  
 Address \_\_\_\_\_  
 City \_\_\_\_\_ State \_\_\_\_\_ Zip Code \_\_\_\_\_  
 Telephone # \_\_\_\_\_ - \_\_\_\_\_ Email address: \_\_\_\_\_

**Send application form and dues (U.S. funds) to: Gary Sullivan, 671 Ridge Road, Wethersfield, CT 06109**

Membership includes, bi-monthly meetings, bulletins and all functions and outings. If you would like the bulletin emailed to you (vs. mail), please let us know on this form.

Make checks payable to N.E.C.G.A.

Email \_\_\_\_\_ Mail \_\_\_\_\_

#### To pay with Paypal:

Paypal payments are accepted from anywhere in the world, but the cost is \$18 and must be in United States dollars. To pay with Paypal, go to the Paypal website and send \$18 payment to newenglandcarnivalglass@gmail.com. You must include all of your contact information, including name, mailing address and email address with your payment (in the memo section is fine).

# The HOACGA Field Guide to Carnival Glass for 2015

**Heart of America Carnival Glass Association**  
**Field Guide to Carnival Glass for 2015**

84 HOACGA Field Guide to Carnival Glass

<p><b>Mirrored Lotus Rosabowls</b>                  Mirrored 200 (07), 300 (08)                  White 180, 295 (12), 100 (13)</p> <p><b>Mirrored Diamonds and Pleats</b>                  Mirrored 145 (13)                  Emboniers (covered dish) Mirrored, small 8 1/2 inches, 250 (10), 160 (12)                  Bowls, ruffled, 8-11 inches Mirrored 20-30                  Salad bowl, 8-inch, dome footed Mirrored 75 (12)                  Fruit bowl, with base Mirrored 175 (08), 200 (10)</p> <p><b>Mollet, Ede</b>                  Confial, 3 1/2 inches tall Mirrored 200 (13)                  Decanter with stopper Mirrored 95 (16) Bay 08                  Decanter, 2 wine glasses Mirrored 255 (14)</p> <p><b>Wine Glass</b>                  Mirrored 70 (12)                  Candlesticks, 8 1/2 inches Mirrored pair 400 (12), 240 (14)                  Mirrored, single 195 (08)                  Wine, see Year and date</p> <p><b>Moonprint, Brockwitz</b>                  Moonprint was made in a wide range of shapes, although not all shapes have yet appeared in carnival. The pattern consists of regularly spaced round depressions. At the juncture between of these round shapes there is a small 4-pointed star.                  Water pitchers Mirrored 650 (04), 725 (11)                  Mirrored, pale red, 300 (10)                  Butter dishes Mirrored, both damaged, 60 (06), 95 (13)                  Creamers Mirrored 50 (07), 45 (10)</p>	<p><b>Open sugar or creamer</b>                  Mirrored 45 (05), 18 (07)                  Creamer and open sugar Mirrored 95 (05)                  Water, creamer, open sugar Mirrored 145 (13)                  Emboniers (covered dish) Mirrored, small 8 1/2 inches, 250 (10), 160 (12)                  Bowls, ruffled, 8-11 inches Mirrored 20-30                  Salad bowl, 8-inch, dome footed Mirrored 75 (12)                  Fruit bowl, with base Mirrored 175 (08), 200 (10)</p> <p><b>Confial set (decanter, 6 cordials, 200)</b>                  Mirrored 1,050 (12)</p> <p><b>Mollet, Ede</b>                  Confial, 3 1/2 inches tall Mirrored 200 (13)                  Decanter with stopper Mirrored 95 (16) Bay 08                  Decanter, 2 wine glasses Mirrored 255 (14)</p> <p><b>Wine Glass</b>                  Mirrored 70 (12)                  Candlesticks, 8 1/2 inches Mirrored pair 400 (12), 240 (14)                  Mirrored, single 195 (08)                  Wine, see Year and date</p> <p><b>Morning Glory, Millersburg</b>                  An extremely rare pattern known only to pitchers and tumblers. The pitcher is a very tall, tapered style with a morning glory around the middle. About 18 are known in approximately equal quantities of pitchers, cups, and mugs.                  Water tankards Mirrored 26,000 (11), 25,000 (12)                  Tumblers Mirrored 950 (10), 475, 250 (11)                  Green 1,200 (09)                  Amethyst 55 (02), 40 (06), 28 (12)                  Green 3,200 (13), 1,000 (14), 400 (14)</p>	<p><b>Multi-Fruits and Flowers, Millersburg</b>                  Millersburg's Multi-Fruits and Flowers is a great much embedded in the name. The fruits—grapes, apples, and pears—are in high relief. Some collectors shorten the name to Multi-Fruits, but it's the same pattern. Don't confuse it with Dugan's Many Fruits, however. This one is so highly sought after and so few pieces exist that each time a collection of punch cups, all examples bring at least 3 figures—many 4 or even 5.                  Wine pitchers Amethyst 11,000 (04), 15,000 (12)                  Green 11,000 (04)                  Mirrored 14,000 (04)                  Tumblers Amethyst 1,950 (08), 600 (10)                  Green 1,800 (07), 1,400 (13)                  Mirrored 1,800 (12), 1,700 (14)</p> <p><b>Punch sets, 8 pieces</b>                  Amethyst 1,200 (11), 1,100 (13)                  Amethyst, tulip shape, 1,300 (11)                  Amethyst, 6 pieces, 1,500 (07)                  Amethyst, 5 pieces, Scroll &amp; Grape int., 2,000 (10)                  Blue, tulip shape 20,000 (11)                  Green 1,000 (07), 1,700 (14)                  700, 2,200 (07)                  Mirrored 1,100 (13)                  Mirrored, tulip shape, 3,000 (11), 2,800 (14)</p> <p><b>Punch bowls and bases</b>                  Amethyst 200 (13), 1,400 (14)                  Blue, tulip shape 22,000 (17)                  Mirrored 750 (09)</p> <p><b>Punch base only</b>                  Amethyst 115 (08), 300 (08)                  Blue 1,050 (07)                  Green 75, 85 (08), 85 (10)                  Mirrored 200 (08), 100 (09)</p> <p><b>Punch cups</b>                  Amethyst 55 (02), 40 (06), 28 (12)                  Blue, 3/4 2,450 817 (07)                  Green 23 (11)                  Mirrored 28 (10)</p>
---	---	--

Alphabetical Listings

<p><b>Multi-Fruits and Flowers sheets</b>                  Amethyst 300 (13), 475 (14)                  Green 500 (12), 275 (14)</p> <p><b>Nautilus, Northwood/Dugan</b>                  The Nautilus pattern produced the Carnival era and has been called Argonaut Shell. Northwood produced an extensive line in cut and opalescent glass—some molds have the early "Northwood" in script. The molds were transferred to Dugan who produced the low limited shapes in carnival. Apparently Dugan did not immediately remove the mark, so some pieces are found with the Northwood script.                  Creamer/teary Peach spot 25, 95, 100 (12), 35 (14)                  Peach spot, stout, Lisbon NY 95 (05)                  Purple 85 (12), 35, 40, 50 (14)                  Sugar bowls Peach spot 65, 150 (13), 115 (14)                  Purple 115 (13), 85, 80, 125 (14)                  Glass, see Year and date</p> <p><b>Near Cut, Cambridge</b>                  Found in creamers and mugs of a similar design. Usually with reverse lettering.                  Creamers Mirrored, Vista, Iowa, 125 (02)                  Mirrored, Anna, Iowa, 125 (03)                  Mirrored, Sandstone, Minn., 75 (05)</p> <p><b>Mugs</b>                  Mirrored 55 (07)                  Mirrored, Graeville, Minn., 30 (11)                  Mirrored, Madison, Wis., 75 (02)</p> <p><b>Tumblers</b>                  Mirrored, Good Thunder, Meen, 55 (11)                  Mirrored, Hamilton, Ont., 35 (14)                  Purple 800 (10)</p>	<p><b>Near Cut, Northwood</b>                  A scarce pattern, known in this globe and water set pieces. The height of goblet is 8 inches.                  Goblets Mirrored 195 (07), 350 (14)                  Purple 90 (08), 50, 85 (07)                  Pitchers Mirrored 190 (07), 110 (14)</p> <p><b>Tumblers</b>                  Mirrored 400 (13), 140 (14)                  Purple 800 (12), 350 (11)</p> <p><b>Nesting Swan, Millersburg</b>                  Millersburg's swan pattern is found in the usual Millersburg colors, although rose blue and seafoam are known. The back pattern is called Diamond and Ice and is visible through the above bowl.                  Bowls, mostly ruffled or 31 edge Amethyst 175, 200, 400, 175 (14)                  Amethyst, tumbler 5,200 (13)                  Amethyst, round flared, 850 (10)                  Amethyst, profile came from mold, lettering 3,200 (08)                  Amethyst, blue red, 4,000 (07)                  Blue, ice cream shape, 3,500 (09)                  Green 120, 180, 225, 275 (14)                  Green, taper 500 (13), 2,100 (14)                  Green, emerald 1,000 (05)                  Green, square or diamond shape, 1,000 (12), 875 (14)                  Green, ice cream shape, 480 (08), 550 (10)                  Mirrored, ruffled 115, 130, 175, 175 (14)                  Mirrored, profile came from mold 350 (05)                  Mirrored, blue red, 425 (05)</p>	<p><b>Mirrored light comp.</b> 45 (05)                  Mirrored, round, blue red, 3,700 (10)                  Vaseline 725 (09), 800 (13)</p> <p><b>Chip plate, 10 inch, 1 crown</b>                  Green 6,000 (09)</p> <p><b>Rosebowl</b>                  Mirrored 3,100, 3,500 (09)</p> <p><b>Spiritous leaves</b>                  Night Stars, Millersburg                  A scarce pattern, known in this globe and water set pieces. The height of goblet is 8 inches.                  In any shape, Night Stars is hard to find and much in demand. Almost all known examples are the two-handed bottle shape shown, though there are a few single-handed nappies.                  Bowls Amethyst 550 (10), 500 (12)                  Green 850 (11), 550 (13)                  Mirrored 575 (12), 600 (14)                  One green 225, 200, 100, 175 (13)</p> <p><b>Nappy, upside shape</b>                  Amethyst 3,200 (10)</p> <p><b>Nippon, Northwood</b>                  Don't mistake Northwood's Nippon for Federal's Peacock. Nippon has a circular design in the center of the Imperial Crest of the Emperor of Japan. With the Peacock, 5 1/2 inches the design continues into the center. Bowls may have either a basaltine back or in ruffled back although a few with plain backs have also been reported.                  Plates, 8 inches Amethyst/purple 480, 500 (13), 300 (14)                  Green 525, 950 (13), 175 (14)                  Ice blue, one known, 1,000 (10)                  Ice green, only known, 12,000 (14)                  Mirrored 475 (13), 200, 400 (11)                  White 11,000 (09)</p>
--	--	--

Designed to be handy to use, the Field Guide is 6 x 9 inches. Within its 200 pages are listings for Carnival Glass patterns along with a photo of each pattern, a brief description, shapes found in each pattern, and prices for each shape in the colors available. Price reports are based on auction sales from the past 15 years with emphasis on the most recent years, up to and including some of 2015. This edition has 29,000 individual prices and 1,200 photographs.

**Table of Contents**  
 Classic patterns, A-Z  
 Lettered carnival  
 Vases  
 Novelties and miniatures  
 Decorated carnival  
 Lamps and shades  
 Hatpins  
 Spectacular Carnival sold at auction

**Ordering information**  
 The 2015 Field Guide may be ordered from:  
[Heart of America Carnival Glass Association](http://www.heartofamericacarnivalglass.com)  
 The price is \$20 for individual US shipments.



**CARNIVAL GLASS SHOWCASE**  
 Where collectors gather to strut their stuff and tell their stories.

We have a passion! Join in on the fun!  
 Sign up for our Newsletter and be sure to tell a friend!  
[www.CarnivalGlassShowcase.com](http://www.CarnivalGlassShowcase.com)