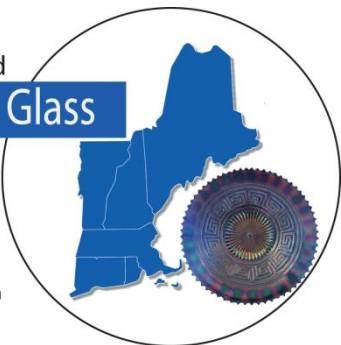


# ***New England Carnival Glass Association***

New England  
**Carnival Glass**  
Association

40th Anniversary  
1975-2015

www.NECGA.com



**President**  
Don Dorais  
150 Highland Avenue  
Cumberland, RI 02864  
(401) 724-4874  
[ksd24ddd24@cox.net](mailto:ksd24ddd24@cox.net)

**Vice President**  
Steve Lindquist  
671 Ridge Road  
Wethersfield, CT 06109  
(860) 257-1816  
[stevenandgary@cox.net](mailto:stevenandgary@cox.net)

**Treasurer**  
Gary Sullivan

**Secretary/Recording**  
**Secretary/Bulletin Editor**  
Kristine Dorais

**Board of Directors**

Norm Spicher        Harold March  
Anna Ketola         Bob Preseau  
Joanne Andrews

**Webmaster:** Steve Lindquist

\*\*\*\*\*

Vol. 35, No. 4

*CARNIVAL GLASS FOREVER*

AUGUST 2016

\*\*\*\*\*

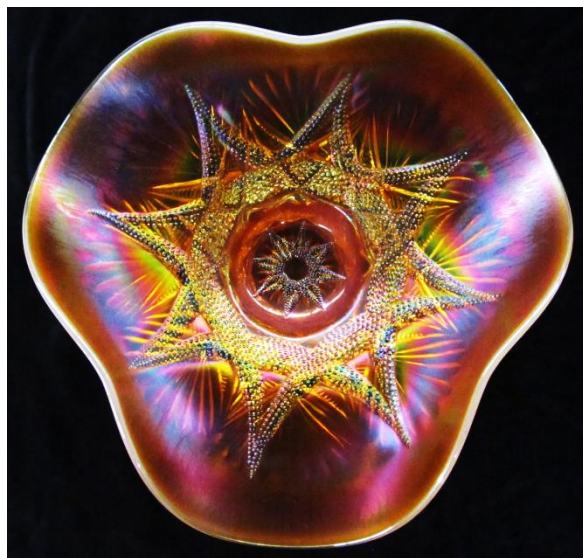
*Meeting Highlights...Look Inside For More!*



Imperial's  
Corn Bottle in  
Smoke

Dugan's Ski  
Star tri-corner  
bowl in Peach  
Opal

***IT'S A PICNIC!***  
***SUNDAY, AUG. 14<sup>th</sup>***  
***11:00 a.m.-6:00 p.m.***



**AUGUST MEETING IN  
STURBRIDGE, MA  
WESTVILLE  
CAMPGROUND  
(see inside for directions)**

Show & Tell Theme  
**YOUR 1<sup>st</sup> PIECE, BERRIES  
& NEW FINDS**

# The President's Newsletter

I'll make this very easy.....

**Convention – Convention – Convention...**



- For discounted room reservations, call by August 8<sup>th</sup>!
- For discounted banquet meal (\$25), pay Gary Sullivan by August 14<sup>th</sup>!
- Room displays: prizes: 1<sup>st</sup> place \$50, 2<sup>nd</sup> place a free membership
- Food goodies for the hospitality room are needed.
- If you have some glass you would like to donate for the barrel fundraiser, bring it.
- Mini auction donations needed.

**Now, pay attention....the August meeting will be at the Westville**

**Recreation Area** which can be accessed from Wallace Road in Sturbridge, which is located directly off of Main Street. The Dam and Recreation area can also be accessed from West Street in Southbridge by taking a right onto South Street. The picnic will start at 11:00 a.m. and end by 5 or 6 p.m. Hotdogs and hamburgers will be provided by the club.

Please RSVP to Kris what your food choice is. We just don't want to purchase too much if we don't have to. The grill will be there. If you would like to cook something else, you can bring it yourself. If you have any problems finding the area, please call Donnie's cell phone at 401-692-9359. Louie says it is only 1 or 2 miles from the Polish Home. The physical address for the Westville Lake Recreation Area is 125 Wallace Road (Off Rte. 131).

See you on the 14<sup>th</sup>!

Sincerely, President Don

## Calendar of Events

**September 8 – 10, 2016**

**New England Convention**

**September 29, 2016**

**Northern California Carnival Club Convention**

Ramada Inn Fresco Airport

559---252---3611 Burns Auction

Contact: Jeanne Hand --- 209---533---4479

**October 5 – 7, 2016**

**Air Capital Convention**

Best Western Airport Inn, 6815 W. Kellogg, Wichita, KS

Reservations 316---942---5600, or Don Kime 316---733---8424

Banquet speakers Galen and Kathi Johnson

**October 20 – 22, 2016**

**Mid---Atlantic Convention**

Ramada Plaza Hotel, Hagerstown MD

301---797---2500 Burns Auction

Beth Margerum [bethmargerum@verizon.net](mailto:bethmargerum@verizon.net)

**October 27 – 29, 2016**

**Great Lakes Convention**

Ramada Convention Center, Lansing, MI – 517---627---3211

Maxine Burkhardt [trippingranny@comcast.net](mailto:trippingranny@comcast.net) or

Mark Richter [mark.richter@att.net](mailto:mark.richter@att.net)

[www.greatlakescgc.com](http://www.greatlakescgc.com)

## 2016 CONVENTION TEASERS

- Ice Blue Raspberry Water Pitcher
- Imperial Purple Swan
- Red Orange Tree Mug
- Peacock & Dahlia Plate in Pumpkin
- Nippon Plate in Green
- Palm Beach Vase
- Ice Blue Peacock Plate
- Heavy Grape Chop Plate with Stretch Iridescence in Smoke
- Green Inverted Strawberry Butter Dish
- Amber Loganberry Vase
- 474 Water Pitcher in Green
- Brocaded Acorns Ice Bucket in Ice Blue

Notes from the Sunday, June 12<sup>th</sup> meeting.

Present at the meeting: Kris & Don, Gary & Steve, Dave & Sue Noyes, Ben Perez, Norm Spicher, Louie Carpick, Paul & Yvette Berube. Show & Tell took place and the meeting started at 1:35 p.m.

A motion to accept the bulletin minutes...All were in favor. A motion to accept the treasury report...all were in favor.

2016 Convention:

- President Don reported that the deposits were sent in for the 2016 and 2017 conventions. Both contracts were signed and returned back to the hotel.
- **To remind everyone, the deadline to receive the banquet meal \$7.00 discount is Sunday, August 14<sup>th</sup>. This means the meal cost is \$25.00 per person. After that date, the cost is \$32.00 per person. Please send all checks to Gary Sullivan.**
- Gary & Steve will be hosting an ice cream social after the pizza party on Thursday night at 8:00 p.m.
- As a fundraiser for the club, Bob Preseau filled a barrel with carnival glass and it was auctioned off last year. Bob needed a new barrel this year and Jim and Val Stangel found one and donated it to the club. Thank you very much.

New Business:

- While we were at the June meeting, we talked about having a picnic rather than a meeting. Louie suggested the Westville Recreation Area in Sturbridge which is only a mile or two away from the Polish Club. Kris called and Shelter #2 was available. This is a covered picnic area with picnic tables and barbeque grill. Everyone thought it was a great idea. We can start the day off early, have hotdogs and hamburgers, hold the meeting and chat. And call it a day at 5 or 6 p.m. when we wrap up.
- Regarding the Spring Fling, we will look for a different restaurant next year. Also, Robin will be checking on the date for the Spring Fling next year (April 23<sup>rd</sup> weekend, if the rate is the same).

Meeting adjourned at 1:55 p.m.

Theme: "The 1<sup>st</sup> piece you Bought", Berries and New Finds

Next Meeting: Sunday, August 14<sup>th</sup> at 11:00 a.m.

Meal: Hotdogs and Hamburgers will be provided. Cold salads, munchies and desserts will be needed.

Join the Stretch Glass Society in  
Celebrating the Centennial of Stretch Glass

In 1916 nine American glass companies created and introduced iridescent stretch glass to consumers. Production would continue until the mid 1930's and resume in the 1970s when the Fenton Art Glass Company re-introduced iridescent stretch glass and included it in its annual offerings for the next 40 years. Over 1000 distinct items were created, many of which were produced in several of the over 30 colors in which stretch glass was made.

Visit [www.stretchglassociety.org](http://www.stretchglassociety.org) and Stretch Glass Society on Facebook to find out more about the exhibits and special events planned as the Stretch Glass Society celebrates the 100th anniversary of stretch glass.

*The Stretch Glass Society*  
Founded April 21, 1974 in Denver, PA.  
PO Box 117, Sunbury, Ohio 43074

100 YEARS  
A century of handmade stretch glass in America

# www.CarnivalGlass.com

44 YEARS OF SATISFIED MAIL-ORDER CUSTOMERS  
UPDATES EVERY TWO WEEKS—CARNIVAL GLASS IN MINT CONDITION

Lloyd R. Ward  
P.O. Box 1006, Mayfield, KY 42066  
Tel: (270) 251-2005 • Cell: (270) 970-0599  
E-Mail: [lrward@carnivalglass.com](mailto:lrward@carnivalglass.com)

**Thinking of Selling Your Collection?  
Turn Your Carnival Glass into Cash!**

I buy one piece, 20 pieces, or a collection of Carnival

Visit [www.CarnivalGlass.com](http://www.CarnivalGlass.com)—  
THE Place for Carnival Glass!





# VANITY ITEMS



Northwood's Grape & Cable...Cologne bottles, large oval dresser tray, small oval pin tray, hatpin holder, powder jar and Dugan's Vintage small perfume (no cable)

Fenton's  
Butterfly &  
Berry Hatpin  
Holders in  
Blue and  
Marigold



Millersburg's  
Seacoast Pin  
Tray in Green

# New England Carnival Glass Association Convention 2016 - September 8-10 Doubletree by Hilton-Leominster, Mass.

Call for Reservations 1-978-534-9000

Call for discounted room rate of \$98 plus tax per night before Aug. 8<sup>th</sup>

**Register under New England Carnival Glass Association**

Banquet Dinner: Fri., Sept. 9

Auction: Sat., Sept. 10

## Convention Schedule

Thursday night ... Pizza/Antipasto Party 6:00 p.m. followed by Ice Cream Social at 8:00 p.m. hosted by Gary & Steve

Friday... Seminar #1: 2:00-3:00 p.m...bring your piece of glass to  
**Stump Tom Burns**

Banquet 6:00 p.m.

Guest Speakers: **Cal Hackeman on Stretch Glass**  
Followed by Mini Auction

Saturday... Seminar #2: 11:15 a.m.-Noon...**Gary Sullivan & Steve Lindquist...Imperial Glass!**

Auction Preview: 1:30 p.m. to 3:00 p.m.  
Tom Burns Auction begins 3:00 p.m.

***Visit Brimfield...the largest Outdoor  
Antiques event in New England from Sept. 6-11  
6,000 dealers on hand – 60 minutes from hotel***

*Call Don  
Dorais  
with  
questions  
401-  
724-4874*

**AUCTION TEASERS: PICTURES OF THE GLASS AND AUCTION LISTING  
WILL BE PLACED ON THE WEBSITE. KEEP CHECKING.... [www.necga.com](http://www.necga.com)**

The banquet buffet meal is \$32 a person. Plated meal: Chicken **OR** Beef (similar to last year). Please let Gary know your choice.  
Send your payment by August 14<sup>th</sup> to: Gary Sullivan, 671 Ridge Road, Wethersfield, CT 06109. **If you pay by August 14<sup>th</sup>, the club will subsidize your banquet meal, so the cost would be \$25.00 per person.**





# ***New England Carnival Glass Association 2016***

## ***Convention Schedule***

### ***Thursday, September 8***

- 6:00 p.m. Pizza Party & Antipasto, Hospitality Room*  
*8:00 p.m. Ice Cream Social*

### ***Friday, September 9***

- 2:00 p.m. Stump Tom Burns*  
*6:00 p.m. Banquet*  
*NECGA Club Members, guest speaker,  
Cal Hackeman on Stretch Glass*  
*Followed by Mini-Auction*

### ***Saturday, September 10***

- 11:15-Noon Imperial Glass by Gary Sullivan & Steve  
Lindquist*  
*Noon to 12:30 Short club meeting*  
*1:30-3:00 p.m. Auction Preview*  
*3:00 p.m. Auction & Awards – Over 200 lots!*

2016 Convention Registration  
September 8, 9 and 10

Doubletree by Hilton  
99 Erdman Way, Leominster, MA

Registration: FREE

**September 8<sup>th</sup>**

Pizza Party 6 pm FREE

Ice Cream Social FREE

**September 9<sup>th</sup>**

Hospitality Room FREE

Seminar 1 – “Stump Tom” FREE

Banquet and Banquet Speaker

Chicken \_\_\_\_\_ x \$32 = \_\_\_\_\_

Beef \_\_\_\_\_ x \$32 = \_\_\_\_\_

(\$25.00 each if paid by August 14<sup>th</sup>)

**September 10<sup>th</sup>**

Hospitality Room FREE

Seminar 2 – “Imperial Glass” FREE

Annual Dues @ \$18 per household \_\_\_\_\_

Total Amount enclosed: \_\_\_\_\_

Make Check payable to NECGA (US Funds)

Mail form and payment to:

Gary Sullivan

671 Ridge Road

Wethersfield, CT 06109

Name(s) \_\_\_\_\_

Address \_\_\_\_\_

City \_\_\_\_\_

State \_\_\_\_\_

Zip Code \_\_\_\_\_

Telephone # \_\_\_\_\_ - \_\_\_\_\_

Email address: \_\_\_\_\_

(For electronic delivery of newsletter)

**What is this punch cup???**...Ever since I bought a lone Marigold punch cup at this year's Tampa auction, I have been trying to figure out all the Flute Pattern Numbers that Imperial made. We tend to lump them all under the generic term "Flute" and then say variant to reflect the differences in the actual fluting. So far, I see Imperial's pattern #700 as the Flute we normally refer to. But I don't know that there is a tumbler to pattern #700 even though there is a water pitcher. What we call Flute Variant #1 tumbler is actually Imperial's pattern #340 or #380. What we call Flute Variant #2 tumbler is actually Imperial's pattern #515. I haven't figured out Variant #3.

There is a Punch Set with Punch Cup in #700. But the Punch cup that we bought in Tampa this year is Imperial's pattern #672. It can be seen being sold as a custard cup on page 120 of the Imperial Catalog Book (Blue Cover).



This same book shows a Chesterfield lidded water set



**No. 340 tumbler.** ground bottom. packed 16 dozen in bbl. barrel lots, \$0.45 per doz. smaller lots, 0.50 per doz.  
**No. 339 tumbler.** ground bottom. packed 15 dozen in bbl. barrel lots, \$0.50 per doz. smaller lots, 0.55 per doz.  
**No. 380 ice tea tumbler.** ground bottom—12 oz. packed 12 dozen in bbl. barrel lots, \$0.85 per doz. smaller lots, 0.75 per doz.



being listed on page 131. The water pitcher is Imperial's pattern #600. It is shown as being sold with six #672 10oz tumblers. So Chesterfield is pattern #600 but I don't know that this pattern had tumblers either. Imperial simply matched a water pitcher with another pattern's tumblers and sold it as a set.



I just recently bought a milk sized pitcher from a Seeck auction that was listed as Imperial Flute. It is smaller than the water pitcher #700 Flute. But when I received it, I noticed that it is different from the #700 Flute pattern and I actually think it is part of the #672 line as it has the same handle as the #672 custard cup.

The Flute #700 handles are part of the mold, they are not applied afterwards. On all of the #700 pieces that I have (water pitcher, creamer and sugar, punch cup etc.) the handle flares out at the bottom where it meets the main body of the piece. On the #672 custard cup and the milk pitcher, I bought from Seeck, the handle is also part of the mold, but it does not



flare out at the bottom.

I attached several photos. The photo

showing the handles of the two pitchers shows the #672 on the left and the #700 on the right. You can see the difference in the handle at the bottom.

Gary Sullivan



## NEW FINDS

Hi There,

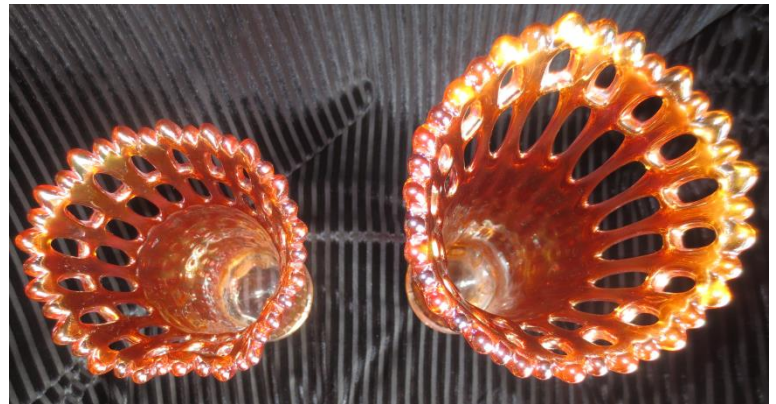
This story starts last month at the end of June when Jocelyne went away for the weekend with her sisters. She left me all ALONE!!!! What can I do for three whole days??? I decided to go to an estate auction that Saturday and do a little antiquing. The auction listing said there was carnival glass but didn't have any pictures on the Web-Site. So on Saturday morning I headed to the auction in Cardinal ON... an hour away. When I got there, people were still taking things out of the house as it also was up for auction that day. The front yard was full of furniture,



tools, mowers etc. As I went to the back yard, they had tables set up along the house full of all types of glass in box lots. At the far end of the tables.....Sticking out of one of the box lots was this BEAUTIFUL golden marigold Blackberry Open Edge Whimsey Vase. As it was sunny that day, the vase was just GLEAMING as the sun rays hit it. First off, when I saw it, my heart started beating a little faster and then as I was heading

over to inspect it, I was thinking, is this vase,

damaged, cracked, or chipped. As I picked it up and I@@ked at it.....to my surprise it was in pristine condition and had a nice dark marigold color. Most of the time when you see these vases, they have some sort of damage. At that moment, I knew that vase was coming home with me to add to my collection. I already have a beautiful marigold one in my collection at home that I got from Mrs. Kelly in Lombardy ON. in 2010, so I had to have a pair of these. As they say, vases should always be kept in pairs, either being bought or sold and are a standout in any collection.



Now before I get back to the auction.....let me tell you a little bit about Fenton's Blackberry Open Edge Whimsey Vases. They were made by Fenton around 1910-1925. They are a two row style vase that is SWUNG from the big baskets. They all have the Blackberry interior with this pattern at the bottom of the vase. They all have the basketweave exterior. The vintage vases come in marigold and blue and all of these vase whimsies are considered SCARCE. The usual heights are from seven to nine inches. The one I got from Mrs. Kelly is nine and a half inches and Tom Burns told me there are very few swung that much, and the one I got in Cardinal is eight and a quarter inches. Now that you know I got that vase, let's get back to the story....

The auction started off with the box lots being sold first, but the carnival glass was being sold separate. GUESS what they grabbed first to be auctioned off.....You got it.....that BEAUTIFUL vase. The bidding was FIERCE and after the DUST settled I got it for \$27.00 CAN,

not bad EH!!!! I wasn't interested in any other carnival glass so I cashed out and headed to do some antiquing for the rest of the day.

I headed to Perth ON. to an antique flea market as they always have a few pieces of carnival glass up for grabs at the right price. Along the way, between Smith Falls ON. and Perth, there was a garage sale so I stopped and on one of the far tables I spotted it.....a Millersburg Hobstar and Feather Compote in crystal circa. 1909, with an ice cream shape top. Millersburg produced crystal the same time it made carnival, so if you get a chance to pick up a couple pieces of Millersburg crystal, DO IT, as they always look good in any collection. The compote was in perfect condition, so I asked the elderly couple....How Much????.....He asked his wife and she said...ONE DOLLAR....SOLD!!!!!! Jocelyne wasn't there so I didn't



dicker with them. What a day I was having!!!!The hunt for carnival glass is always exciting. By the way, Jocelyne picked up a Millersburg Hobstar and Feather Ruffled Compote in crystal in March of this year for \$12.00 and when she found out what I paid for mine she was MAD!!!

Leaving the garage sale I headed to Perth for the antique flea market. They had a few pieces of carnival glass but nothing I was interested in...So I headed back home...Boy what a day.

The last day of FREEDOM on Sunday I headed out for the Morrisburg Flea Market about a half hour from home. At one of the vender's booth, placed at the bottom of a shelf was this Fenton's Blackberry Two Row Banana Shaped Basket in Blue. As I picked the piece up and inspected it.....PERFECT.....pristine condition but it was FILTHY....I mean this piece must have been used for a cat dish or out in the barn somewhere for many years. The price on it was \$20.00..... You Got It.....I dickered him down to \$15.00 which I thought was a pretty good price. On taking the piece home I gave it the old COMET clean, boy did it come out GREAT!!! The colors were fantastic. I learned this method of cleaning from a friend of mine, Jim Wroda. Just wet the piece of glass and sprinkle comet on it and by using a wet sponge, rub and rinse and wipe with a clean dry cloth.....works wonders.



Well, that's my story of new finds and the week end of freedom...Hope you all enjoyed it. Will see you all at the conventions in September.

Brian and Jocelyne

P.S. As I said many times before.....CARNIVAL GLASS PEOPLE ARE THE BEST.....

# AGRA GRAPEVINE

## by Bob Smith



Since the revelation in 1996 that Carnival Glass was made in India by several different glass companies, hardly a month goes by without some previously unknown tumbler or vase turning up with the individual collectors or on the web in such sites as EBay. Some of us might curse EBay as an abomination, but it has its good point as far as revealing what Carnival Glass is out there in the USA or around the world.

Luckily for me, the Agra Grapevine tumbler was one of a number of tumblers that I brought back from India in 1996. Since all these tumblers I brought back were unknown to American collectors, I had the chore of having to name them all for identification. I chose to name the Agra Grapevine after the city of Agra where one of the most famous buildings in the world is located. Here was the site of the Taj Mahal, the mausoleum built by King Shah Jahan for his beloved wife and considered one of the seven

most beautiful buildings in the world. It is just by chance that THE CITY OF Firozabad is located a short distance away and is the great glass city of India where many of the companies like Jain produced Carnival Glass.

The motif of the tumbler itself is very simple. There are two bands below the rim and two narrow bands above the base. Between them is the pattern of a leafy grapevine encircling the tumbler from which hangs bunches of grapes. Contrary to some Indian tumblers, the marigold coloring is very good and even on this tumbler. It measures 5 ½" high, has a 3 ½" rim and a 2 ½" base.

On the base are the capital letters AGW. This indicates that it is a product of the Agarwal Glass Works, located in Firozabad. I would point out to the reader that there may be tumblers of a similar pattern, but of a different size, which just have not yet surfaced.

Happy Hunting!

Feedback – [necgabobsm@aol.com](mailto:necgabobsm@aol.com)



NECGA Treasury Report For the period January 1, 2016 thru July 25, 2016		NECGA Convention Report 2016	
Opening Balance - January 1, 2016	\$7,255.16		
Revenues:		Convention Revenue:	
Dues	414.00	Banquet Meals	182.00
Fees	250.00	Mini Auction	0.00
Convention	(448.00)	Card Game/Barrel Raffle	0.00
Other	0.00	Tom Burns - Auction	0.00
Total Revenue	216.00	Total Convention Revenue	182.00
Expenses:		Convention Expenses:	
Postage	101.59	Hotel Costs/Meals	600.00
Ink/Paper	142.19	Guest Speaker Fee	0.00
Meeting supplies	21.45	Pizza Party Thus Night	0.00
Web site	0.00	Auction Dinner Sat Night	0.00
Hall Rental	270.00	Hospitality Room	0.00
PayPal Fees	3.28	Display Awards	0.00
Rack Cards	0.00	Banquet Favors	0.00
Other	0.00	Glass for games	30.00
Total Expense	538.51	Total Convention Expenses:	630.00
Increase /(Decrease) in Fund Balance	(322.51)		
Ending Fund Balance - July 25, 2016	\$6,932.65	Net Convention Profit / (Loss)	(\$448.00)
2017 Convention Deposit	\$600.00		
Cash Balance	\$6,332.65		

### New England Carnival Glass Association Membership Application

Dues: \$ 18.00 per year per household. (Membership renewal is due on your anniversary date)

Name \_\_\_\_\_

Address \_\_\_\_\_

City \_\_\_\_\_ State \_\_\_\_\_ Zip Code \_\_\_\_\_

Telephone # \_\_\_\_\_ - \_\_\_\_\_ Email address: \_\_\_\_\_

**Send application form and dues (U.S. funds) to: Gary Sullivan, 671 Ridge Road, Wethersfield, CT 06109**

Membership includes, bi-monthly meetings, bulletins and all functions and outings. If you would like the bulletin emailed to you (vs. mail), please let us know on this form.

Make checks payable to N.E.C.G.A.

Email \_\_\_\_\_ Mail \_\_\_\_\_

#### To pay with Paypal:

Paypal payments are accepted from anywhere in the world, but the cost is \$18 and must be in United States dollars. To pay with Paypal, go to the Paypal website and send \$18 payment to newenglandcarnivalglass@gmail.com. You must include all of your contact information, including name, mailing address and email address with your payment (in the memo section is fine).

**ICGA Convention Report, 2016**  
**by Carl and Eunice Booker**

The 2016 convention of the International Carnival Glass Association was held at the Blue Gate Garden Inn in Shipshewana, Indiana. This is an interesting, Amish/Mennonite community in north central Indiana. It has lots of quaint shops and very good food. The Blue Gate Garden Inn is one of the neatest, cleanest, and friendliest places we have been.

The convention officially started on Wednesday evening, July 13, 2016, with an ice cream social. Along with the ice cream were two cakes (thanks, Lee Markley), some fresh sliced peaches, different toppings for the ice cream, and lots of good camaraderie. A pizza party was held on Thursday. Several early bird members had arrived as early as Monday and Tuesday.



One feature of this convention was a beautiful display of chop plates. There were seventy-two chop plates brought by members for the display. Carl and Eunice Booker were responsible for getting the display together and gave a seminar on the plates on Friday.

There were three other seminars during the convention other than the one on chop plates. Members of the Hoosier Carnival Glass Association gave a seminar on some of their favorite pieces of carnival glass. Bill and Kenda Jeske gave a seminar with interesting visual effects along with some very nice pieces of carnival glass. Their seminar took us around the world with carnival glass. The fourth seminar was at the Friday night banquet. Richard and Barb Thorne from Washington state brought some very nice pieces of carnival glass which featured several pieces of Question Mark. Richard told interesting stories about their collecting experiences.

Cathy and Roger Dunham brought a new and interesting item to this convention. It was called a "paddle auction." It seemed a bit complicated at first, but Cathy did a good job of explaining how it works and the members involved seemed to enjoy the activity. Thanks, Cathy and Roger.

It would be remiss not to mention the good job Lane Booker did in handling the hospitality room. He had good help from Gale Eichhorst and Reg Dunham (along with several others).

At the annual business meeting Brian Foster was re-elected president and Roger Dunham was re-elected vice-president. The following were re-appointed: Becky Cronin, secretary; Cathy Dunham, treasurer; and Barb Chamberlain, editor. Tom Bumpass retired from the board of directors and was replaced by Billy Wilson. Other board members re-elected were Janet Knechtel, Sherry Cyza, Joan Steskal, Lee Markley, and Eunice Booker.

The ICGA convention for 2017 is being planned for the Crowne Plaza hotel in St. Louis. Please watch the literature (The Carnival Pump) for more information and make your plans early for this convention. It should be scheduled for the third week in July.

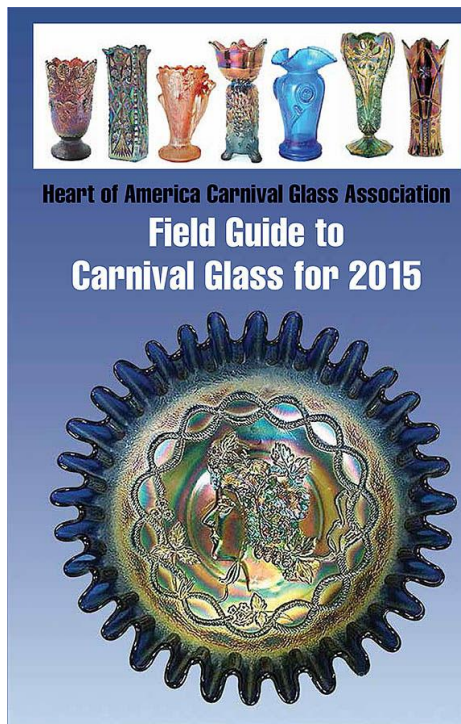
The following is a partial price report from the Seck Auction which was held on Saturday:

Amethyst Mitered Ovals vase - \$10,000; marigold - \$9,750  
Blue Peacock 3-1 edge Mystery bowl - \$5,500  
Amethyst Hanging Cherries square compote - \$5,500  
Amethyst Courthouse 3-1 edge bowl - \$2,900; Lavender - \$2,000  
Purple Tree Trunk ruffled jardiniere - \$2,800  
Amethyst Deep Grape square compote - \$2,700  
Amethyst Millersburg Hobnail jardiniere - \$2,400  
Amethyst Millersburg 1910 Detroit Elks 3-1 edge bowl - \$2,300

**NECGA Cutoff date for hotel is AUGUST 7<sup>th</sup>. Please call 1-978-534-9000.**  
**Deadline for meal discount of \$25.00 per person is August 14<sup>th</sup>. After that \$32.00**  
**per person. Please send check to Gary Sullivan, Treasurer.**



# The HOACGA Field Guide to Carnival Glass for 2015



HOACGA Field Guide to Carnival Glass		Alphabetical Listings		
<p><b>Mirrored Lotus rosebells</b> Margarit 200 (07), 300 (08) White 150, 250 (10), 150 (12)</p> <p><b>Mirrored Diamonds and Pleats</b></p> <p><b>Open sugar or conopse</b> Margarit 45 (05)</p> <p><b>Creamer and open sugar</b> Margarit 45 (05)</p> <p><b>Batlic, creamer, open sugar</b> Margarit 45 (05)</p> <p><b>Banbaniere (covered dish)</b> Margarit, small lid chip, 250 (06), 160 (12)</p> <p><b>Bowls, ruffled, 8-11 inches</b> Margarit 25 (30)</p> <p><b>Saled bowl, 8-inch, dome footed</b> Margarit 75 (12)</p> <p><b>Fruit bowl, with base</b> Margarit 175 (08), 200 (10)</p> <p><b>Porcelain made by Swenby, I've only heard of the pattern in margarit. Rosebells and bowls are worth \$15 to \$25.</b></p> <p><b>Mollet, Eda</b></p> <p><b>Corial, 1 1/2 inches tall</b> Margarit 200 (10)</p> <p><b>Decanter with stopper</b> Margarit 91 (04), 05 (05)</p> <p><b>Decanter, 2 wine glasses</b> Margarit 225 (14)</p> <p><b>Wine Glass</b> Margarit 70 (02)</p> <p><b>Clare and Stephen Thistlewood report flared out bowls, straight up bowls, and the rosebowl shape. This 10-inch blue rosebowl (with pebbled) sold at a 2001 auction for \$70. A margarit example, about 8 inches and now with pebbled, brought the same price at the same auction. In 2007, a margarit rosebowl brought \$25.</b></p> <p><b>Cadiznicka, 8 1/2 inches</b> Margarit, pair 400 (13), 240 (14)</p> <p><b>Decanter with stopper</b> Margarit 91 (04), 05 (05)</p> <p><b>Wine, see New Year action</b></p> <p><b>Morning Glory, Millersburg</b></p> <p><b>Moonprint, Brockwitz</b></p> <p><b>Moonprint was made in a wide range of shapes, although not all shapes have yet appeared in carnival. The pattern consists of regularly spaced round depressions. At the junction between these round shapes there is a small 4-pointed star.</b></p> <p><b>Water pitchers</b> Margarit 650 (04), 225 (01) Margarit, pale ind., 200 (10)</p> <p><b>Butter dishes</b> Margarit, both damaged 60 (08), 60 (10) Green 800, 1,200 (10) Margarit 400 (14)</p>	<p><b>Multi-Fruits and Flowers, Millersburg</b></p> <p><b>Milburg's Multi-Fruits and Flowers is pretty much embedded in the name. The fruits—apples, pears, and peaches—are in high relief. Some collectors shorten the name to Multi-Fruit, but it's the same pattern. Don't confuse it with Dugan's Many Fruits, however. This one is so highly sought after and so low priced (especially with the exception of punch cups, all examples bring at least 3 figures—many 4 or even 5.</b></p> <p><b>Water pitchers</b> Amethyst 11,000 (04), 15,000 (12) Green 11,000 (04) Margarit, pair 400 (13), 240 (14)</p> <p><b>Tomblers</b> Amethyst 1,900 (03), 600 (10) Green 1,800 (07), 1,400 (10) Margarit 1,400 (10), 1,700 (14)</p> <p><b>Punch sets, 8 pieces</b> Amethyst 1,300 (11), 2,100 (13) Amethyst, tulip shape, 2,300 (11)</p> <p><b>Blue, tulip shape</b> Amethyst, 1,500 (07)</p> <p><b>Amethyst, pieces, Scott &amp; Grape int.</b> 2,000 (05)</p> <p><b>Green</b> 1,000 (07), 1,700 (14) Margarit 700, 2,300 (07)</p> <p><b>1,100 (11)</b></p> <p><b>Punch bowls and bases</b> Amethyst 700 (03), 1,400 (14) Blue, tulip shape 2,000 (07) Margarit 500 (08)</p> <p><b>Punch bases only</b> Amethyst 175 (03), 300 (08) Blue 1,500 (07) Green 75, 85 (09), 85 (10) 200 (08), 100 (08)</p> <p><b>Punch cups</b> Amethyst 50 (07), 40 (09), 35 (12) Blue, Star 5 (03) Green 20 (11) Margarit 25 (03)</p>	<p><b>Multi-Fruits and Flowers sheets</b> Amethyst 300 (18), 450 (14) Green 500 (12), 275 (14)</p> <p><b>Nautilus, Northwood/Dugan</b></p> <p><b>The Nautilus pattern produced the Carnival era and has been called Argonaut Shell. Northwood produced an extensive line in cut and opalescent glass—some motifs have the early "Northwood" in script. The molds were transferred to Dugan who produced the few limited shapes in carnival. Apparently Dugan did not immediately remove the mark, so some pieces are found with the Northwood script.</b></p> <p><b>Creamer/gravy</b> Peach top 25, 35, 100 (12), 35 (14) Peach top, snow, Lisbon NY 55 (03) Purple 85 (12), 35, 40, 50 (14)</p> <p><b>Sugar bowls</b> Peach top 85, 150 (13), 115 (04) Purple 115 (13), 85, 80, 125 (14)</p> <p><b>Wine, see New Year action</b></p> <p><b>Near Cut, Cambridge</b></p> <p><b>Found in creamers and mugs of a similar design, usually with oyster or lotus pattern.</b></p> <p><b>Creamer</b> Margarit, West, Minn., 175 (02) Green 100, 160, 225, 275 (14) Margarit, Sandstone, Minn., 75 (05)</p> <p><b>Mugs</b> Margarit 55 (03) Margarit, Greenville, Minn., 30 (11) Margarit, Baldwin, Wis., 75 (02)</p> <p><b>Tomblers</b> Margarit, Good Thunders, Minn., 55 (11) Margarit, Hamilton, Ont., 35 (14) Purple 800 (18)</p>	<p><b>Near Cut, Northwood</b></p> <p><b>As a scarce pattern, known in this globe and water set pieces. The height of goblet is 6 inches.</b></p> <p><b>Goblets</b> Margarit 150 (07), 350 (14) Purple 90 (08), 50, 85 (07)</p> <p><b>Pickers</b> Margarit 190 (01), 110 (14)</p> <p><b>Tomblers</b> Margarit 450 (13), 140 (14) Purple 800 (13), 500 (11)</p> <p><b>Nesting Swan, Millersburg</b></p> <p><b>Millersburg's swan pattern is found in the usual Millersburg colors, although rare blue and ruffled are known. The back pattern is called Diamond and Fan and is visible through the above bowl.</b></p> <p><b>Bowls, mostly ruffled or 27 edge</b> Amethyst 175, 200, 400, 575 (14) Amethyst, known 5,200 (10)</p> <p><b>Amethyst, round flared, 850 (10)</b> 3,200 (09)</p> <p><b>Amethyst, blue ind., 4,000 (07)</b> Blue, ice cream shape, 3,500 (09) Green 100, 160, 225, 275 (14) Green, super 500 (12), 2,100 (14) Green, emerald 1,000 (05) Green, vapor or diamond shape 1,000 (12), 675 (14) Green, ice cream shape, 400 (08), 55 (10) Margarit, ruffled 115, 110, 112, 275 (14) Margarit, proof (see came from mold) 200 (08)</p> <p><b>Tomblers</b> Margarit, Good Thunders, Minn., 55 (11) Margarit, Hamilton, Ont., 35 (14) Purple 800 (18)</p>	<p><b>Margarit, light crimp, 425 (03)</b> Margarit, cream, blue ind., 3,700 (02) Vaseline 725 (08), 800 (12)</p> <p><b>Chop plate, 10 inch, 1 known</b> Green 6,000 (01)</p> <p><b>Rosebells</b> Margarit 3,100, 3,500 (09)</p> <p><b>Spittoon known</b></p> <p><b>Night Stars, Millersburg</b></p> <p><b>In very shape, Night Stars is hard to find and most are damaged. Almost all known examples are the two-handled bottle shape shown above, though there are a few single-handled napkins.</b></p> <p><b>Basins</b> Amethyst 590 (12), 550 (12) Green 650 (11), 600 (14) Margarit 575 (12), 600 (14) Olive green 275, 290, 370, 675 (11)</p> <p><b>Heavy spade shape</b> Amethyst 3,700 (01)</p> <p><b>Nippon, Northwood</b></p> <p><b>Don't mistake Northwood's Nippon for Farnes's Peacock. Dr. Nippon has a circular design in the center like the Imperial Crest of the Empress of Japan. With the Peacock's tail pattern the design continues into the center. Bowls may have other a basaltine back or the ribbed back, although a few with plain backs have also been reported.</b></p> <p><b>Plates, 9 inches</b> Amethyst/purple 450, 550 (12), 300 (14) Green 525, 625 (13), 575 (14) Ice blue, one known, 8,000 (07) Ice green, only known, 12,000 (01) Margarit 475 (12), 200, 600 (11) White 11,000 (06)</p>

Designed to be handy to use, the Field Guide is 6 x 9 inches. Within its 200 pages are listings for Carnival Glass patterns along with a photo of each pattern, a brief description, shapes found in each pattern, and prices for each shape in the colors available. Price reports are based on auction sales from the past 15 years with emphasis on the most recent years, up to and including some of 2015. This edition has 29,000 individual prices and 1,200 photographs.

- Table of Contents**  
 Classic patterns, A-Z  
 Lettered carnival  
 Vases  
 Novelties and miniatures  
 Decorated carnival  
 Lamps and shades  
 Hatpins  
 Spectacular Carnival sold at auction

**Ordering information**  
 The 2015 Field Guide may be ordered from:  
[Heart of America Carnival Glass Association](http://www.HeartofAmericaCarnivalGlassAssociation.com)

The price is \$20 for individual US shipments.

## CARNIVAL GLASS SHOWCASE

Where collectors gather to strut their stuff and tell their stories.

We have a passion! Join in on the fun!  
 Sign up for our Newsletter and be sure to tell a friend!

www.CarnivalGlassShowcase.com